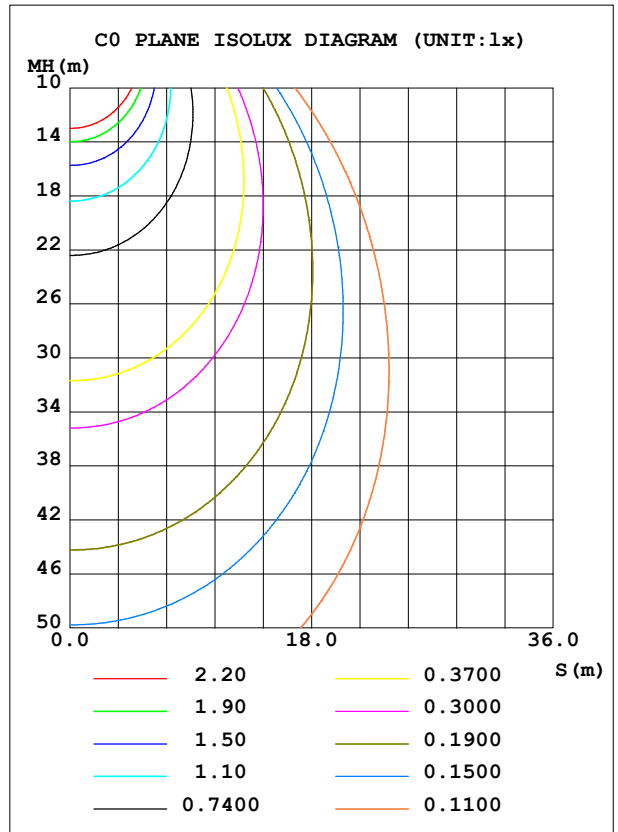
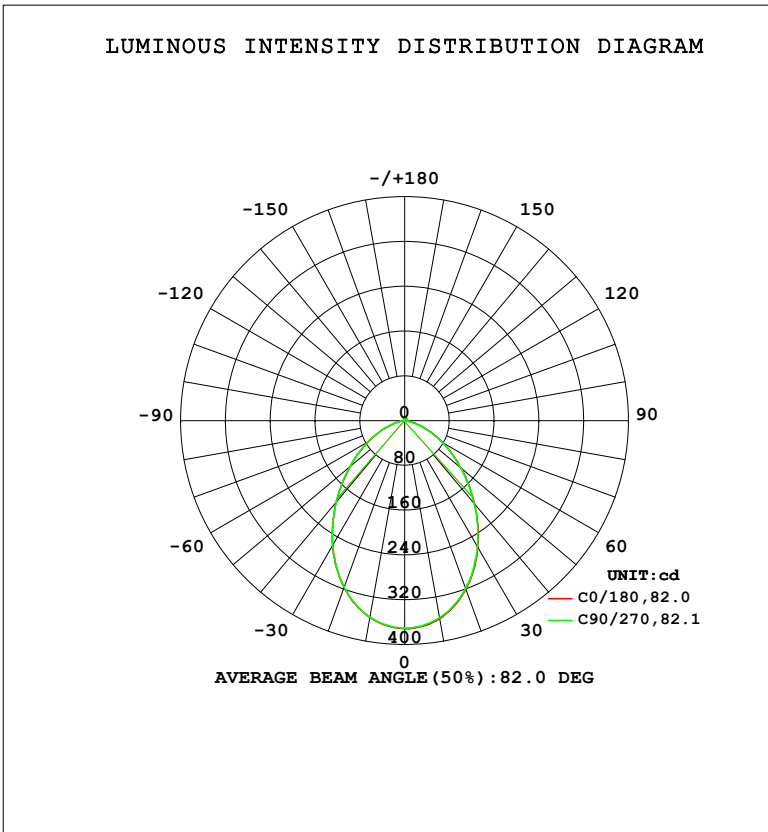


LUMINAIRE PHOTOMETRIC TEST REPORT

Test:U:230.27V I:0.0365A P:7.6898W PF:0.9145 Freq:0Hz		
Lamp Flux:706.743x1 lm		
NAME: R771 XB34A (3000K)	TYPE:	WEIGHT:
SPEC.:	DIM.:	SERIAL No.:
MFR.: EVERFINE	SUR.:	Shielding Angle:

DATA OF LAMP		PHOTOMETRIC DATA			
MODEL		Imax (cd)	371.5	S/MH (C0/180)	1.07
NOMINAL POWER (W)	8	LOR (%)	100.0	S/MH (C90/270)	1.07
RATED VOLTAGE (V)	230	TOTAL FLUX (lm)	706.74	η UP, DN (C0-180)	0.9,49.6
NOMINAL FLUX (lm)	706.743	CIE CLASS	DIRECT	η UP, DN (C180-360)	0.9,48.7
LAMPS INSIDE	1	η up (%)	1.8	CIBSE SHR NOM	1.00
TEST VOLTAGE (V)	230	η down (%)	98.2	CIBSE SHR MAX	1.15



C Range: 0 - 360DEG
 C Interval: 22.5DEG
 Test Speed: HIGH
 Temperature:25.3°C
 Operators:DAMIN
 Test Date:2024-02-05

γ Range: 0 - 180DEG
 γ Interval: 1.0DEG
 Test System:EVERFINE GO-2000A_V1 SYSTEM V2.00.471
 Humidity:65.0%
 Test Distance:12.020m [K=1.0000]
 Remarks:

ZONAL FLUX DIAGRAM

ZONAL FLUX DIAGRAM:

γ	C0	C45	C90	C135	C180	C225	C270	C315	γ	Φ zone	Φ total	%lum,lamp
10	359.1	358.4	357.8	356.8	357.2	356.8	356.6	356.7	0- 10	34.74	34.74	4.92,4.92
20	320.1	319.6	318.7	317.7	317.0	316.5	316.4	317.0	10- 20	95.64	130.4	18.4,18.4
30	261.6	261.2	260.3	259.3	257.6	257.2	257.4	258.1	20- 30	133.2	263.6	37.3,37.3
40	194.6	194.4	193.7	192.7	190.4	190.0	190.5	191.4	30- 40	140.9	404.5	57.2,57.2
50	131.2	131.0	130.4	129.5	127.3	127.0	127.7	128.5	40- 50	123.2	527.7	74.7,74.7
60	78.01	77.87	77.37	76.66	74.76	74.66	75.32	76.08	50- 60	90.82	618.5	87.5,87.5
70	36.36	36.17	35.70	35.14	33.65	33.67	34.29	34.97	60- 70	54.03	672.5	95.2,95.2
80	7.237	6.588	6.904	6.104	5.711	5.429	6.118	5.859	70- 80	20.29	692.8	98,98
90	0.3001	0.2907	0.3001	0.2907	0.2817	0.2817	0.2814	0.2722	80- 90	1.546	694.3	98.2,98.2
100	0.5344	0.5433	0.5436	0.5624	0.5910	0.5911	0.5820	0.5821	90-100	0.4351	694.8	98.3,98.3
110	1.031	1.032	1.022	1.050	1.042	1.042	1.042	1.022	100-110	0.8298	695.6	98.4,98.4
120	1.641	1.641	1.650	1.660	1.670	1.661	1.661	1.624	110-120	1.320	696.9	98.6,98.6
130	2.382	2.373	2.382	2.382	2.373	2.364	2.355	2.335	120-130	1.789	698.7	98.9,98.9
140	3.141	3.141	3.132	3.142	3.133	3.124	3.105	3.087	130-140	2.117	700.8	99.2,99.2
150	3.864	3.826	3.845	3.863	3.864	3.846	3.818	3.790	140-150	2.179	703.0	99.5,99.5
160	4.483	4.464	4.472	4.473	4.492	4.465	4.455	4.436	150-160	1.914	704.9	99.7,99.7
170	4.942	4.942	4.942	4.924	4.999	4.962	4.981	4.952	160-170	1.331	706.3	99.9,99.9
180	5.140	5.177	5.215	5.121	5.168	5.177	5.215	5.130	170-180	0.4827	706.7	100,100
DEG	LUMINOUS INTENSITY:cd									UNIT:lm		

Conical surface Flux(90deg): 469.49 lm

%lum = 66.4%

%lamp = 66.4%

Conical surface Flux(120deg): 618.48 lm

%lum = 87.5%

%lamp = 87.5%

0 - 45 DEG Zonal Flux:469.49 %lum: 66.4%

0 - 60 DEG Zonal Flux:618.48 %lum: 87.5%

All measured values may vary less than 35 %

from the average measured value in the 0 to 130 deg. zone: 11.5%

All measured values in the 0 to 130 deg. zone

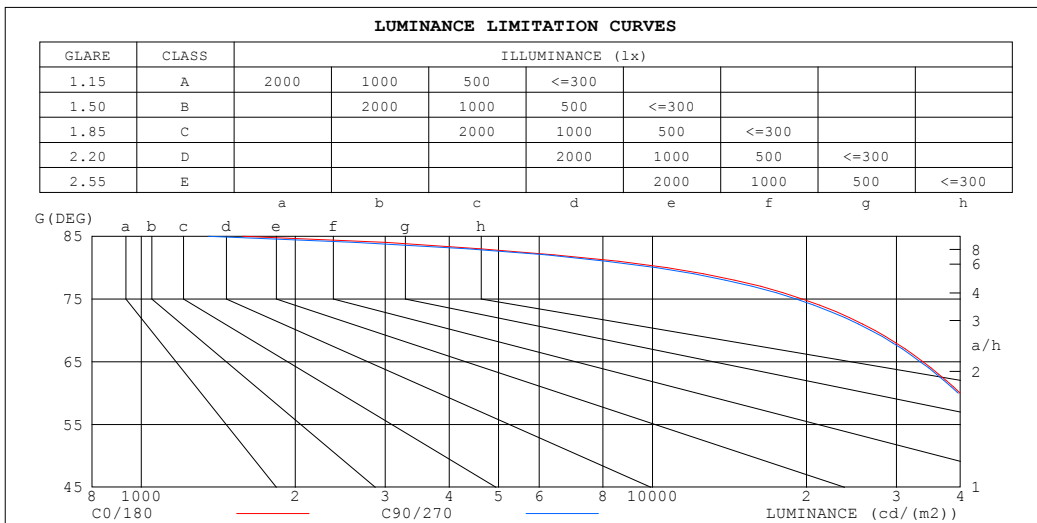
may vary less than 50% from the average value of itself: 16.6%

C Range: 0 - 360DEG
 C Interval: 22.5DEG
 Test Speed: HIGH
 Temperature:25.3°C
 Operators:DAMIN
 Test Date:2024-02-05

γ Range: 0 - 180DEG
 γ Interval: 1.0DEG
 Test System:EVERFINE GO-2000A_V1 SYSTEM V2.00.471
 Humidity:65.0%
 Test Distance:12.020m [K=1.0000]
 Remarks:

LUMINANCE LIMITATION CURVES

Test:U:230.27V I:0.0365A P:7.6898W PF:0.9145 Freq:0Hz		
Lamp Flux:706.743x1 lm		
NAME: R771 XB34A (3000K)	TYPE:	WEIGHT:
SPEC.:	DIM.:	SERIAL No.:
MFR.: EVERFINE	SUR.:	Shielding Angle:



LUMINANCE cd/ (m2)		
G (DEG)	C0/180	C90/270
85	1579	1353
80	10677	10185
75	19642	19107
70	27235	26736
65	33815	33398
60	39968	39638
55	46078	45735
50	52292	51986
45	58642	58339

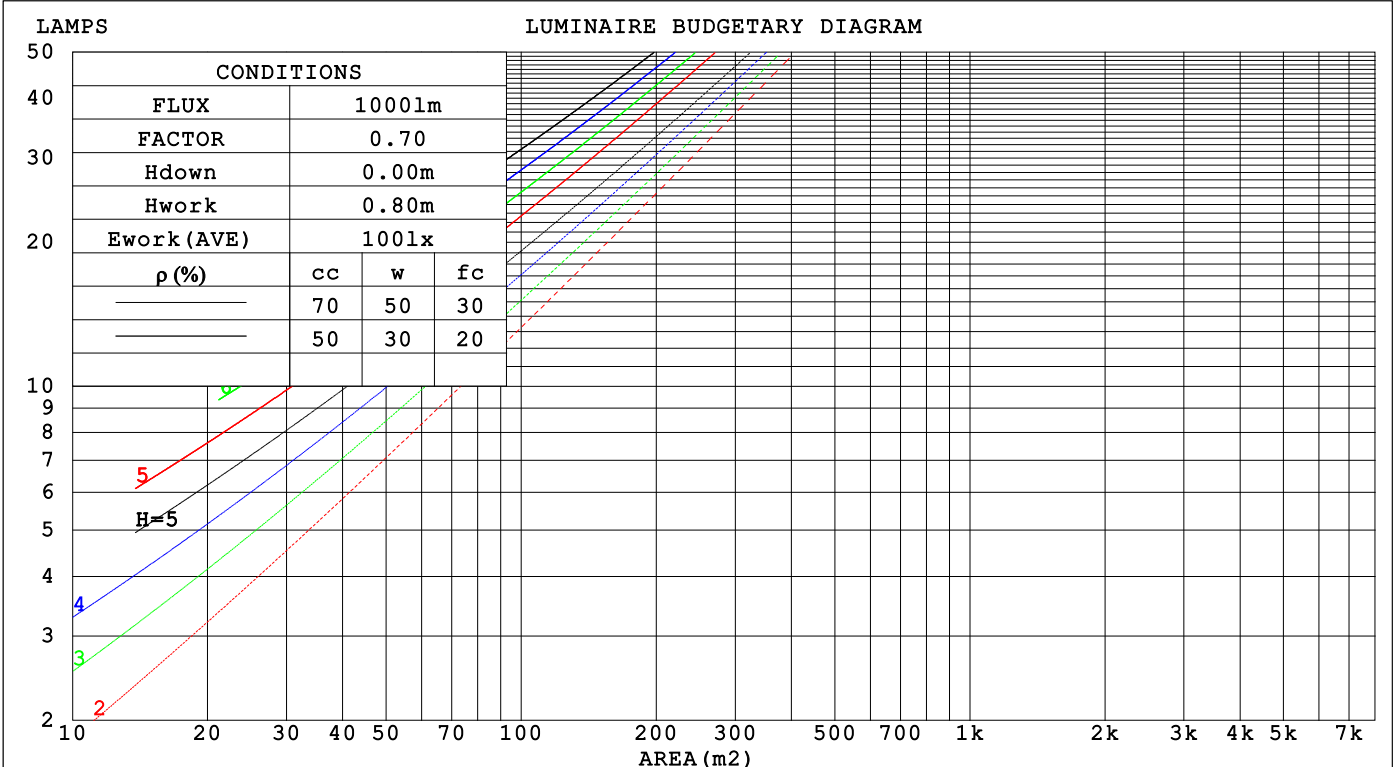
C Range: 0 - 360DEG
 C Interval: 22.5DEG
 Test Speed: HIGH
 Temperature:25.3°C
 Operators:DAMIN
 Test Date:2024-02-05

γ Range: 0 - 180DEG
 γ Interval: 1.0DEG
 Test System:EVERFINE GO-2000A_V1 SYSTEM V2.00.471
 Humidity:65.0%
 Test Distance:12.020m [K=1.0000]
 Remarks:

CU AND LUMINAIRE BUDGETARY ESTIMATE DIAGRAM

Test:U:230.27V I:0.0365A P:7.6898W PF:0.9145 Freq:0Hz		
Lamp Flux:706.743x1 lm		
NAME: R771 XB34A (3000K)	TYPE:	WEIGHT:
SPEC.:	DIM.:	SERIAL No.:
MFR.: EVERFINE	SUR.:	Shielding Angle:

ρcc	80%			70%			50%			30%			10%			0
ρw	50%	30%	10%	50%	30%	10%	50%	30%	10%	50%	30%	10%	50%	30%	10%	0
ρfc	20%			20%			20%			20%			20%			0
RCR	RCR:Room Cavity Ratio															
	Coefficients of Utilization(CU)															
0.0	1.19	1.19	1.19	1.16	1.16	1.16	1.10	1.10	1.10	1.05	1.05	1.05	1.00	1.00	1.00	.98
1.0	1.07	1.03	.00	1.04	1.01	.98	.00	.97	.95	.96	.93	.92	.92	.90	.89	.86
2.0	.95	.89	.84	.93	.88	.83	.89	.85	.81	.86	.82	.79	.83	.80	.77	.75
3.0	.85	.78	.72	.83	.77	.72	.80	.75	.70	.77	.73	.69	.75	.71	.67	.65
4.0	.76	.69	.63	.75	.68	.62	.72	.66	.61	.70	.65	.60	.68	.63	.59	.57
5.0	.69	.61	.55	.68	.61	.55	.66	.59	.54	.64	.58	.54	.62	.57	.53	.51
6.0	.63	.55	.49	.62	.54	.49	.60	.53	.48	.58	.52	.48	.57	.51	.47	.45
7.0	.58	.50	.44	.57	.49	.44	.55	.48	.43	.54	.48	.43	.52	.47	.43	.41
8.0	.53	.45	.40	.52	.45	.40	.51	.44	.39	.50	.44	.39	.48	.43	.39	.37
9.0	.49	.41	.36	.48	.41	.36	.47	.41	.36	.46	.40	.36	.45	.39	.35	.34
10.0	.45	.38	.33	.45	.38	.33	.44	.37	.33	.43	.37	.33	.42	.36	.33	.31



C Range: 0 - 360DEG
 C Interval: 22.5DEG
 Test Speed: HIGH
 Temperature:25.3°C
 Operators:DAMIN
 Test Date:2024-02-05

γ Range: 0 - 180DEG
 γ Interval: 1.0DEG
 Test System:EVERFINE GO-2000A_V1 SYSTEM V2.00.471
 Humidity:65.0%
 Test Distance:12.020m [K=1.0000]
 Remarks:

WEC AND CCEC

Test:U:230.27V I:0.0365A P:7.6898W PF:0.9145 Freq:0Hz		
Lamp Flux:706.743x1 lm		
NAME: R771 XB34A (3000K)	TYPE:	WEIGHT:
SPEC.:	DIM.:	SERIAL No.:
MFR.: EVERFINE	SUR.:	Shielding Angle:

ρ_{CC}	80%			70%			50%			30%			10%			0
ρ_w	50%	30%	10%	50%	30%	10%	50%	30%	10%	50%	30%	10%	50%	30%	10%	0
ρ_{fc}	20%			20%			20%			20%			20%			0
RCR	RCR:Room Cavity Ratio						Wall Exitance Coefficients (WEC)									
0.0																
1.0	.251	.143	.045	.244	.139	.044	.230	.132	.042	.217	.125	.040	.205	.119	.038	
2.0	.244	.134	.041	.238	.131	.040	.225	.125	.039	.214	.120	.038	.204	.115	.036	
3.0	.231	.123	.037	.225	.121	.036	.215	.116	.035	.205	.112	.034	.196	.108	.033	
4.0	.217	.113	.033	.212	.111	.033	.203	.107	.032	.194	.104	.031	.186	.101	.031	
5.0	.204	.104	.030	.199	.102	.030	.191	.099	.029	.183	.096	.029	.175	.094	.028	
6.0	.191	.096	.027	.187	.095	.027	.180	.092	.027	.173	.090	.026	.166	.087	.026	
7.0	.180	.089	.025	.176	.088	.025	.169	.086	.025	.163	.084	.024	.157	.082	.024	
8.0	.169	.083	.023	.166	.082	.023	.160	.080	.023	.154	.078	.023	.149	.076	.022	
9.0	.160	.077	.022	.157	.076	.021	.151	.075	.021	.146	.073	.021	.141	.072	.021	
10.0	.151	.072	.020	.149	.072	.020	.144	.070	.020	.139	.069	.020	.134	.068	.019	

ρ_{CC}	80%			70%			50%			30%			10%			0
ρ_w	50%	30%	10%	50%	30%	10%	50%	30%	10%	50%	30%	10%	50%	30%	10%	0
ρ_{fc}	20%			20%			20%			20%			20%			0
RCR	RCR:Room Cavity Ratio						Ceiling Cavity Exitance Coefficients (CCEC)									
0.0	.204	.204	.204	.174	.174	.174	.119	.119	.119	.068	.068	.068	.022	.022	.022	
1.0	.190	.170	.152	.162	.146	.131	.111	.100	.091	.064	.058	.053	.020	.019	.017	
2.0	.179	.146	.117	.154	.125	.101	.105	.087	.071	.061	.050	.041	.019	.016	.014	
3.0	.171	.128	.093	.146	.110	.081	.100	.077	.057	.058	.045	.033	.019	.015	.011	
4.0	.163	.114	.077	.140	.098	.067	.096	.069	.047	.056	.040	.028	.018	.013	.009	
5.0	.155	.103	.065	.133	.089	.056	.092	.062	.040	.053	.037	.024	.017	.012	.008	
6.0	.148	.095	.056	.128	.082	.049	.088	.057	.035	.051	.034	.021	.016	.011	.007	
7.0	.142	.088	.050	.122	.076	.043	.084	.053	.031	.049	.031	.018	.016	.010	.006	
8.0	.136	.082	.045	.117	.071	.039	.081	.050	.028	.047	.029	.016	.015	.010	.005	
9.0	.130	.077	.041	.112	.067	.036	.078	.047	.025	.045	.028	.015	.015	.009	.005	
10.0	.125	.073	.038	.108	.063	.033	.075	.044	.023	.044	.026	.014	.014	.009	.005	

C Range: 0 - 360DEG
 C Interval: 22.5DEG
 Test Speed: HIGH
 Temperature:25.3°C
 Operators:DAMIN
 Test Date:2024-02-05

γ Range: 0 - 180DEG
 γ Interval: 1.0DEG
 Test System:EVERFINE GO-2000A_V1 SYSTEM V2.00.471
 Humidity:65.0%
 Test Distance:12.020m [K=1.0000]
 Remarks:

UGR(Unified Glare Rating) Table

Test:U:230.27V I:0.0365A P:7.6898W PF:0.9145 Freq:0Hz										
Lamp Flux:706.743x1 lm										
NAME: R771 XB34A (3000K)					TYPE:			WEIGHT:		
SPEC.:					DIM.:			SERIAL No.:		
MFR.: EVERFINE					SUR.:			Shielding Angle:		
ceiling/cavity	0.7	0.7	0.5	0.5	0.3	0.7	0.7	0.5	0.5	0.3
walls	0.5	0.3	0.5	0.3	0.3	0.5	0.3	0.5	0.3	0.3
working plane	0.2	0.2	0.2	0.2	0.2	0.2	0.2	0.2	0.2	0.2
Room dimensions	Viewed crosswise					Viewed endwise				
x = 2H y = 2H	25.6	26.9	25.8	27.1	27.3	25.5	26.9	25.8	27.1	27.3
3H	26.3	27.5	26.6	27.8	28.0	26.3	27.5	26.6	27.7	28.0
4H	26.5	27.6	26.8	27.9	28.2	26.4	27.6	26.8	27.9	28.1
6H	26.5	27.6	26.8	27.9	28.2	26.4	27.5	26.8	27.8	28.1
8H	26.5	27.5	26.8	27.8	28.1	26.4	27.4	26.8	27.7	28.1
12H	26.4	27.4	26.8	27.7	28.1	26.4	27.3	26.7	27.7	28.0
4H 2H	25.9	27.0	26.2	27.3	27.6	25.9	27.0	26.2	27.3	27.6
3H	26.8	27.8	27.2	28.1	28.4	26.7	27.7	27.1	28.1	28.4
4H	27.0	27.9	27.4	28.3	28.6	27.0	27.9	27.4	28.2	28.6
6H	27.1	27.9	27.5	28.2	28.6	27.0	27.8	27.5	28.2	28.6
8H	27.0	27.8	27.5	28.2	28.6	27.0	27.7	27.4	28.1	28.5
12H	27.0	27.7	27.4	28.1	28.5	27.0	27.6	27.4	28.0	28.5
8H 4H	27.0	27.8	27.5	28.2	28.6	27.0	27.7	27.4	28.1	28.5
6H	27.1	27.7	27.6	28.2	28.6	27.1	27.7	27.6	28.1	28.6
8H	27.1	27.6	27.6	28.1	28.6	27.1	27.6	27.6	28.1	28.5
12H	27.1	27.5	27.6	28.0	28.5	27.0	27.5	27.5	28.0	28.5
12H 4H	27.0	27.7	27.5	28.1	28.5	27.0	27.6	27.4	28.0	28.5
6H	27.1	27.6	27.6	28.1	28.6	27.1	27.6	27.5	28.0	28.5
8H	27.1	27.5	27.6	28.0	28.5	27.0	27.5	27.5	28.0	28.5
Variations with the observer position at spacings(CIE Pub.117):										
S = 1.0H	+ 0.4 / - 0.6					+ 0.5 / - 0.6				
1.5H	+ 0.2 / - 0.2					+ 0.2 / - 0.3				
2.0H	+ 0.7 / - 0.8					+ 0.7 / - 0.8				

CIE Pub.117, 706.7 lm Total Lamp Luminous Flux Corrected (8log(F/F0) = -1.2)
 Area: 0.0039036 m2

C Range: 0 - 360DEG
 C Interval: 22.5DEG
 Test Speed: HIGH
 Temperature:25.3°C
 Operators:DAMIN
 Test Date:2024-02-05

γ Range: 0 - 180DEG
 γ Interval: 1.0DEG
 Test System:EVERFINE GO-2000A_V1 SYSTEM V2.00.471
 Humidity:65.0%
 Test Distance:12.020m [K=1.0000]
 Remarks:

UTILIZATION FACTORS TABLE

Test:U:230.27V I:0.0365A P:7.6898W PF:0.9145 Freq:0Hz Lamp Flux:706.743x1 lm		
NAME: R771 XB34A (3000K)	TYPE:	WEIGHT:
SPEC.:	DIM.:	SERIAL No.:
MFR.: EVERFINE	SUR.:	Shielding Angle:

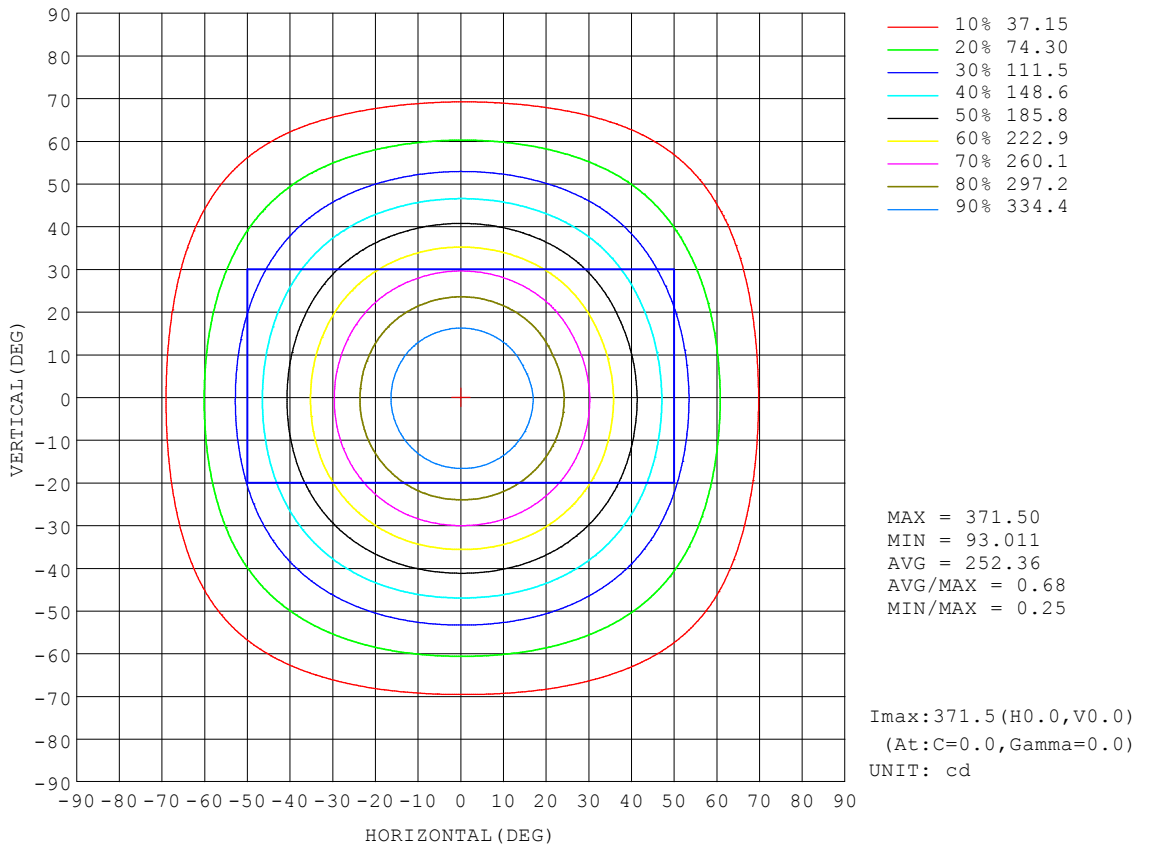
REFLECTANCE										
Ceiling	0.8	0.8	0.8	0.7	0.7	0.7	0.5	0.5	0.5	0
Walls	0.7	0.5	0.3	0.7	0.5	0.3	0.7	0.5	0.3	0
Working plane	0.2	0.2	0.2	0.2	0.2	0.2	0.2	0.2	0.2	0
ROOM INDEX	UTILIZATION FACTORS (PERCENT) $k(RI) \times RCR = 5$									
k = 0.60	65	54	48	64	54	48	63	54	48	42
0.80	75	65	58	74	64	58	72	63	58	51
1.00	83	73	67	81	73	67	79	73	66	60
1.25	89	80	74	88	80	74	85	78	73	66
1.50	94	85	80	92	85	79	89	83	78	71
2.00	99	92	87	98	91	86	94	89	85	77
2.50	103	96	91	101	95	90	97	92	88	80
3.00	105	100	95	103	98	94	99	95	92	84
4.00	109	104	100	106	102	99	102	99	96	87
5.00	111	107	103	108	105	102	103	101	98	89
ROOM INDEX	UF(total)									Direct
According to DIN EN 13032-2 2004			Suspended				SHRNOM = 1.25			

C Range: 0 - 360DEG
 C Interval: 22.5DEG
 Test Speed: HIGH
 Temperature:25.3°C
 Operators:DAMIN
 Test Date:2024-02-05

γ Range: 0 - 180DEG
 γ Interval: 1.0DEG
 Test System:EVERFINE GO-2000A_V1 SYSTEM V2.00.471
 Humidity:65.0%
 Test Distance:12.020m [K=1.0000]
 Remarks:

ISOCANDELA DIAGRAM

Test:U:230.27V I:0.0365A P:7.6898W PF:0.9145 Freq:0Hz Lamp Flux:706.743x1 lm		
NAME: R771 XB34A (3000K)	TYPE:	WEIGHT:
SPEC.:	DIM.:	SERIAL No.:
MFR.: EVERFINE	SUR.:	Shielding Angle:

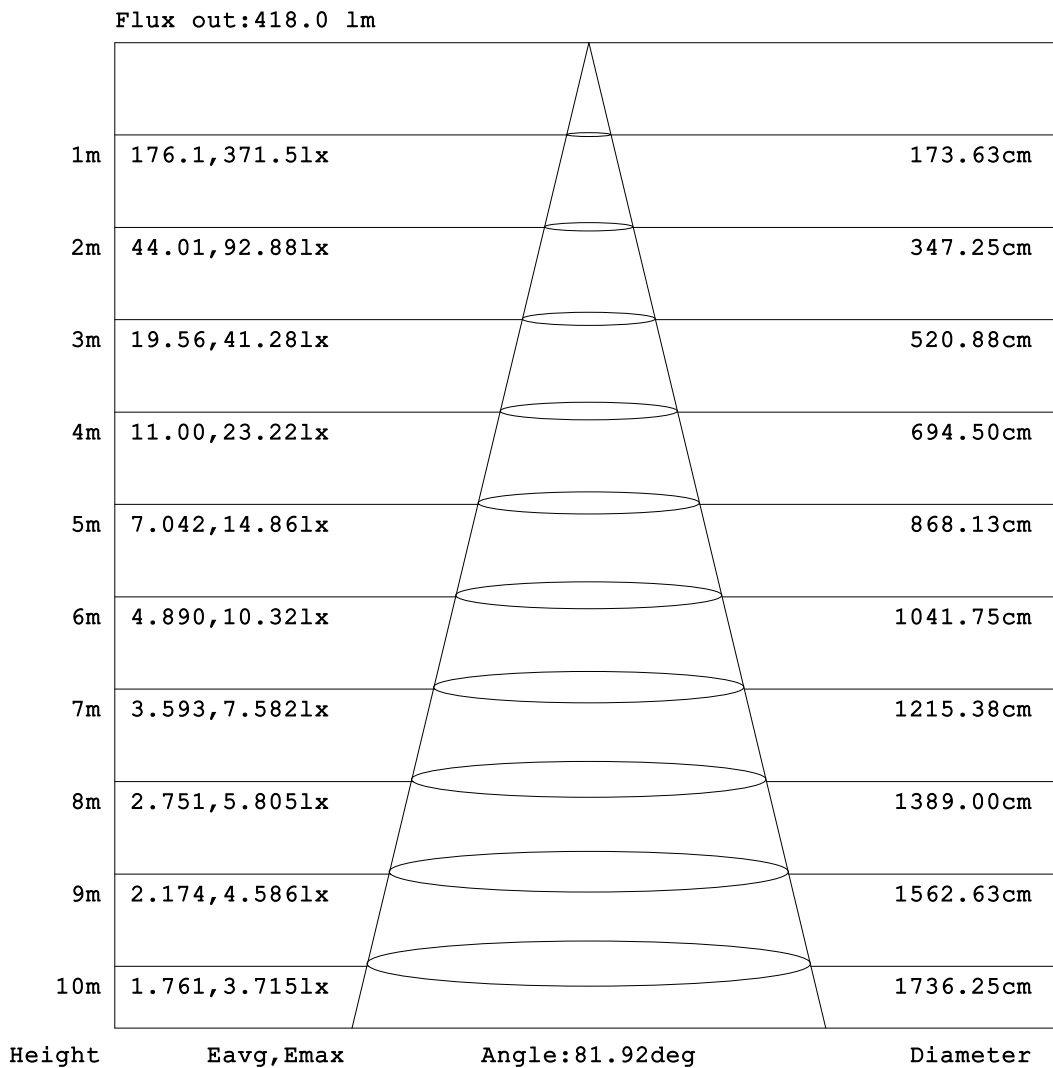


C Range: 0 - 360DEG
 C Interval: 22.5DEG
 Test Speed: HIGH
 Temperature:25.3°C
 Operators:DAMIN
 Test Date:2024-02-05

γ Range: 0 - 180DEG
 γ Interval: 1.0DEG
 Test System:EVERFINE GO-2000A_V1 SYSTEM V2.00.471
 Humidity:65.0%
 Test Distance:12.020m [K=1.0000]
 Remarks:

AAI Figure

Test:U:230.27V I:0.0365A P:7.6898W PF:0.9145 Freq:0Hz Lamp Flux:706.743x1 lm		
NAME: R771 XB34A (3000K)	TYPE:	WEIGHT:
SPEC.:	DIM.:	SERIAL No.:
MFR.: EVERFINE	SUR.:	Shielding Angle:



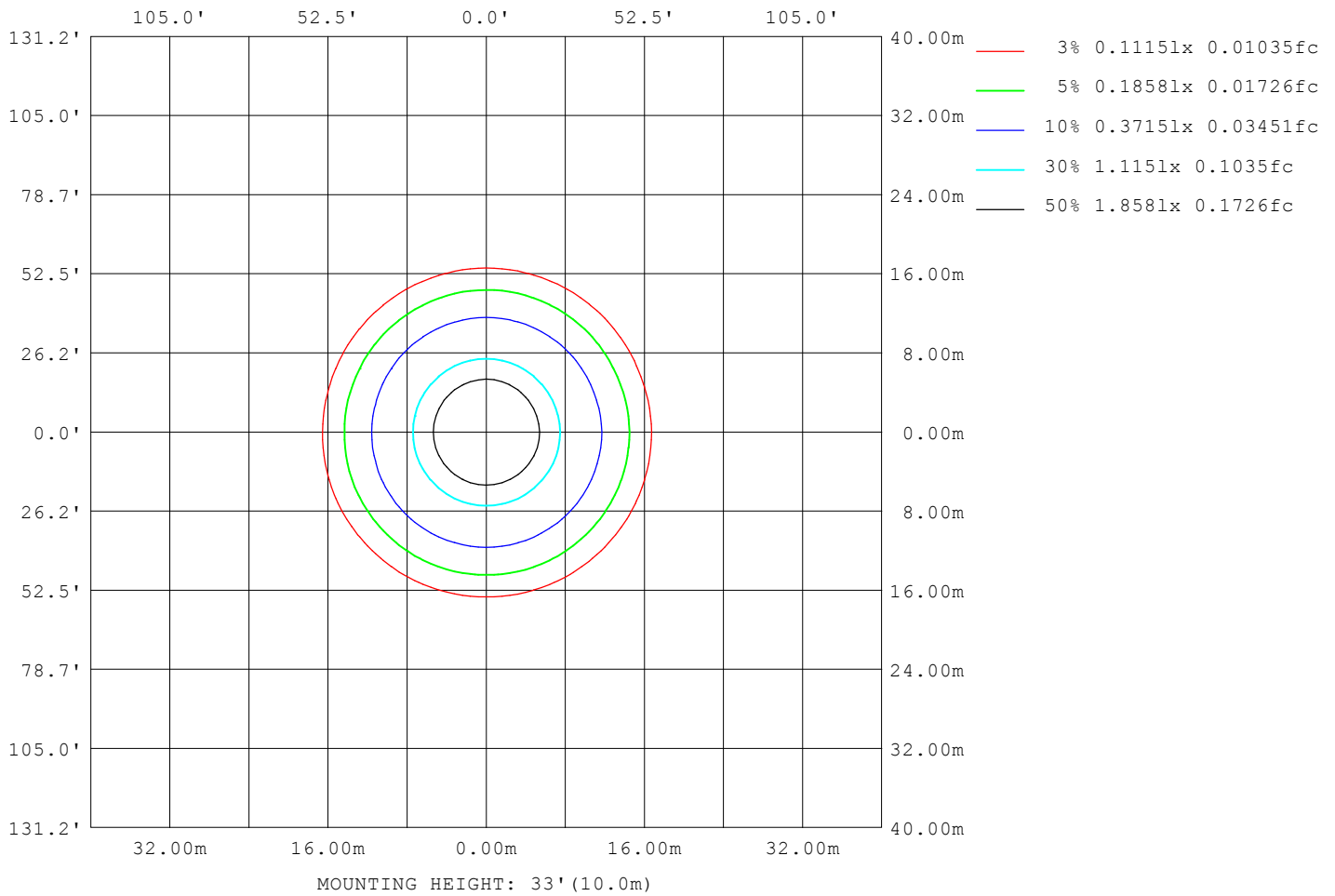
Note:The Curves indicate the illuminated area and the average illumination when the luminaire is at different distance.

C Range: 0 - 360DEG
C Interval: 22.5DEG
Test Speed: HIGH
Temperature:25.3°C
Operators:DAMIN
Test Date:2024-02-05

γ Range: 0 - 180DEG
γ Interval: 1.0DEG
Test System:EVERFINE GO-2000A_V1 SYSTEM V2.00.471
Humidity:65.0%
Test Distance:12.020m [K=1.0000]
Remarks:

ISOLUX DIAGRAM

Test:U:230.27V I:0.0365A P:7.6898W PF:0.9145 Freq:0Hz Lamp Flux:706.743x1 lm		
NAME: R771 XB34A (3000K)	TYPE:	WEIGHT:
SPEC.:	DIM.:	SERIAL No.:
MFR.: EVERFINE	SUR.:	Shielding Angle:



C Range: 0 - 360DEG
 C Interval: 22.5DEG
 Test Speed: HIGH
 Temperature:25.3°C
 Operators:DAMIN
 Test Date:2024-02-05

γ Range: 0 - 180DEG
 γ Interval: 1.0DEG
 Test System:EVERFINE GO-2000A_V1 SYSTEM V2.00.471
 Humidity:65.0%
 Test Distance:12.020m [K=1.0000]
 Remarks:

LED Avg.L Report

Test:U:230.27V I:0.0365A P:7.6898W PF:0.9145 Freq:0Hz		
Lamp Flux:706.743x1 lm		
NAME: R771 XB34A (3000K)	TYPE:	WEIGHT:
SPEC.:	DIM.:	SERIAL No.:
MFR.: EVERFINE	SUR.:	Shielding Angle:

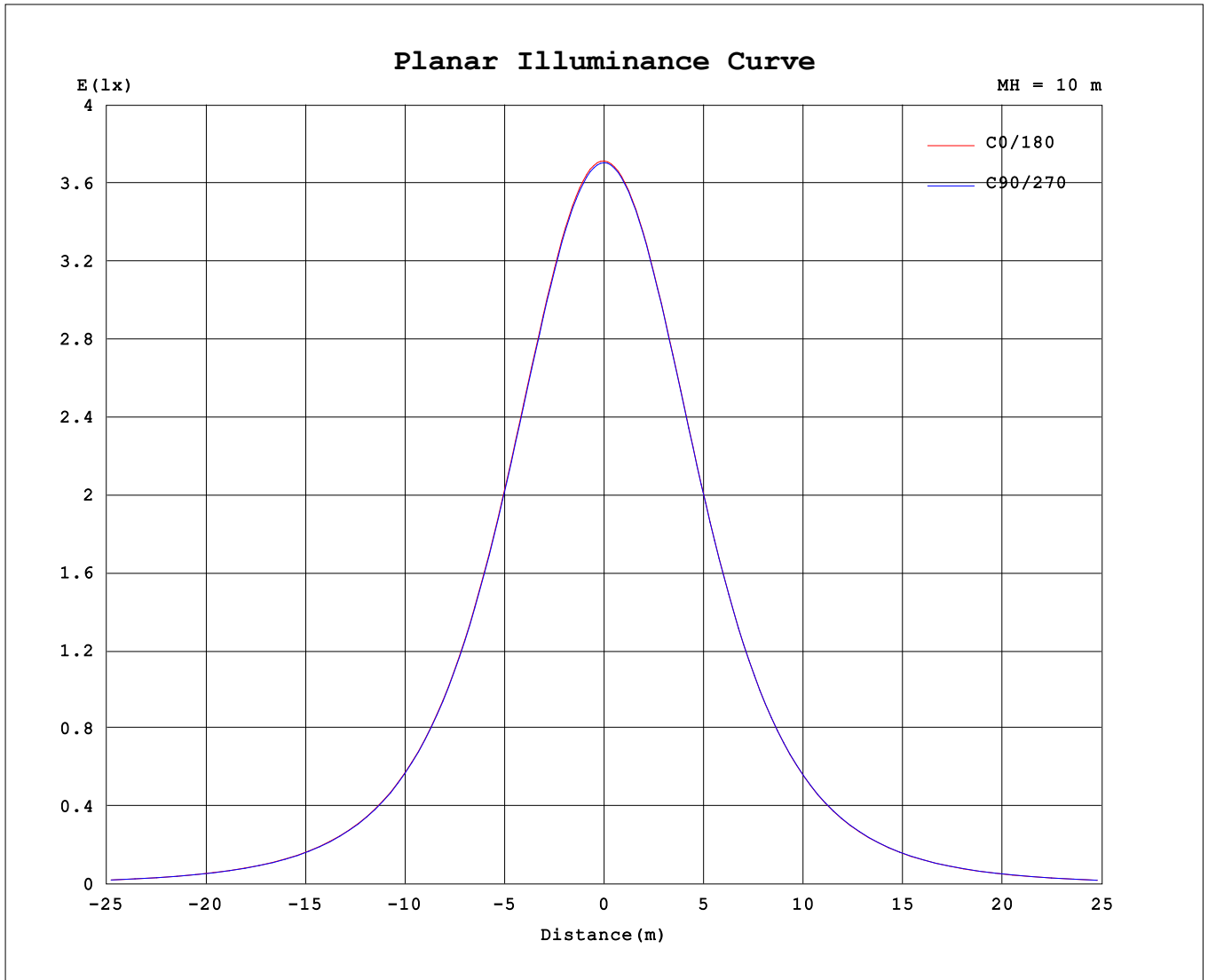
AvgL	cd/m2
L_0~180 (65) av	32890
L_0~180 (75) av	18529
L_0~180 (85) av	1162
L_90~270 (65) av	32864
L_90~270 (75) av	18525
L_90~270 (85) av	1117
L_45 (65) av	32856
L_45 (75) av	18482
L_45 (85) av	1013

Standard: GB/T 29293-2012

C Range: 0 - 360DEG
 C Interval: 22.5DEG
 Test Speed: HIGH
 Temperature:25.3℃
 Operators:DAMIN
 Test Date:2024-02-05

γ Range: 0 - 180DEG
 γ Interval: 1.0DEG
 Test System:EVERFINE GO-2000A_V1 SYSTEM V2.00.471
 Humidity:65.0%
 Test Distance:12.020m [K=1.0000]
 Remarks:

Planar Illuminance Curve



C Range: 0 - 360DEG
 C Interval: 22.5DEG
 Test Speed: HIGH
 Temperature: 25.3°C
 Operators: DAMIN
 Test Date: 2024-02-05

γ Range: 0 - 180DEG
 γ Interval: 1.0DEG
 Test System: EVERFINE GO-2000A_V1 SYSTEM V2.00.471
 Humidity: 65.0%
 Test Distance: 12.020m [K=1.0000]
 Remarks:

LUMINOUS DISTRIBUTION INTENSITY DATA

Test:U:230.27V I:0.0365A P:7.6898W PF:0.9145 Freq:0Hz		
Lamp Flux:706.743x1 lm		
NAME: R771 XB34A (3000K)	TYPE:	WEIGHT:
SPEC.:	DIM.:	SERIAL No.:
MFR.: EVERFINE	SUR.:	Shielding Angle:

Table--1

UNIT: cd

C (DEG) \ γ (DEG)	0	22.5	45	67.5	90	112.5	135	157.5	180	202.5	225	247.5	270	292.5	315	337.5			
0	372	371	371	371	371	370	370	370	372	371	371	371	371	370	370	370			
5	369	369	368	368	367	367	367	366	368	367	367	367	367	367	367	367			
10	359	359	358	358	358	357	357	357	357	357	357	357	357	357	357	357			
15	343	343	342	342	341	341	340	340	340	339	340	339	339	339	340	340			
20	320	320	320	319	319	318	318	317	317	316	316	316	316	316	317	317			
25	293	293	292	292	291	291	290	290	289	288	289	288	289	289	289	289			
30	262	262	261	261	260	260	259	259	258	257	257	257	257	257	257	258			
35	228	229	228	228	227	227	226	226	224	223	224	224	224	224	225	225			
40	195	195	194	194	194	194	193	192	190	190	190	190	191	191	191	191			
45	162	162	162	162	161	161	160	160	158	157	157	157	158	158	159	159			
50	131	132	131	131	130	130	130	129	127	127	127	127	128	128	128	129			
55	103	103	103	103	102	103	102	101	99.6	99.1	99.4	99.5	100	100	101	101			
60	78.0	78.2	77.9	77.8	77.4	77.3	76.7	76.3	74.8	74.3	74.7	74.7	75.3	75.5	76.1	76.1			
65	55.8	55.9	55.6	55.5	55.1	55.0	54.5	54.2	52.7	52.4	52.7	52.8	53.3	53.6	54.1	54.1			
70	36.4	36.4	36.2	36.1	35.7	35.6	35.1	35.0	33.6	33.3	33.7	33.6	34.3	34.4	35.0	34.9			
75	19.8	19.9	19.6	19.7	19.3	19.2	18.8	18.7	17.6	17.3	17.6	17.7	18.1	18.3	18.7	18.6			
80	7.24	6.58	6.59	7.10	6.90	6.70	6.10	5.86	5.71	5.18	5.43	5.86	6.12	6.25	5.86	5.82			
85	0.54	0.34	0.47	0.48	0.46	0.36	0.38	0.29	0.25	0.33	0.26	0.36	0.30	0.37	0.27	0.34			
90	0.30	0.30	0.29	0.32	0.30	0.32	0.29	0.31	0.28	0.24	0.28	0.26	0.28	0.26	0.27	0.25			
95	0.35	0.44	0.34	0.44	0.35	0.46	0.37	0.45	0.41	0.32	0.42	0.32	0.40	0.31	0.39	0.32			
100	0.53	0.62	0.54	0.64	0.54	0.64	0.56	0.64	0.59	0.49	0.59	0.48	0.58	0.48	0.58	0.46			
105	0.75	0.84	0.76	0.85	0.75	0.86	0.76	0.86	0.80	0.74	0.81	0.71	0.79	0.72	0.80	0.71			
110	1.03	1.11	1.03	1.12	1.02	1.13	1.05	1.14	1.04	0.96	1.04	0.95	1.04	0.94	1.02	0.93			
115	1.34	1.41	1.33	1.42	1.35	1.42	1.36	1.43	1.34	1.25	1.33	1.24	1.34	1.22	1.31	1.21			
120	1.64	1.74	1.64	1.74	1.65	1.75	1.66	1.76	1.67	1.58	1.66	1.56	1.66	1.54	1.62	1.52			
125	2.00	2.08	2.00	2.09	2.03	2.10	2.01	2.12	1.99	1.92	1.99	1.93	1.99	1.88	1.98	1.89			
130	2.38	2.47	2.37	2.46	2.38	2.49	2.38	2.49	2.37	2.27	2.36	2.27	2.36	2.24	2.34	2.23			
135	2.78	2.85	2.74	2.85	2.75	2.87	2.77	2.88	2.75	2.66	2.74	2.64	2.73	2.62	2.70	2.60			
140	3.14	3.22	3.14	3.22	3.13	3.23	3.14	3.25	3.13	3.03	3.12	3.01	3.10	3.00	3.09	2.98			
145	3.50	3.58	3.47	3.58	3.49	3.60	3.51	3.61	3.51	3.41	3.48	3.41	3.47	3.36	3.44	3.34			
150	3.86	3.93	3.83	3.93	3.85	3.95	3.86	3.96	3.86	3.76	3.85	3.72	3.82	3.71	3.79	3.71			
155	4.18	4.28	4.15	4.26	4.16	4.27	4.19	4.27	4.19	4.09	4.16	4.06	4.14	4.02	4.12	4.03			
160	4.48	4.56	4.46	4.53	4.47	4.57	4.47	4.56	4.49	4.39	4.47	4.36	4.46	4.34	4.44	4.33			
165	4.73	4.81	4.70	4.81	4.73	4.81	4.71	4.82	4.76	4.66	4.76	4.65	4.74	4.64	4.71	4.64			
170	4.94	5.03	4.94	5.01	4.94	5.03	4.92	5.03	5.00	4.92	4.96	4.87	4.98	4.84	4.95	4.85			
175	5.09	5.17	5.11	5.17	5.09	5.17	5.11	5.13	5.16	5.11	5.17	5.05	5.16	5.03	5.13	5.03			
180	5.14	5.17	5.18	5.18	5.21	5.20	5.12	5.13	5.17	5.14	5.18	5.14	5.21	5.13	5.13	5.10			

C Range: 0 - 360DEG
 C Interval: 22.5DEG
 Test Speed: HIGH
 Temperature:25.3°C
 Operators:DAMIN
 Test Date:2024-02-05

γ Range: 0 - 180DEG
 γ Interval: 1.0DEG
 Test System:EVERFINE GO-2000A_V1 SYSTEM V2.00.471
 Humidity:65.0%
 Test Distance:12.020m [K=1.0000]
 Remarks: