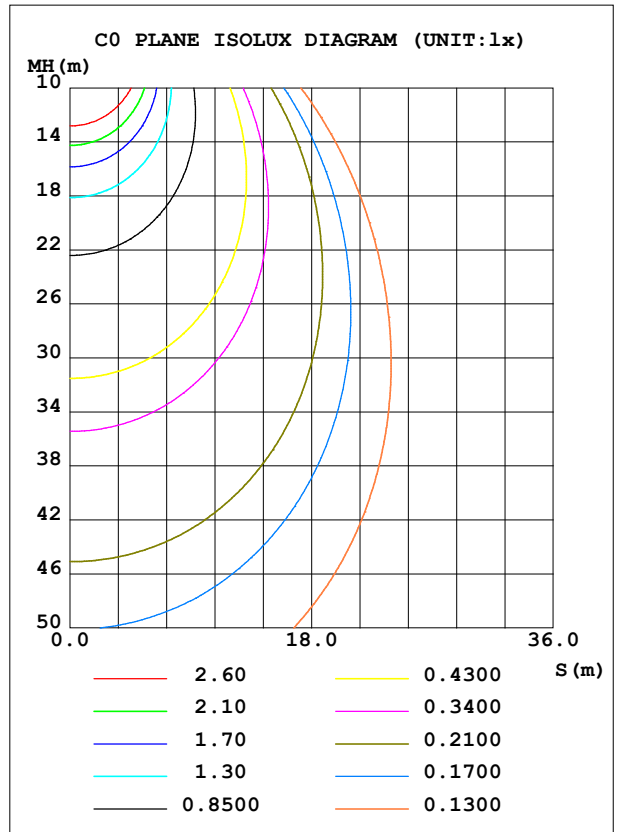
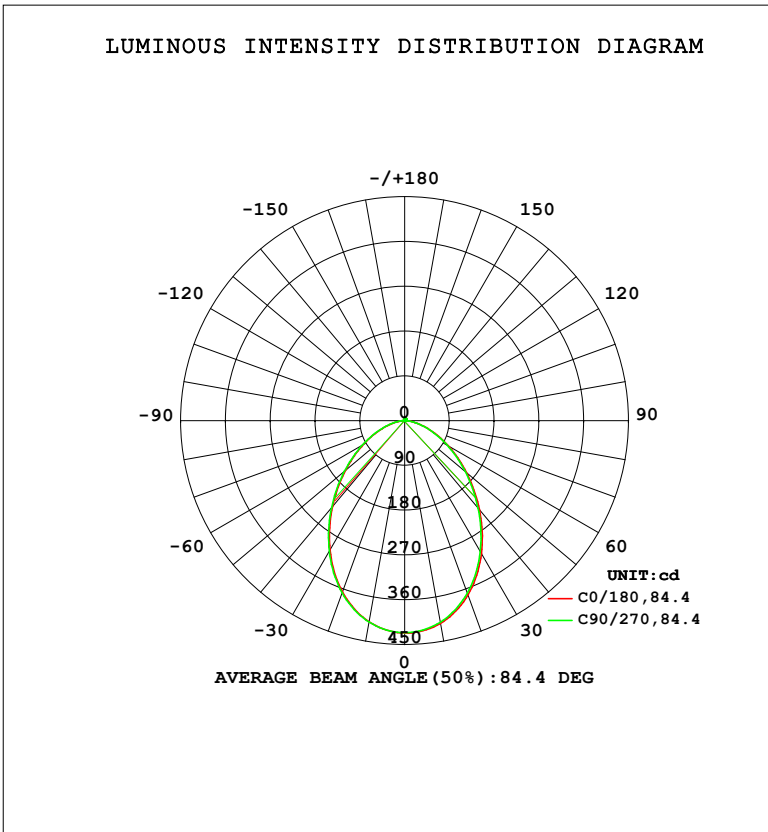


LUMINAIRE PHOTOMETRIC TEST REPORT

Test:U:230.74V I:0.0355A P:7.5127W PF:0.9165 Freq:50.00Hz Lamp Flux:864.825x1 lm		
NAME: R771 XW34A (4000K)	TYPE:	WEIGHT:
SPEC.:	DIM.:	SERIAL No.:
MFR.: EVERFINE	SUR.:	Shielding Angle:

DATA OF LAMP		PHOTOMETRIC DATA			
MODEL		Imax (cd)	426.9	S/MH (C0/180)	1.08
NOMINAL POWER (W)	7.5	LOR (%)	100.0	S/MH (C90/270)	1.09
RATED VOLTAGE (V)	230	TOTAL FLUX (lm)	864.82	η UP, DN (C0-180)	0.9,49.4
NOMINAL FLUX (lm)	864.825	CIE CLASS	DIRECT	η UP, DN (C180-360)	0.9,48.8
LAMPS INSIDE	1	η up (%)	1.8	CIBSE SHR NOM	1.00
TEST VOLTAGE (V)	230	η down (%)	98.2	CIBSE SHR MAX	1.15



C Range: 0 - 360DEG
 C Interval: 22.5DEG
 Test Speed: HIGH
 Temperature:25.3°C
 Operators:DAMIN
 Test Date:2024-02-02

γ Range: 0 - 180DEG
 γ Interval: 1.0DEG
 Test System:EVERFINE GO-2000A_V1 SYSTEM V2.00.471
 Humidity:65.0%
 Test Distance:12.020m [K=1.0000]
 Remarks:

ZONAL FLUX DIAGRAM

ZONAL FLUX DIAGRAM:

γ	C0	C45	C90	C135	C180	C225	C270	C315	γ	Φ zone	Φ total	%lum,lamp
10	414.0	413.1	411.5	410.4	410.6	410.8	411.2	411.4	0- 10	39.97	39.97	4.62,4.62
20	372.5	370.9	368.6	366.8	366.1	366.6	368.1	369.3	10- 20	110.5	150.5	17.4,17.4
30	308.8	306.9	304.1	301.9	300.2	301.2	303.2	305.1	20- 30	155.3	305.8	35.4,35.4
40	234.2	232.5	229.7	227.4	225.5	226.5	228.6	230.6	30- 40	166.6	472.4	54.6,54.6
50	162.3	161.1	158.9	156.8	154.9	156.0	157.8	159.4	40- 50	148.8	621.2	71.8,71.8
60	101.4	100.6	98.84	97.36	95.87	96.84	98.13	99.26	50- 60	113.8	735.0	85,85
70	53.23	52.57	51.34	50.35	49.16	50.02	50.88	51.57	60- 70	72.93	807.9	93.4,93.4
80	17.90	16.97	17.09	16.03	15.77	15.97	17.03	16.47	70- 80	34.46	842.3	97.4,97.4
90	0.5274	0.4811	0.4723	0.4702	0.4134	0.4224	0.4132	0.4130	80- 90	7.295	849.6	98.2,98.2
100	0.7501	0.7593	0.7780	0.7783	0.8167	0.7978	0.7973	0.7695	90-100	0.6369	850.3	98.3,98.3
110	1.331	1.350	1.341	1.369	1.379	1.361	1.341	1.324	100-110	1.112	851.4	98.4,98.4
120	2.072	2.091	2.091	2.101	2.093	2.064	2.045	2.027	110-120	1.680	853.1	98.6,98.6
130	2.898	2.888	2.925	2.945	2.908	2.889	2.861	2.814	120-130	2.211	855.3	98.9,98.9
140	3.761	3.733	3.779	3.797	3.762	3.734	3.696	3.659	130-140	2.559	857.8	99.2,99.2
150	4.575	4.530	4.595	4.604	4.587	4.540	4.502	4.474	140-150	2.596	860.4	99.5,99.5
160	5.251	5.243	5.251	5.261	5.299	5.252	5.215	5.197	150-160	2.260	862.7	99.8,99.8
170	5.805	5.823	5.823	5.787	5.853	5.834	5.816	5.796	160-170	1.562	864.3	99.9,99.9
180	6.031	6.021	6.059	6.012	6.031	6.021	6.049	6.021	170-180	0.5653	864.8	100,100
DEG	LUMINOUS INTENSITY:cd									UNIT:lm		

Conical surface Flux(90deg): 550.43 lm

%lum = 63.6%

%lamp = 63.6%

Conical surface Flux(120deg): 734.96 lm

%lum = 85.0%

%lamp = 85.0%

0 - 45 DEG Zonal Flux:550.43 %lum: 63.6%

0 - 60 DEG Zonal Flux:734.96 %lum: 85.0%

All measured values may vary less than 35 %

from the average measured value in the 0 to 130 deg. zone: 12.3%

All measured values in the 0 to 130 deg. zone

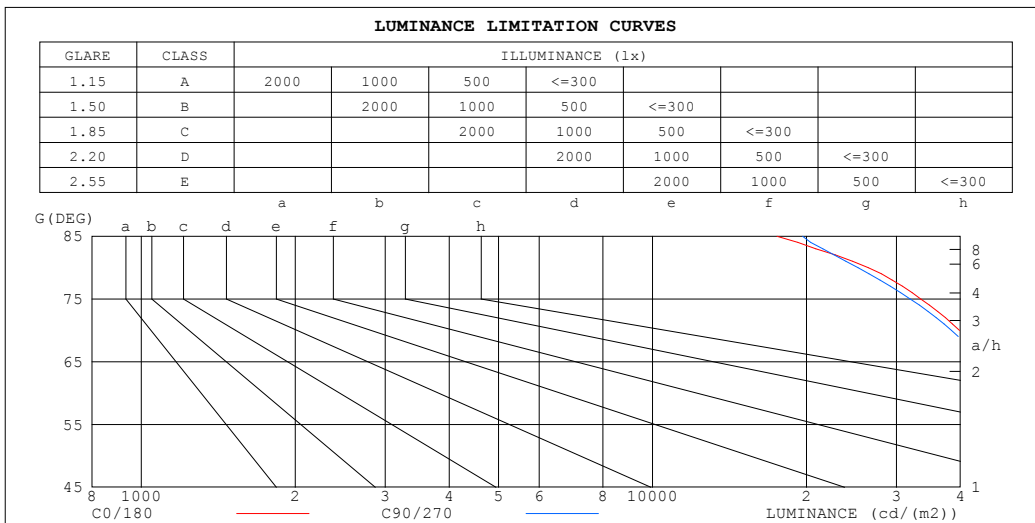
may vary less than 50% from the average value of itself: 17.9%

C Range: 0 - 360DEG
 C Interval: 22.5DEG
 Test Speed: HIGH
 Temperature:25.3°C
 Operators:DAMIN
 Test Date:2024-02-02

γ Range: 0 - 180DEG
 γ Interval: 1.0DEG
 Test System:EVERFINE GO-2000A_V1 SYSTEM V2.00.471
 Humidity:65.0%
 Test Distance:12.020m [K=1.0000]
 Remarks:

LUMINANCE LIMITATION CURVES

Test:U:230.74V I:0.0355A P:7.5127W PF:0.9165 Freq:50.00Hz Lamp Flux:864.825x1 lm		
NAME: R771 XW34A (4000K)	TYPE:	WEIGHT:
SPEC.:	DIM.:	SERIAL No.:
MFR.: EVERFINE	SUR.:	Shielding Angle:



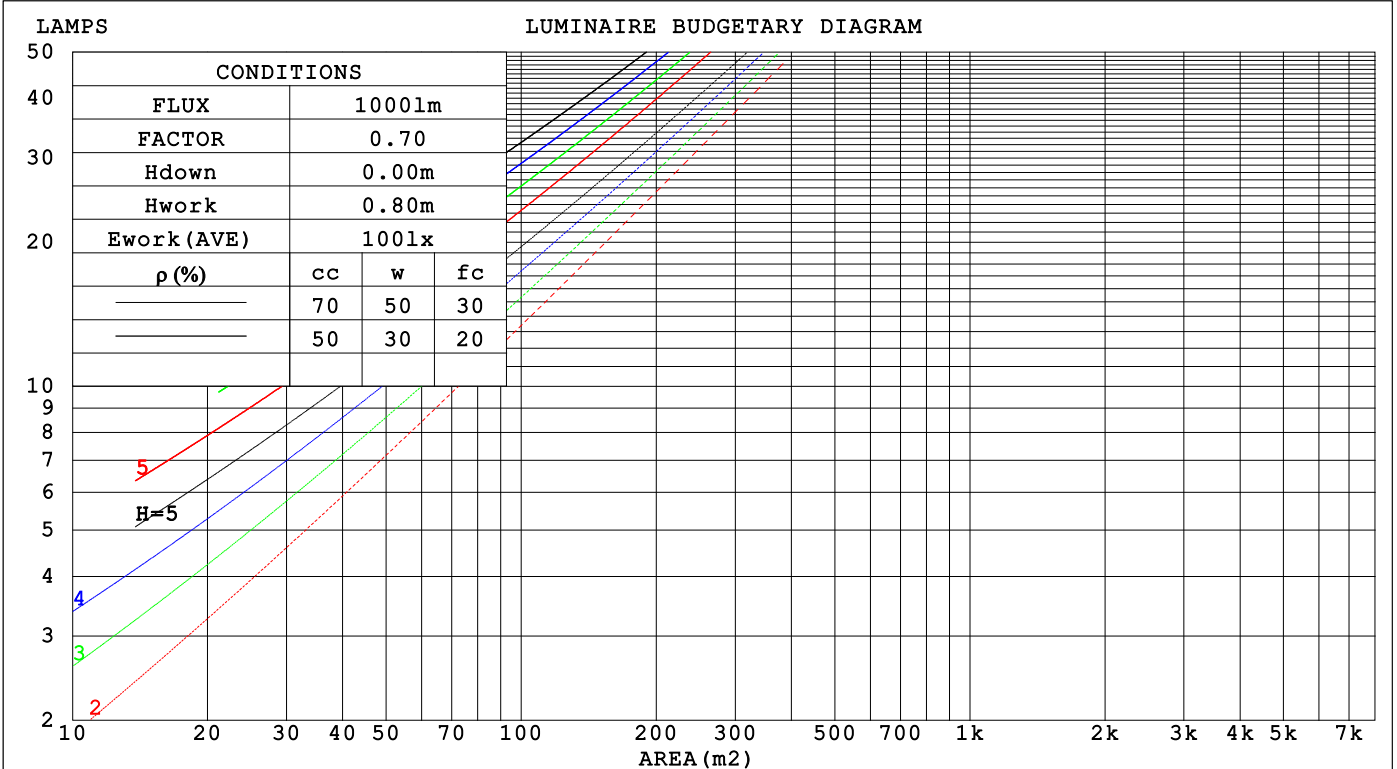
C Range: 0 - 360DEG
 C Interval: 22.5DEG
 Test Speed: HIGH
 Temperature:25.3°C
 Operators:DAMIN
 Test Date:2024-02-02

γ Range: 0 - 180DEG
 γ Interval: 1.0DEG
 Test System:EVERFINE GO-2000A_V1 SYSTEM V2.00.471
 Humidity:65.0%
 Test Distance:12.020m [K=1.0000]
 Remarks:

CU AND LUMINAIRE BUDGETARY ESTIMATE DIAGRAM

Test:U:230.74V I:0.0355A P:7.5127W PF:0.9165 Freq:50.00Hz Lamp Flux:864.825x1 lm		
NAME: R771 XW34A (4000K)	TYPE:	WEIGHT:
SPEC.:	DIM.:	SERIAL No.:
MFR.: EVERFINE	SUR.:	Shielding Angle:

ρ_{cc}	80%			70%			50%			30%			10%			0
ρ_w	50%	30%	10%	50%	30%	10%	50%	30%	10%	50%	30%	10%	50%	30%	10%	0
ρ_{fc}	20%			20%			20%			20%			20%			0
RCR	RCR:Room Cavity Ratio						Coefficients of Utilization(CU)									
0.0	1.19	1.19	1.19	1.16	1.16	1.16	1.10	1.10	1.10	1.05	1.05	1.05	1.00	1.00	1.00	.98
1.0	1.06	1.02	.99	1.03	.90	.97	.99	.96	.94	.95	.92	.90	.91	.89	.87	.85
2.0	.94	.88	.83	.92	.86	.82	.88	.83	.79	.85	.81	.77	.81	.78	.76	.73
3.0	.84	.76	.71	.82	.75	.70	.79	.73	.68	.76	.71	.67	.73	.69	.66	.64
4.0	.75	.67	.61	.74	.66	.61	.71	.65	.60	.69	.63	.59	.66	.62	.58	.56
5.0	.68	.60	.54	.67	.59	.53	.64	.58	.52	.62	.56	.52	.60	.55	.51	.49
6.0	.62	.53	.47	.61	.53	.47	.59	.52	.47	.57	.51	.46	.55	.50	.46	.44
7.0	.56	.48	.42	.55	.48	.42	.54	.47	.42	.52	.46	.41	.51	.45	.41	.39
8.0	.52	.44	.38	.51	.43	.38	.50	.43	.38	.48	.42	.38	.47	.41	.37	.35
9.0	.48	.40	.35	.47	.40	.35	.46	.39	.34	.45	.39	.34	.44	.38	.34	.32
10.0	.44	.37	.32	.44	.37	.32	.43	.36	.32	.42	.36	.31	.41	.35	.31	.29



C Range: 0 - 360DEG
 C Interval: 22.5DEG
 Test Speed: HIGH
 Temperature:25.3°C
 Operators:DAMIN
 Test Date:2024-02-02

γ Range: 0 - 180DEG
 γ Interval: 1.0DEG
 Test System:EVERFINE GO-2000A_V1 SYSTEM V2.00.471
 Humidity:65.0%
 Test Distance:12.020m [K=1.0000]
 Remarks:

WEC AND CCEC

Test:U:230.74V I:0.0355A P:7.5127W PF:0.9165 Freq:50.00Hz		
Lamp Flux:864.825x1 lm		
NAME: R771 XW34A (4000K)	TYPE:	WEIGHT:
SPEC.:	DIM.:	SERIAL No.:
MFR.: EVERFINE	SUR.:	Shielding Angle:

ρ_{CC}	80%			70%			50%			30%			10%			0
ρ_w	50%	30%	10%	50%	30%	10%	50%	30%	10%	50%	30%	10%	50%	30%	10%	0
ρ_{fc}	20%			20%			20%			20%			20%			0
RCR	RCR:Room Cavity Ratio						Wall Exitance Coefficients (WEC)									
0.0																
1.0	.267	.152	.048	.259	.148	.047	.245	.141	.045	.232	.134	.043	.220	.128	.041	
2.0	.255	.140	.043	.249	.137	.042	.237	.132	.041	.225	.126	.040	.215	.121	.038	
3.0	.240	.128	.038	.234	.125	.038	.223	.121	.037	.213	.117	.036	.204	.113	.035	
4.0	.224	.116	.034	.219	.115	.034	.209	.111	.033	.200	.108	.032	.192	.104	.032	
5.0	.209	.107	.031	.205	.105	.031	.196	.102	.030	.188	.099	.030	.181	.097	.029	
6.0	.196	.098	.028	.192	.097	.028	.184	.094	.027	.177	.092	.027	.170	.090	.027	
7.0	.183	.091	.026	.180	.090	.026	.173	.087	.025	.167	.085	.025	.161	.083	.025	
8.0	.172	.084	.024	.169	.083	.024	.163	.081	.023	.157	.080	.023	.152	.078	.023	
9.0	.163	.079	.022	.160	.078	.022	.154	.076	.022	.149	.075	.021	.144	.073	.021	
10.0	.154	.074	.020	.151	.073	.020	.146	.071	.020	.141	.070	.020	.137	.069	.020	

ρ_{CC}	80%			70%			50%			30%			10%			0
ρ_w	50%	30%	10%	50%	30%	10%	50%	30%	10%	50%	30%	10%	50%	30%	10%	0
ρ_{fc}	20%			20%			20%			20%			20%			0
RCR	RCR:Room Cavity Ratio						Ceiling Cavity Exitance Coefficients (CCEC)									
0.0	.204	.204	.204	.174	.174	.174	.119	.119	.119	.068	.068	.068	.022	.022	.022	
1.0	.191	.170	.151	.163	.146	.130	.112	.100	.090	.064	.058	.052	.021	.019	.017	
2.0	.181	.146	.116	.155	.125	.100	.106	.087	.070	.061	.050	.041	.020	.016	.013	
3.0	.172	.128	.092	.148	.110	.080	.101	.077	.056	.059	.045	.033	.019	.015	.011	
4.0	.164	.114	.076	.141	.099	.066	.097	.069	.046	.056	.040	.027	.018	.013	.009	
5.0	.157	.104	.064	.135	.090	.056	.093	.063	.039	.054	.037	.023	.017	.012	.008	
6.0	.150	.095	.056	.129	.082	.048	.089	.058	.034	.052	.034	.020	.017	.011	.007	
7.0	.143	.088	.049	.123	.076	.043	.085	.053	.030	.050	.032	.018	.016	.010	.006	
8.0	.137	.082	.044	.118	.071	.039	.082	.050	.027	.048	.030	.016	.015	.010	.005	
9.0	.132	.077	.040	.113	.067	.035	.079	.047	.025	.046	.028	.015	.015	.009	.005	
10.0	.126	.073	.037	.109	.063	.033	.076	.045	.023	.044	.026	.014	.014	.009	.005	

C Range: 0 - 360DEG
 C Interval: 22.5DEG
 Test Speed: HIGH
 Temperature:25.3°C
 Operators:DAMIN
 Test Date:2024-02-02

γ Range: 0 - 180DEG
 γ Interval: 1.0DEG
 Test System:EVERFINE GO-2000A_V1 SYSTEM V2.00.471
 Humidity:65.0%
 Test Distance:12.020m [K=1.0000]
 Remarks:

UGR(Unified Glare Rating) Table

Test:U:230.74V I:0.0355A P:7.5127W PF:0.9165 Freq:50.00Hz										
Lamp Flux:864.825x1 lm										
NAME: R771 XW34A (4000K)					TYPE:			WEIGHT:		
SPEC.:					DIM.:			SERIAL No.:		
MFR.: EVERFINE					SUR.:			Shielding Angle:		
ceiling/cavity	0.7	0.7	0.5	0.5	0.3	0.7	0.7	0.5	0.5	0.3
walls	0.5	0.3	0.5	0.3	0.3	0.5	0.3	0.5	0.3	0.3
working plane	0.2	0.2	0.2	0.2	0.2	0.2	0.2	0.2	0.2	0.2
Room dimensions	Viewed crosswise					Viewed endwise				
x = 2H y = 2H	26.4	27.8	26.7	28.0	28.3	26.4	27.7	26.6	27.9	28.2
3H	27.4	28.7	27.7	28.9	29.2	27.3	28.5	27.6	28.8	29.1
4H	27.7	28.9	28.1	29.2	29.5	27.6	28.8	27.9	29.1	29.3
6H	27.9	29.0	28.3	29.3	29.6	27.8	28.9	28.1	29.2	29.5
8H	27.9	29.0	28.3	29.3	29.6	27.8	28.9	28.2	29.2	29.5
12H	27.9	29.0	28.3	29.3	29.6	27.8	28.8	28.2	29.2	29.5
4H 2H	26.8	28.0	27.2	28.3	28.6	26.8	27.9	27.1	28.2	28.5
3H	28.0	29.0	28.3	29.3	29.6	27.9	28.9	28.2	29.2	29.5
4H	28.4	29.3	28.8	29.7	30.0	28.3	29.2	28.7	29.6	29.9
6H	28.7	29.5	29.1	29.9	30.3	28.5	29.4	29.0	29.7	30.1
8H	28.7	29.5	29.2	29.9	30.3	28.6	29.4	29.0	29.8	30.2
12H	28.7	29.4	29.2	29.9	30.3	28.6	29.3	29.1	29.8	30.2
8H 4H	28.5	29.3	28.9	29.7	30.1	28.4	29.2	28.8	29.6	30.0
6H	28.9	29.5	29.3	29.9	30.4	28.8	29.4	29.2	29.8	30.3
8H	29.0	29.5	29.5	30.0	30.5	28.9	29.4	29.4	29.9	30.4
12H	29.0	29.5	29.5	30.0	30.5	29.0	29.4	29.5	29.9	30.4
12H 4H	28.5	29.2	28.9	29.6	30.0	28.4	29.1	28.8	29.5	29.9
6H	28.9	29.4	29.4	29.9	30.4	28.8	29.3	29.3	29.8	30.3
8H	29.0	29.5	29.5	29.9	30.5	28.9	29.4	29.4	29.9	30.4
Variations with the observer position at spacings(CIE Pub.117):										
S = 1.0H	+ 0.3 / - 0.4					+ 0.3 / - 0.4				
1.5H	+ 0.1 / - 0.2					+ 0.1 / - 0.2				
2.0H	+ 0.5 / - 0.5					+ 0.5 / - 0.5				

CIE Pub.117, 864.8 lm Total Lamp Luminous Flux Corrected (8log(F/F0) = -0.5)
 Area: 0.0039036 m2

C Range: 0 - 360DEG
 C Interval: 22.5DEG
 Test Speed: HIGH
 Temperature:25.3°C
 Operators:DAMIN
 Test Date:2024-02-02

γ Range: 0 - 180DEG
 γ Interval: 1.0DEG
 Test System:EVERFINE GO-2000A_V1 SYSTEM V2.00.471
 Humidity:65.0%
 Test Distance:12.020m [K=1.0000]
 Remarks:

UTILIZATION FACTORS TABLE

Test:U:230.74V I:0.0355A P:7.5127W PF:0.9165 Freq:50.00Hz Lamp Flux:864.825x1 lm		
NAME: R771 XW34A (4000K)	TYPE:	WEIGHT:
SPEC.:	DIM.:	SERIAL No.:
MFR.: EVERFINE	SUR.:	Shielding Angle:

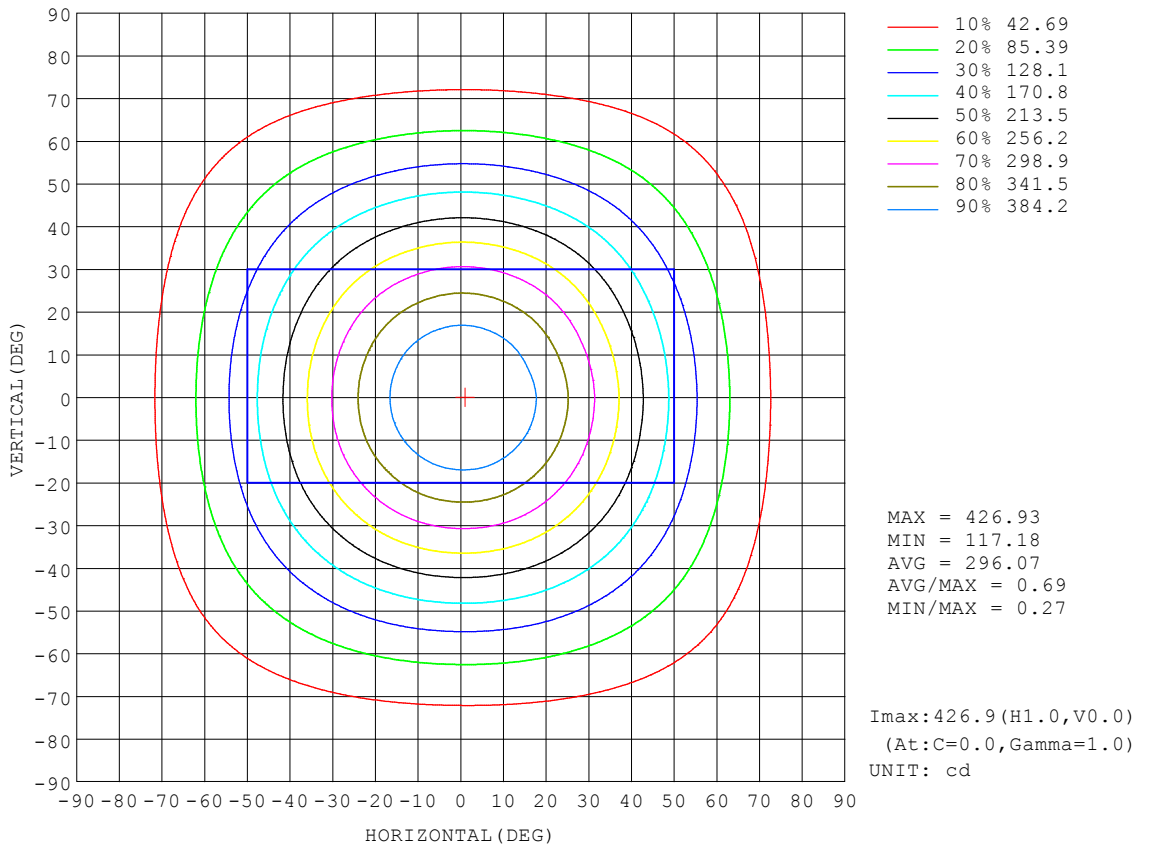
REFLECTANCE										
Ceiling	0.8	0.8	0.8	0.7	0.7	0.7	0.5	0.5	0.5	0
Walls	0.7	0.5	0.3	0.7	0.5	0.3	0.7	0.5	0.3	0
Working plane	0.2	0.2	0.2	0.2	0.2	0.2	0.2	0.2	0.2	0
ROOM INDEX	UTILIZATION FACTORS (PERCENT) $k(RI) \times RCR = 5$									
k = 0.60	63	53	46	63	53	46	61	52	46	40
0.80	73	63	56	72	62	56	70	62	56	49
1.00	81	71	65	80	71	65	78	72	64	57
1.25	88	79	72	86	78	72	84	76	71	64
1.50	92	84	78	91	83	77	88	81	76	69
2.00	98	91	85	96	90	84	93	87	83	75
2.50	102	95	90	100	93	89	96	91	87	79
3.00	104	99	94	102	97	93	98	94	90	82
4.00	108	103	99	105	101	98	101	98	95	86
5.00	110	106	102	107	104	101	103	100	97	88
ROOM INDEX	UF(total)									Direct
According to DIN EN 13032-2 2004			Suspended				SHRNOM = 1.25			

C Range: 0 - 360DEG
 C Interval: 22.5DEG
 Test Speed: HIGH
 Temperature:25.3°C
 Operators:DAMIN
 Test Date:2024-02-02

γ Range: 0 - 180DEG
 γ Interval: 1.0DEG
 Test System:EVERFINE GO-2000A_V1 SYSTEM V2.00.471
 Humidity:65.0%
 Test Distance:12.020m [K=1.0000]
 Remarks:

ISOCANDELA DIAGRAM

Test:U:230.74V I:0.0355A P:7.5127W PF:0.9165 Freq:50.00Hz Lamp Flux:864.825x1 lm		
NAME: R771 XW34A (4000K)	TYPE:	WEIGHT:
SPEC.:	DIM.:	SERIAL No.:
MFR.: EVERFINE	SUR.:	Shielding Angle:

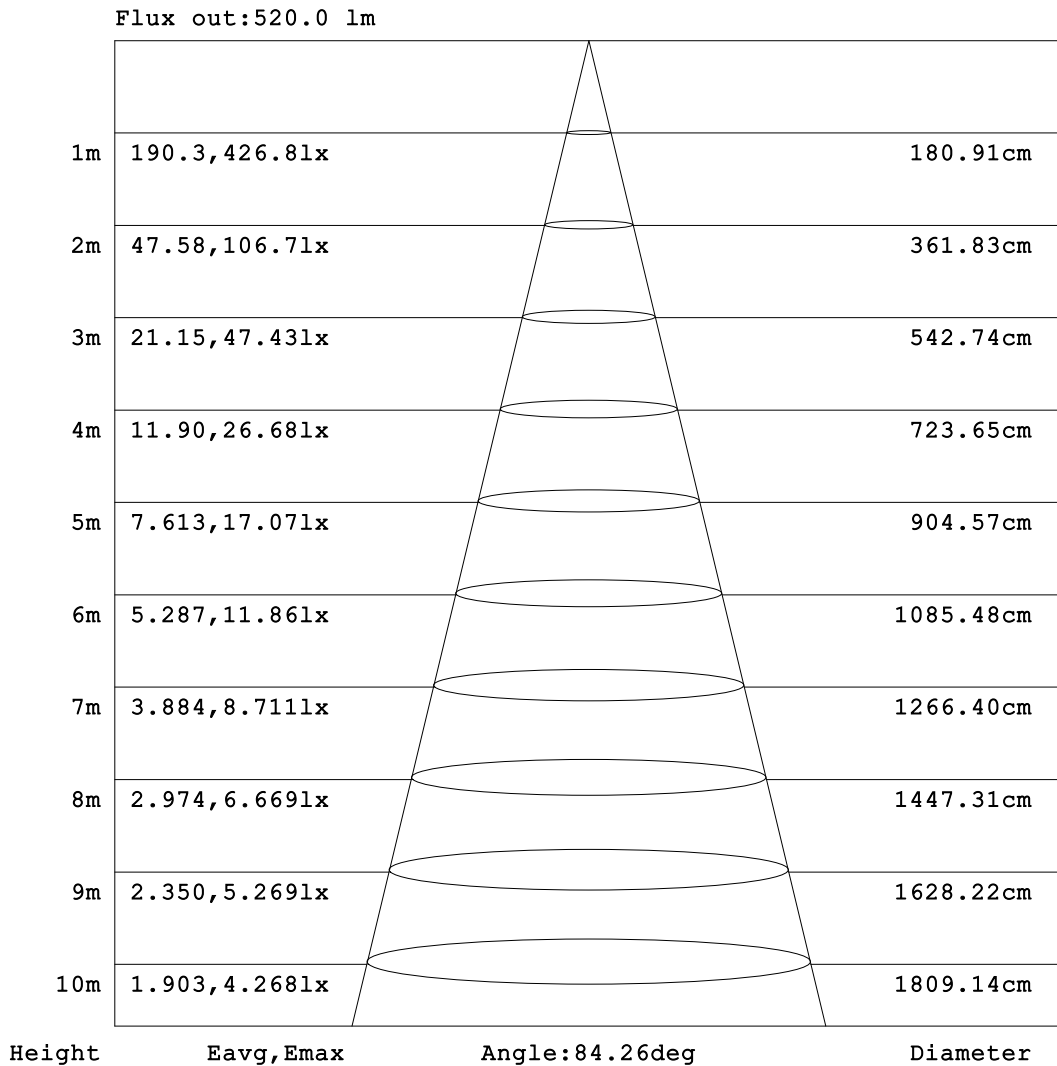


C Range: 0 - 360DEG
 C Interval: 22.5DEG
 Test Speed: HIGH
 Temperature:25.3°C
 Operators:DAMIN
 Test Date:2024-02-02

γ Range: 0 - 180DEG
 γ Interval: 1.0DEG
 Test System:EVERFINE GO-2000A_V1 SYSTEM V2.00.471
 Humidity:65.0%
 Test Distance:12.020m [K=1.0000]
 Remarks:

AAI Figure

Test:U:230.74V I:0.0355A P:7.5127W PF:0.9165 Freq:50.00Hz Lamp Flux:864.825x1 lm		
NAME: R771 XW34A (4000K)	TYPE:	WEIGHT:
SPEC.:	DIM.:	SERIAL No.:
MFR.: EVERFINE	SUR.:	Shielding Angle:



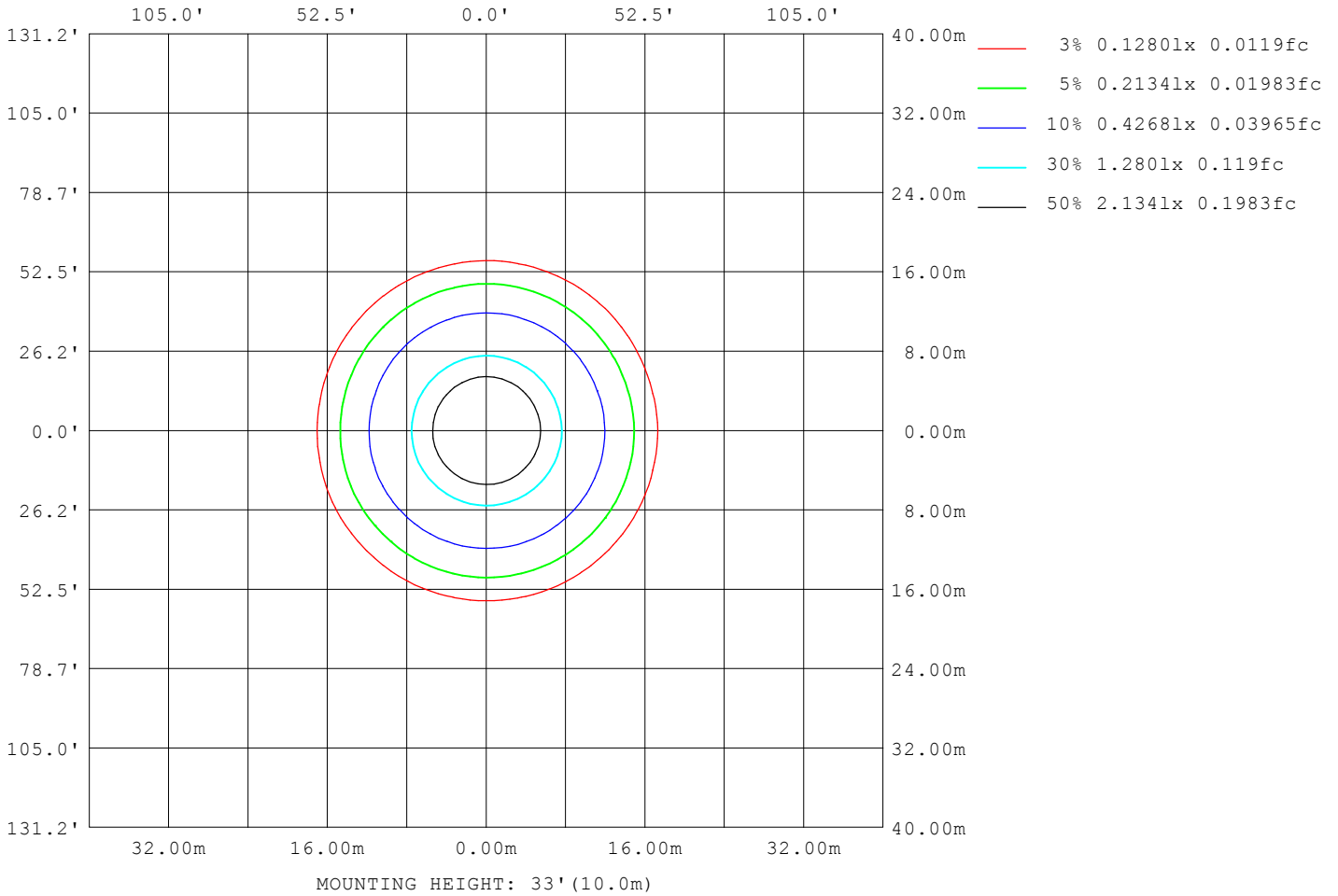
Note: The Curves indicate the illuminated area and the average illumination when the luminaire is at different distance.

C Range: 0 - 360DEG
 C Interval: 22.5DEG
 Test Speed: HIGH
 Temperature: 25.3°C
 Operators: DAMIN
 Test Date: 2024-02-02

γ Range: 0 - 180DEG
 γ Interval: 1.0DEG
 Test System: EVERFINE GO-2000A_V1 SYSTEM V2.00.471
 Humidity: 65.0%
 Test Distance: 12.020m [K=1.0000]
 Remarks:

ISOLUX DIAGRAM

Test:U:230.74V I:0.0355A P:7.5127W PF:0.9165 Freq:50.00Hz Lamp Flux:864.825x1 lm		
NAME: R771 XW34A (4000K)	TYPE:	WEIGHT:
SPEC.:	DIM.:	SERIAL No.:
MFR.: EVERFINE	SUR.:	Shielding Angle:



C Range: 0 - 360DEG
 C Interval: 22.5DEG
 Test Speed: HIGH
 Temperature:25.3°C
 Operators:DAMIN
 Test Date:2024-02-02

γ Range: 0 - 180DEG
 γ Interval: 1.0DEG
 Test System:EVERFINE GO-2000A_V1 SYSTEM V2.00.471
 Humidity:65.0%
 Test Distance:12.020m [K=1.0000]
 Remarks:

LED Avg.L Report

Test:U:230.74V I:0.0355A P:7.5127W PF:0.9165 Freq:50.00Hz Lamp Flux:864.825x1 lm		
NAME: R771 XW34A (4000K)	TYPE:	WEIGHT:
SPEC.:	DIM.:	SERIAL No.:
MFR.: EVERFINE	SUR.:	Shielding Angle:

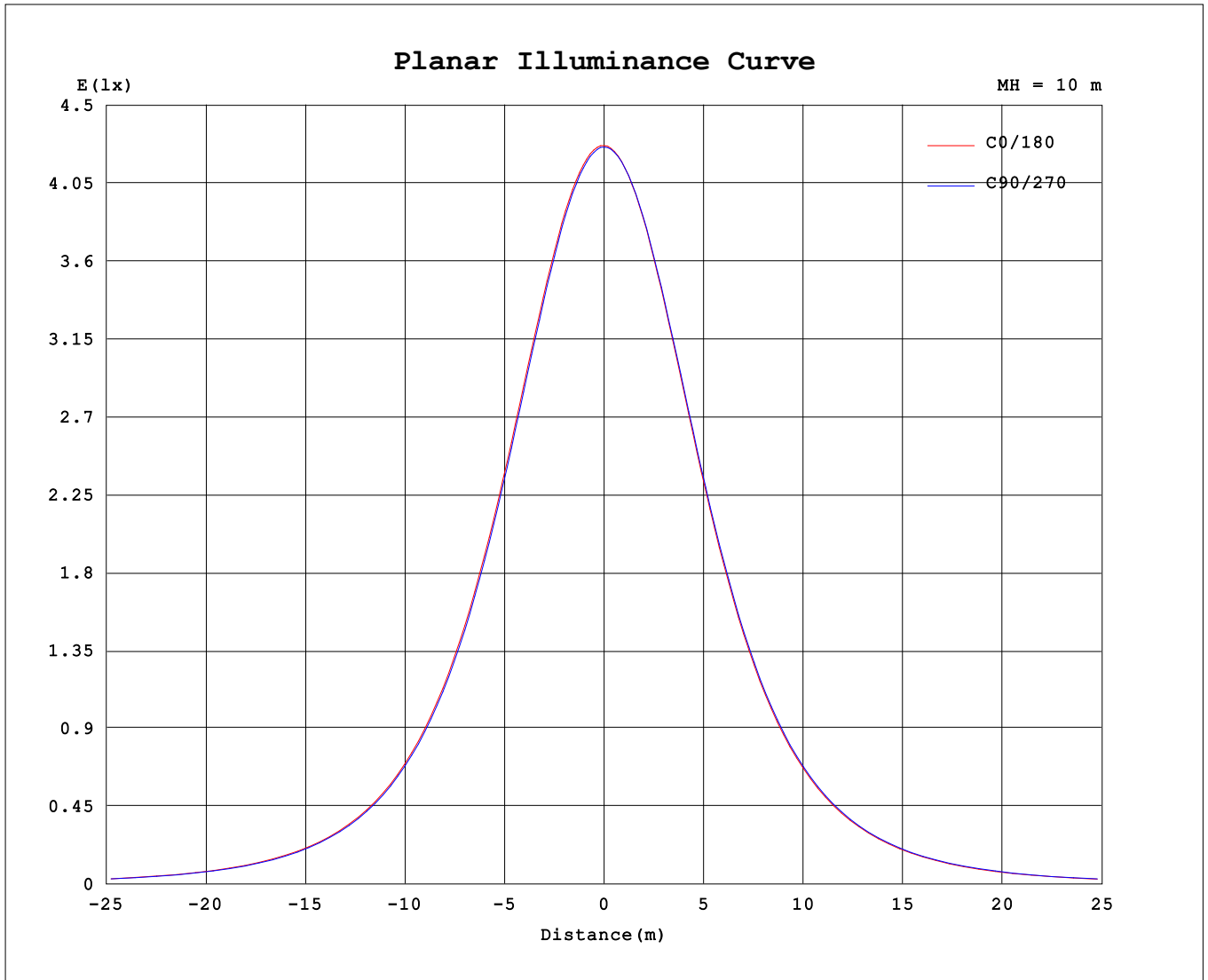
AvgL	cd/m2
L_0~180 (65) av	44468
L_0~180 (75) av	31901
L_0~180 (85) av	16124
L_90~270 (65) av	44392
L_90~270 (75) av	31826
L_90~270 (85) av	19531
L_45 (65) av	44401
L_45 (75) av	31807
L_45 (85) av	15869

Standard: GB/T 29293-2012

C Range: 0 - 360DEG
 C Interval: 22.5DEG
 Test Speed: HIGH
 Temperature:25.3°C
 Operators:DAMIN
 Test Date:2024-02-02

γ Range: 0 - 180DEG
 γ Interval: 1.0DEG
 Test System:EVERFINE GO-2000A_V1 SYSTEM V2.00.471
 Humidity:65.0%
 Test Distance:12.020m [K=1.0000]
 Remarks:

Planar Illuminance Curve



C Range: 0 - 360DEG
 C Interval: 22.5DEG
 Test Speed: HIGH
 Temperature: 25.3°C
 Operators: DAMIN
 Test Date: 2024-02-02

γ Range: 0 - 180DEG
 γ Interval: 1.0DEG
 Test System: EVERFINE GO-2000A_V1 SYSTEM V2.00.471
 Humidity: 65.0%
 Test Distance: 12.020m [K=1.0000]
 Remarks:

LUMINOUS DISTRIBUTION INTENSITY DATA

Test:U:230.74V I:0.0355A P:7.5127W PF:0.9165 Freq:50.00Hz Lamp Flux:864.825x1 lm		
NAME: R771 XW34A (4000K)	TYPE:	WEIGHT:
SPEC.:	DIM.:	SERIAL No.:
MFR.: EVERFINE	SUR.:	Shielding Angle:

Table--1

UNIT: cd

C (DEG) \ γ (DEG)	0	22.5	45	67.5	90	112.5	135	157.5	180	202.5	225	247.5	270	292.5	315	337.5			
0	427	427	426	426	426	426	426	425	427	427	426	426	426	426	426	425			
5	424	424	423	423	422	422	421	421	422	422	422	422	422	422	422	422			
10	414	414	413	412	412	411	410	410	411	410	411	411	411	411	411	411			
15	397	396	395	395	393	393	392	392	392	391	392	392	393	393	394	394			
20	372	372	371	370	369	368	367	367	366	366	367	367	368	368	369	369			
25	343	342	341	340	338	338	336	336	335	335	336	336	338	338	339	339			
30	309	308	307	306	304	303	302	302	300	300	301	302	303	304	305	305			
35	272	271	270	269	267	266	265	265	263	263	264	265	266	267	268	268			
40	234	234	232	232	230	229	227	227	225	226	227	227	229	229	231	231			
45	197	197	196	195	193	192	191	191	189	189	190	191	192	193	194	194			
50	162	162	161	160	159	158	157	157	155	155	156	156	158	158	159	159			
55	130	130	129	129	127	127	126	125	124	124	125	125	126	127	128	128			
60	101	101	101	100	98.8	98.3	97.4	97.3	95.9	96.0	96.8	97.1	98.1	98.5	99.3	99.1			
65	75.8	75.7	75.0	74.6	73.5	73.0	72.3	72.2	71.0	71.2	71.9	72.2	72.9	73.2	73.9	73.8			
70	53.2	53.1	52.6	52.1	51.3	50.9	50.4	50.2	49.2	49.5	50.0	50.3	50.9	51.1	51.6	51.5			
75	33.8	33.5	33.2	32.9	32.2	32.1	31.5	31.6	30.7	30.8	31.4	31.5	32.1	32.2	32.5	32.2			
80	17.9	17.1	17.0	17.6	17.1	16.9	16.0	16.0	15.8	15.4	16.0	16.7	17.0	17.2	16.5	16.2			
85	5.96	5.84	5.71	6.75	6.69	6.49	5.32	5.34	5.01	4.79	5.19	6.15	6.60	6.26	5.38	5.17			
90	0.53	0.47	0.48	0.46	0.47	0.47	0.47	0.48	0.41	0.42	0.42	0.43	0.41	0.42	0.41	0.43			
95	0.53	0.64	0.58	0.64	0.56	0.66	0.59	0.65	0.59	0.50	0.60	0.49	0.58	0.48	0.57	0.47			
100	0.75	0.85	0.76	0.85	0.78	0.87	0.78	0.88	0.82	0.74	0.80	0.73	0.80	0.70	0.77	0.69			
105	1.03	1.12	1.04	1.13	1.04	1.15	1.04	1.15	1.08	0.96	1.06	0.96	1.04	0.93	1.01	0.92			
110	1.33	1.43	1.35	1.44	1.34	1.45	1.37	1.47	1.38	1.27	1.36	1.27	1.34	1.23	1.32	1.21			
115	1.68	1.78	1.69	1.79	1.71	1.81	1.71	1.83	1.72	1.63	1.71	1.60	1.68	1.57	1.64	1.55			
120	2.07	2.16	2.09	2.18	2.09	2.19	2.10	2.20	2.09	1.99	2.06	1.95	2.05	1.94	2.03	1.92			
125	2.48	2.56	2.47	2.58	2.51	2.61	2.52	2.60	2.50	2.38	2.46	2.35	2.45	2.32	2.41	2.31			
130	2.90	2.99	2.89	3.01	2.93	3.03	2.94	3.04	2.91	2.82	2.89	2.81	2.86	2.74	2.81	2.71			
135	3.32	3.41	3.32	3.42	3.36	3.47	3.37	3.46	3.34	3.22	3.31	3.19	3.27	3.15	3.23	3.14			
140	3.76	3.79	3.73	3.85	3.78	3.88	3.80	3.89	3.76	3.65	3.73	3.63	3.70	3.57	3.66	3.57			
145	4.18	4.25	4.19	4.25	4.18	4.29	4.20	4.30	4.19	4.07	4.16	4.04	4.11	3.98	4.07	3.99			
150	4.58	4.62	4.53	4.63	4.59	4.68	4.60	4.68	4.59	4.47	4.54	4.44	4.50	4.38	4.47	4.39			
155	4.93	4.99	4.92	4.99	4.92	5.03	4.95	5.06	4.96	4.83	4.92	4.79	4.87	4.77	4.86	4.76			
160	5.25	5.34	5.24	5.33	5.25	5.36	5.26	5.38	5.30	5.17	5.25	5.15	5.22	5.09	5.20	5.11			
165	5.55	5.64	5.54	5.63	5.55	5.66	5.55	5.67	5.60	5.49	5.56	5.46	5.54	5.41	5.52	5.42			
170	5.81	5.87	5.82	5.87	5.82	5.88	5.79	5.88	5.85	5.73	5.83	5.71	5.82	5.70	5.80	5.68			
175	5.99	6.02	5.98	6.02	6.01	6.04	5.96	6.03	6.04	5.92	6.02	5.91	6.02	5.89	6.00	5.90			
180	6.03	6.02	6.02	6.02	6.06	6.06	6.01	6.03	6.03	6.02	6.02	6.01	6.05	6.02	6.02	6.00			

C Range: 0 - 360DEG
 C Interval: 22.5DEG
 Test Speed: HIGH
 Temperature:25.3°C
 Operators:DAMIN
 Test Date:2024-02-02

γ Range: 0 - 180DEG
 γ Interval: 1.0DEG
 Test System:EVERFINE GO-2000A_V1 SYSTEM V2.00.471
 Humidity:65.0%
 Test Distance:12.020m [K=1.0000]
 Remarks: