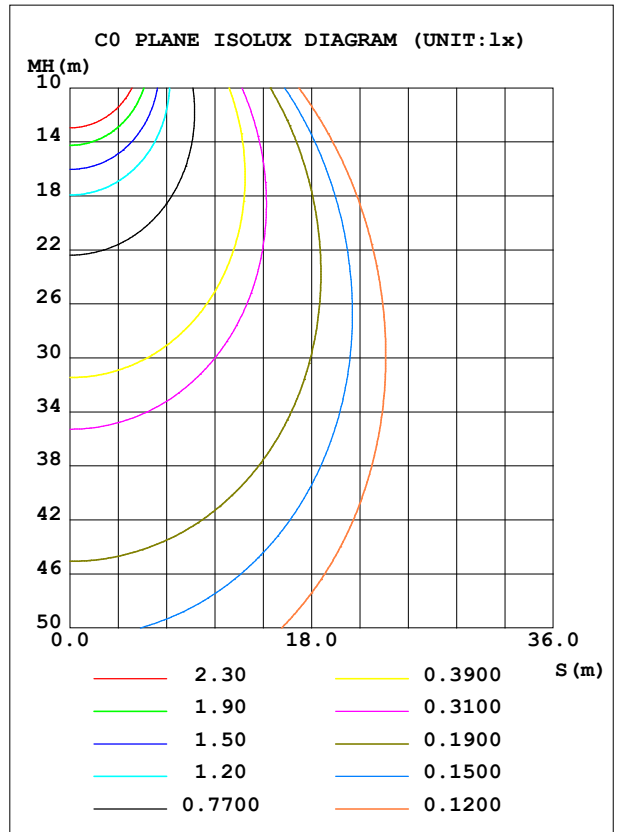
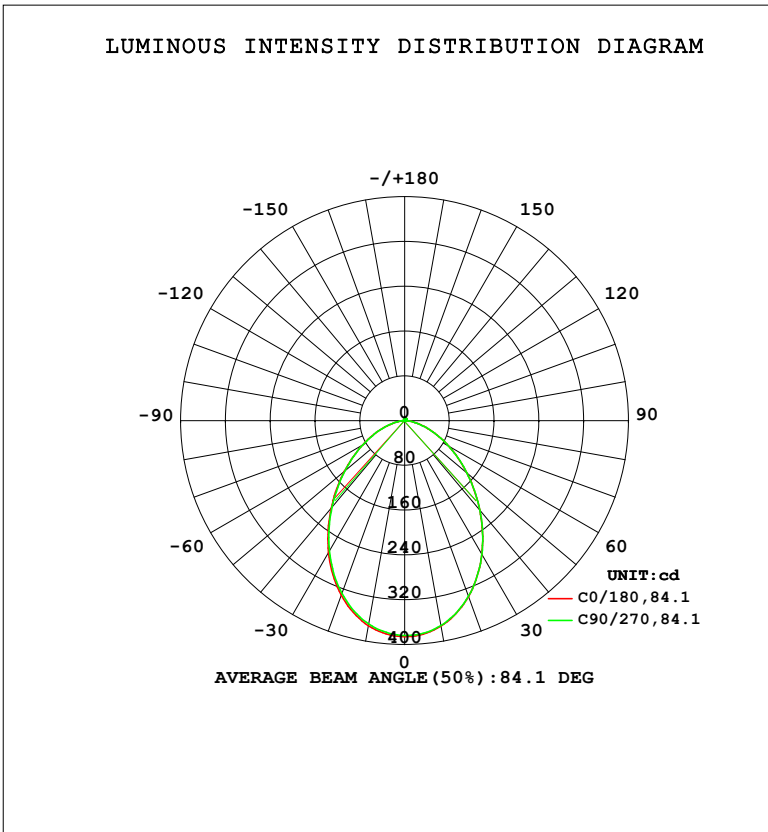


LUMINAIRE PHOTOMETRIC TEST REPORT

Test:U:230.74V I:0.0357A P:7.5736W PF:0.9192 Freq:50.00Hz Lamp Flux:776.285x1 lm		
NAME: R771 XW34A (3000K)	TYPE:	WEIGHT:
SPEC.:	DIM.:	SERIAL No.:
MFR.: EVERFINE	SUR.:	Shielding Angle:

DATA OF LAMP		PHOTOMETRIC DATA			
MODEL		Imax (cd)	385.9	S/MH (C0/180)	1.08
NOMINAL POWER (W)	7.5	LOR (%)	100.0	S/MH (C90/270)	1.08
RATED VOLTAGE (V)	230	TOTAL FLUX (lm)	776.29	η UP, DN (C0-180)	0.9,49.9
NOMINAL FLUX (lm)	776.285	CIE CLASS	DIRECT	η UP, DN (C180-360)	0.9,48.4
LAMPS INSIDE	1	η up (%)	1.7	CIBSE SHR NOM	1.00
TEST VOLTAGE (V)	230	η down (%)	98.3	CIBSE SHR MAX	1.15



C Range: 0 - 360DEG
 C Interval: 22.5DEG
 Test Speed: HIGH
 Temperature:25.3°C
 Operators:DAMIN
 Test Date:2024-02-02

γ Range: 0 - 180DEG
 γ Interval: 1.0DEG
 Test System:EVERFINE GO-2000A_V1 SYSTEM V2.00.471
 Humidity:65.0%
 Test Distance:12.020m [K=1.0000]
 Remarks:

ZONAL FLUX DIAGRAM

ZONAL FLUX DIAGRAM:

γ	C0	C45	C90	C135	C180	C225	C270	C315	γ	Φ zone	Φ total	%lum,lamp
10	372.9	372.4	371.9	370.9	371.9	370.3	369.0	368.4	0- 10	36.02	36.02	4.64,4.64
20	334.2	334.2	333.7	332.4	331.6	329.6	328.3	328.3	10- 20	99.44	135.5	17.5,17.5
30	275.9	276.4	276.1	274.4	272.0	270.1	268.9	269.6	20- 30	139.5	275.0	35.4,35.4
40	209.0	209.5	209.3	207.5	204.3	202.7	202.1	203.1	30- 40	149.5	424.5	54.7,54.7
50	145.1	145.6	145.3	143.5	140.3	139.3	139.0	140.1	40- 50	133.5	558.1	71.9,71.9
60	90.80	91.13	90.84	89.33	86.43	85.82	86.08	87.12	50- 60	102.1	660.2	85,85
70	47.68	47.89	47.53	46.25	43.87	43.51	43.98	45.05	60- 70	65.34	725.5	93.5,93.5
80	16.22	15.70	16.19	14.81	13.81	13.35	14.14	14.06	70- 80	30.68	756.2	97.4,97.4
90	0.5448	0.5360	0.4931	0.3966	0.3754	0.3943	0.3850	0.3660	80- 90	6.500	762.7	98.3,98.3
100	0.6842	0.6740	0.6565	0.6750	0.7318	0.7227	0.7228	0.6946	90-100	0.5614	763.3	98.3,98.3
110	1.200	1.181	1.191	1.191	1.220	1.230	1.220	1.201	100-110	0.9865	764.2	98.4,98.4
120	1.847	1.828	1.829	1.829	1.876	1.866	1.867	1.829	110-120	1.498	765.7	98.6,98.6
130	2.624	2.569	2.579	2.588	2.608	2.598	2.598	2.561	120-130	1.978	767.7	98.9,98.9
140	3.384	3.348	3.339	3.347	3.387	3.368	3.359	3.311	130-140	2.294	770.0	99.2,99.2
150	4.107	4.051	4.051	4.070	4.127	4.108	4.090	4.034	140-150	2.328	772.3	99.5,99.5
160	4.717	4.680	4.698	4.689	4.755	4.755	4.718	4.681	150-160	2.029	774.4	99.8,99.8
170	5.214	5.177	5.205	5.167	5.262	5.253	5.243	5.196	160-170	1.402	775.8	99.9,99.9
180	5.412	5.412	5.421	5.412	5.412	5.430	5.421	5.421	170-180	0.5073	776.3	100,100
DEG	LUMINOUS INTENSITY:cd									UNIT:lm		

Conical surface Flux(90deg): 494.53 lm

%lum = 63.7%

%lamp = 63.7%

Conical surface Flux(120deg): 660.18 lm

%lum = 85.0%

%lamp = 85.0%

0 - 45 DEG Zonal Flux:494.53 %lum: 63.7%

0 - 60 DEG Zonal Flux:660.18 %lum: 85.0%

All measured values may vary less than 35 %

from the average measured value in the 0 to 130 deg. zone: 12.2%

All measured values in the 0 to 130 deg. zone

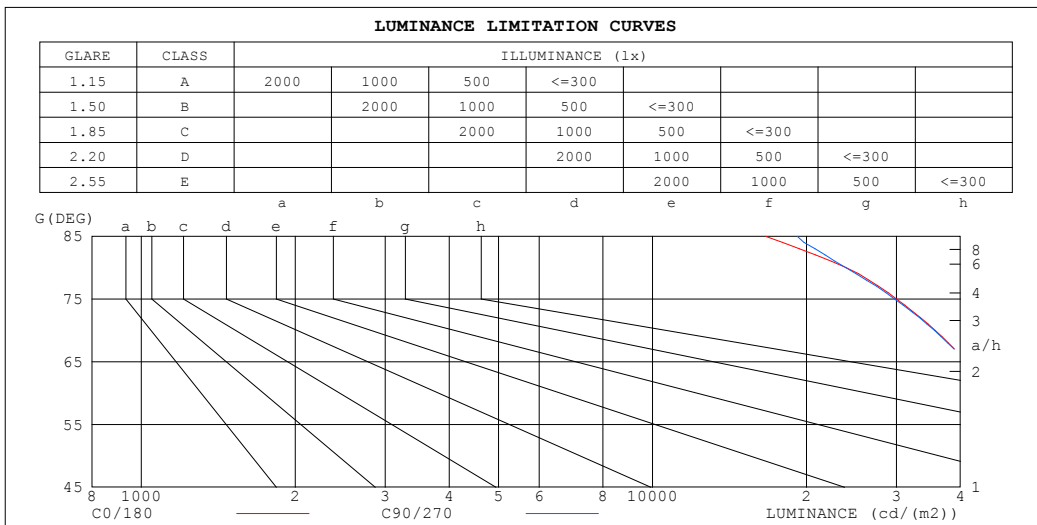
may vary less than 50% from the average value of itself: 17.7%

C Range: 0 - 360DEG
 C Interval: 22.5DEG
 Test Speed: HIGH
 Temperature:25.3°C
 Operators:DAMIN
 Test Date:2024-02-02

γ Range: 0 - 180DEG
 γ Interval: 1.0DEG
 Test System:EVERFINE GO-2000A_V1 SYSTEM V2.00.471
 Humidity:65.0%
 Test Distance:12.020m [K=1.0000]
 Remarks:

LUMINANCE LIMITATION CURVES

Test:U:230.74V I:0.0357A P:7.5736W PF:0.9192 Freq:50.00Hz Lamp Flux:776.285x1 lm		
NAME: R771 XW34A (3000K)	TYPE:	WEIGHT:
SPEC.:	DIM.:	SERIAL No.:
MFR.: EVERFINE	SUR.:	Shielding Angle:



LUMINANCE cd/ (m2)		
G (DEG)	C0/180	C90/270
85	16641	19189
80	23926	23882
75	29993	29752
70	35714	35598
65	41130	41084
60	46520	46542
55	52021	52103
50	57810	57912
45	63778	63905

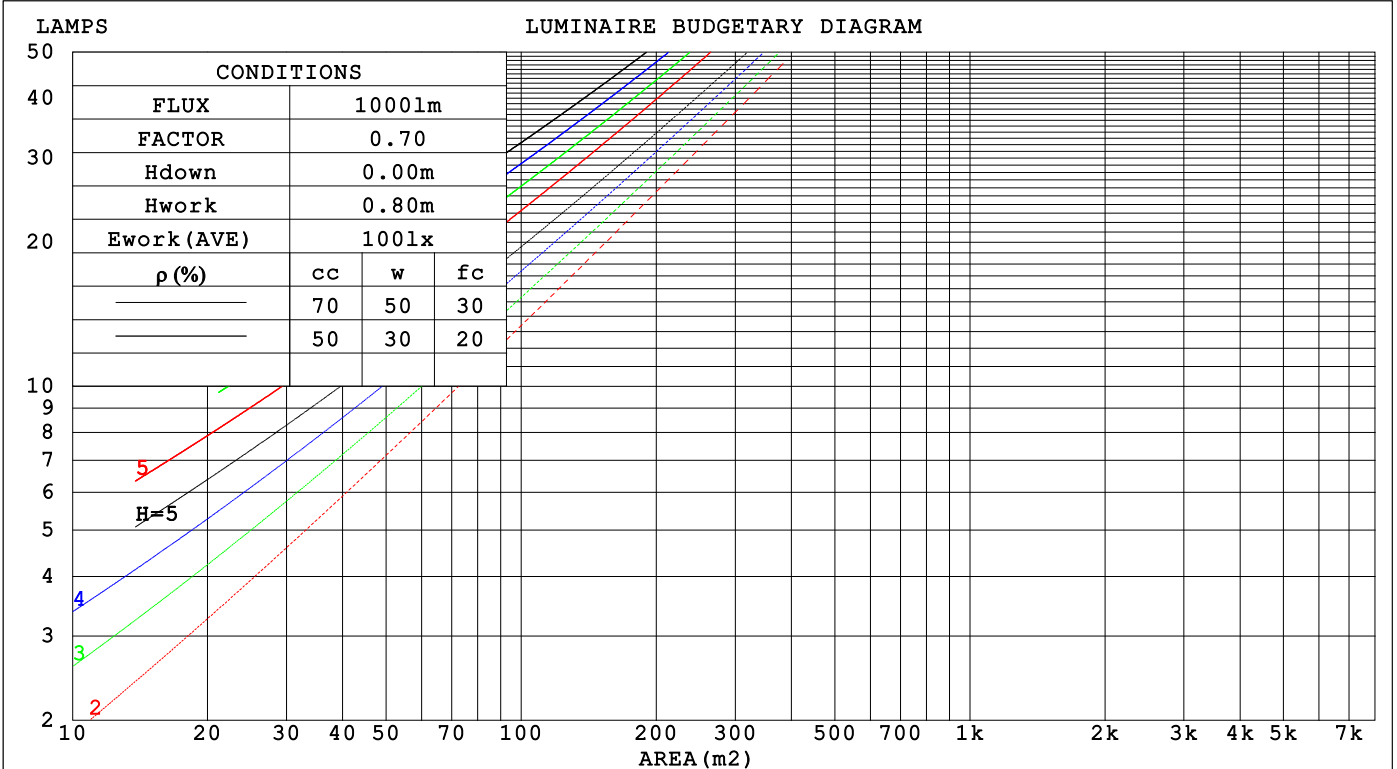
C Range: 0 - 360DEG
 C Interval: 22.5DEG
 Test Speed: HIGH
 Temperature:25.3°C
 Operators:DAMIN
 Test Date:2024-02-02

γ Range: 0 - 180DEG
 γ Interval: 1.0DEG
 Test System:EVERFINE GO-2000A_V1 SYSTEM V2.00.471
 Humidity:65.0%
 Test Distance:12.020m [K=1.0000]
 Remarks:

CU AND LUMINAIRE BUDGETARY ESTIMATE DIAGRAM

Test:U:230.74V I:0.0357A P:7.5736W PF:0.9192 Freq:50.00Hz Lamp Flux:776.285x1 lm		
NAME: R771 XW34A (3000K)	TYPE:	WEIGHT:
SPEC.:	DIM.:	SERIAL No.:
MFR.: EVERFINE	SUR.:	Shielding Angle:

pcc	80%			70%			50%			30%			10%			0
pw	50%	30%	10%	50%	30%	10%	50%	30%	10%	50%	30%	10%	50%	30%	10%	0
pfc	20%			20%			20%			20%			20%			0
RCR	RCR:Room Cavity Ratio						Coefficients of Utilization(CU)									
0.0	1.19	1.19	1.19	1.16	1.16	1.16	1.10	1.10	1.10	1.05	1.05	1.05	1.00	1.00	1.00	.98
1.0	1.06	1.02	.99	1.03	.90	.97	.99	.96	.94	.95	.92	.90	.91	.89	.87	.85
2.0	.94	.88	.83	.92	.86	.82	.88	.83	.80	.85	.81	.77	.81	.78	.76	.73
3.0	.84	.76	.71	.82	.75	.70	.79	.73	.68	.76	.71	.67	.73	.69	.66	.64
4.0	.75	.67	.61	.74	.66	.61	.71	.65	.60	.69	.63	.59	.66	.62	.58	.56
5.0	.68	.60	.54	.67	.59	.53	.64	.58	.52	.62	.56	.52	.60	.55	.51	.49
6.0	.62	.53	.47	.61	.53	.47	.59	.52	.47	.57	.51	.46	.55	.50	.46	.44
7.0	.56	.48	.43	.55	.48	.42	.54	.47	.42	.52	.46	.42	.51	.45	.41	.39
8.0	.52	.44	.38	.51	.43	.38	.50	.43	.38	.48	.42	.38	.47	.41	.37	.35
9.0	.48	.40	.35	.47	.40	.35	.46	.39	.35	.45	.39	.34	.44	.38	.34	.32
10.0	.44	.37	.32	.44	.37	.32	.43	.36	.32	.42	.36	.31	.41	.35	.31	.30



C Range: 0 - 360DEG
 C Interval: 22.5DEG
 Test Speed: HIGH
 Temperature:25.3°C
 Operators:DAMIN
 Test Date:2024-02-02

γ Range: 0 - 180DEG
 γ Interval: 1.0DEG
 Test System:EVERFINE GO-2000A_V1 SYSTEM V2.00.471
 Humidity:65.0%
 Test Distance:12.020m [K=1.0000]
 Remarks:

WEC AND CCEC

Test:U:230.74V I:0.0357A P:7.5736W PF:0.9192 Freq:50.00Hz								
Lamp Flux:776.285x1 lm								
NAME: R771 XW34A (3000K)			TYPE:			WEIGHT:		
SPEC.:			DIM.:			SERIAL No.:		
MFR.: EVERFINE			SUR.:			Shielding Angle:		

ρ_{CC}	80%			70%			50%			30%			10%			0
ρ_w	50%	30%	10%	50%	30%	10%	50%	30%	10%	50%	30%	10%	50%	30%	10%	0
ρ_{fc}	20%			20%			20%			20%			20%			0
RCR	RCR:Room Cavity Ratio						Wall Exitance Coefficients(WEC)									
0.0																
1.0	.266	.151	.048	.259	.148	.047	.245	.140	.045	.232	.134	.043	.220	.128	.041	
2.0	.255	.140	.043	.249	.137	.042	.236	.131	.041	.225	.126	.040	.215	.121	.038	
3.0	.240	.128	.038	.234	.125	.038	.223	.121	.037	.213	.117	.036	.204	.113	.035	
4.0	.224	.116	.034	.219	.114	.034	.209	.111	.033	.200	.108	.032	.192	.104	.032	
5.0	.209	.107	.031	.205	.105	.031	.196	.102	.030	.188	.099	.030	.181	.097	.029	
6.0	.196	.098	.028	.192	.097	.028	.184	.094	.027	.177	.092	.027	.170	.090	.027	
7.0	.183	.091	.026	.180	.090	.026	.173	.087	.025	.166	.085	.025	.160	.083	.025	
8.0	.172	.084	.024	.169	.083	.024	.163	.081	.023	.157	.080	.023	.152	.078	.023	
9.0	.162	.079	.022	.160	.078	.022	.154	.076	.022	.149	.075	.021	.144	.073	.021	
10.0	.153	.074	.020	.151	.073	.020	.146	.071	.020	.141	.070	.020	.136	.069	.020	

ρ_{CC}	80%			70%			50%			30%			10%			0
ρ_w	50%	30%	10%	50%	30%	10%	50%	30%	10%	50%	30%	10%	50%	30%	10%	0
ρ_{fc}	20%			20%			20%			20%			20%			0
RCR	RCR:Room Cavity Ratio						Ceiling Cavity Exitance Coefficients(CCEC)									
0.0	.204	.204	.204	.174	.174	.174	.119	.119	.119	.068	.068	.068	.022	.022	.022	
1.0	.191	.170	.151	.163	.146	.130	.112	.100	.090	.064	.058	.052	.021	.019	.017	
2.0	.181	.146	.116	.155	.125	.100	.106	.087	.070	.061	.050	.041	.020	.016	.013	
3.0	.172	.128	.092	.148	.110	.080	.101	.077	.056	.059	.045	.033	.019	.015	.011	
4.0	.164	.114	.076	.141	.099	.066	.097	.069	.046	.056	.040	.027	.018	.013	.009	
5.0	.157	.103	.064	.135	.090	.056	.093	.063	.039	.054	.037	.023	.017	.012	.008	
6.0	.150	.095	.055	.129	.082	.048	.089	.058	.034	.052	.034	.020	.017	.011	.007	
7.0	.143	.088	.049	.123	.076	.043	.085	.053	.030	.050	.031	.018	.016	.010	.006	
8.0	.137	.082	.044	.118	.071	.039	.082	.050	.027	.048	.029	.016	.015	.010	.005	
9.0	.132	.077	.040	.113	.067	.035	.079	.047	.025	.046	.028	.015	.015	.009	.005	
10.0	.126	.073	.037	.109	.063	.033	.076	.045	.023	.044	.026	.014	.014	.009	.005	

C Range: 0 - 360DEG
 C Interval: 22.5DEG
 Test Speed: HIGH
 Temperature:25.3°C
 Operators:DAMIN
 Test Date:2024-02-02

γ Range: 0 - 180DEG
 γ Interval: 1.0DEG
 Test System:EVERFINE GO-2000A_V1 SYSTEM V2.00.471
 Humidity:65.0%
 Test Distance:12.020m [K=1.0000]
 Remarks:

UGR(Unified Glare Rating) Table

Test:U:230.74V I:0.0357A P:7.5736W PF:0.9192 Freq:50.00Hz										
Lamp Flux:776.285x1 lm										
NAME: R771 XW34A (3000K)					TYPE:			WEIGHT:		
SPEC.:					DIM.:			SERIAL No.:		
MFR.: EVERFINE					SUR.:			Shielding Angle:		
ceiling/cavity	0.7	0.7	0.5	0.5	0.3	0.7	0.7	0.5	0.5	0.3
walls	0.5	0.3	0.5	0.3	0.3	0.5	0.3	0.5	0.3	0.3
working plane	0.2	0.2	0.2	0.2	0.2	0.2	0.2	0.2	0.2	0.2
Room dimensions	Viewed crosswise					Viewed endwise				
x = 2H y = 2H	26.1	27.4	26.4	27.6	27.9	26.1	27.4	26.4	27.7	27.9
3H	27.0	28.3	27.3	28.5	28.8	27.0	28.3	27.4	28.5	28.8
4H	27.4	28.5	27.7	28.8	29.1	27.4	28.5	27.7	28.8	29.1
6H	27.5	28.7	27.9	28.9	29.3	27.5	28.7	27.9	29.0	29.3
8H	27.6	28.6	27.9	29.0	29.3	27.6	28.7	27.9	29.0	29.3
12H	27.6	28.6	27.9	28.9	29.3	27.6	28.6	28.0	28.9	29.3
4H 2H	26.5	27.7	26.8	27.9	28.2	26.5	27.7	26.8	27.9	28.2
3H	27.6	28.6	28.0	29.0	29.3	27.6	28.6	28.0	29.0	29.3
4H	28.0	29.0	28.4	29.3	29.7	28.0	29.0	28.4	29.3	29.7
6H	28.3	29.1	28.7	29.5	29.9	28.3	29.1	28.7	29.5	29.9
8H	28.4	29.1	28.8	29.5	29.9	28.4	29.2	28.8	29.6	30.0
12H	28.4	29.1	28.8	29.5	29.9	28.4	29.1	28.9	29.5	30.0
8H 4H	28.2	28.9	28.6	29.3	29.7	28.2	28.9	28.6	29.3	29.7
6H	28.5	29.2	29.0	29.6	30.0	28.5	29.2	29.0	29.6	30.1
8H	28.6	29.2	29.1	29.6	30.1	28.7	29.2	29.2	29.7	30.2
12H	28.7	29.2	29.2	29.6	30.2	28.8	29.2	29.3	29.7	30.2
12H 4H	28.1	28.8	28.6	29.3	29.7	28.1	28.8	28.6	29.3	29.7
6H	28.5	29.1	29.0	29.5	30.0	28.6	29.1	29.0	29.6	30.0
8H	28.7	29.1	29.2	29.6	30.1	28.7	29.2	29.2	29.7	30.2
Variations with the observer position at spacings(CIE Pub.117):										
S = 1.0H	+ 0.3 / - 0.4					+ 0.3 / - 0.4				
1.5H	+ 0.1 / - 0.2					+ 0.1 / - 0.2				
2.0H	+ 0.5 / - 0.5					+ 0.5 / - 0.5				

CIE Pub.117, 776.3 lm Total Lamp Luminous Flux Corrected (8log(F/F0) = -0.9)
 Area: 0.0039036 m2

C Range: 0 - 360DEG
 C Interval: 22.5DEG
 Test Speed: HIGH
 Temperature:25.3°C
 Operators:DAMIN
 Test Date:2024-02-02

γ Range: 0 - 180DEG
 γ Interval: 1.0DEG
 Test System:EVERFINE GO-2000A_V1 SYSTEM V2.00.471
 Humidity:65.0%
 Test Distance:12.020m [K=1.0000]
 Remarks:

UTILIZATION FACTORS TABLE

Test:U:230.74V I:0.0357A P:7.5736W PF:0.9192 Freq:50.00Hz Lamp Flux:776.285x1 lm		
NAME: R771 XW34A (3000K)	TYPE:	WEIGHT:
SPEC.:	DIM.:	SERIAL No.:
MFR.: EVERFINE	SUR.:	Shielding Angle:

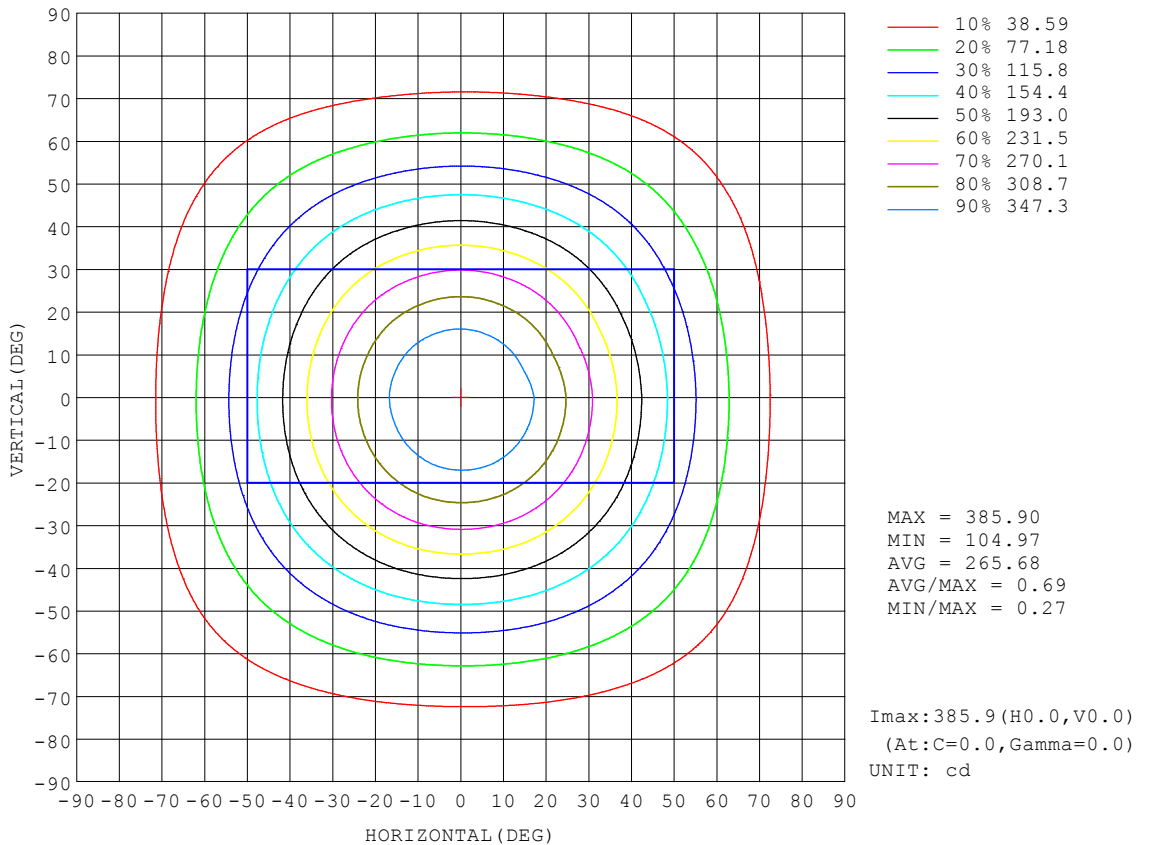
REFLECTANCE										
Ceiling	0.8	0.8	0.8	0.7	0.7	0.7	0.5	0.5	0.5	0
Walls	0.7	0.5	0.3	0.7	0.5	0.3	0.7	0.5	0.3	0
Working plane	0.2	0.2	0.2	0.2	0.2	0.2	0.2	0.2	0.2	0
ROOM INDEX	UTILIZATION FACTORS (PERCENT) $k(RI) \times RCR = 5$									
k = 0.60	63	53	47	63	53	46	61	52	46	40
0.80	73	63	56	72	62	56	70	62	56	49
1.00	81	71	65	80	71	65	78	72	64	57
1.25	88	79	72	86	78	72	84	76	71	64
1.50	92	84	78	91	83	77	88	81	76	69
2.00	98	91	85	96	90	85	93	87	83	75
2.50	102	95	90	100	93	89	96	91	87	79
3.00	105	99	94	102	97	93	98	94	90	82
4.00	108	103	99	105	101	98	101	98	95	86
5.00	110	106	102	107	104	101	103	100	97	88
ROOM INDEX	UF(total)									Direct
According to DIN EN 13032-2 2004			Suspended				SHRNOM = 1.25			

C Range: 0 - 360DEG
 C Interval: 22.5DEG
 Test Speed: HIGH
 Temperature:25.3°C
 Operators:DAMIN
 Test Date:2024-02-02

γ Range: 0 - 180DEG
 γ Interval: 1.0DEG
 Test System:EVERFINE GO-2000A_V1 SYSTEM V2.00.471
 Humidity:65.0%
 Test Distance:12.020m [K=1.0000]
 Remarks:

ISOCANDELA DIAGRAM

Test:U:230.74V I:0.0357A P:7.5736W PF:0.9192 Freq:50.00Hz Lamp Flux:776.285x1 lm		
NAME: R771 XW34A (3000K)	TYPE:	WEIGHT:
SPEC.:	DIM.:	SERIAL No.:
MFR.: EVERFINE	SUR.:	Shielding Angle:

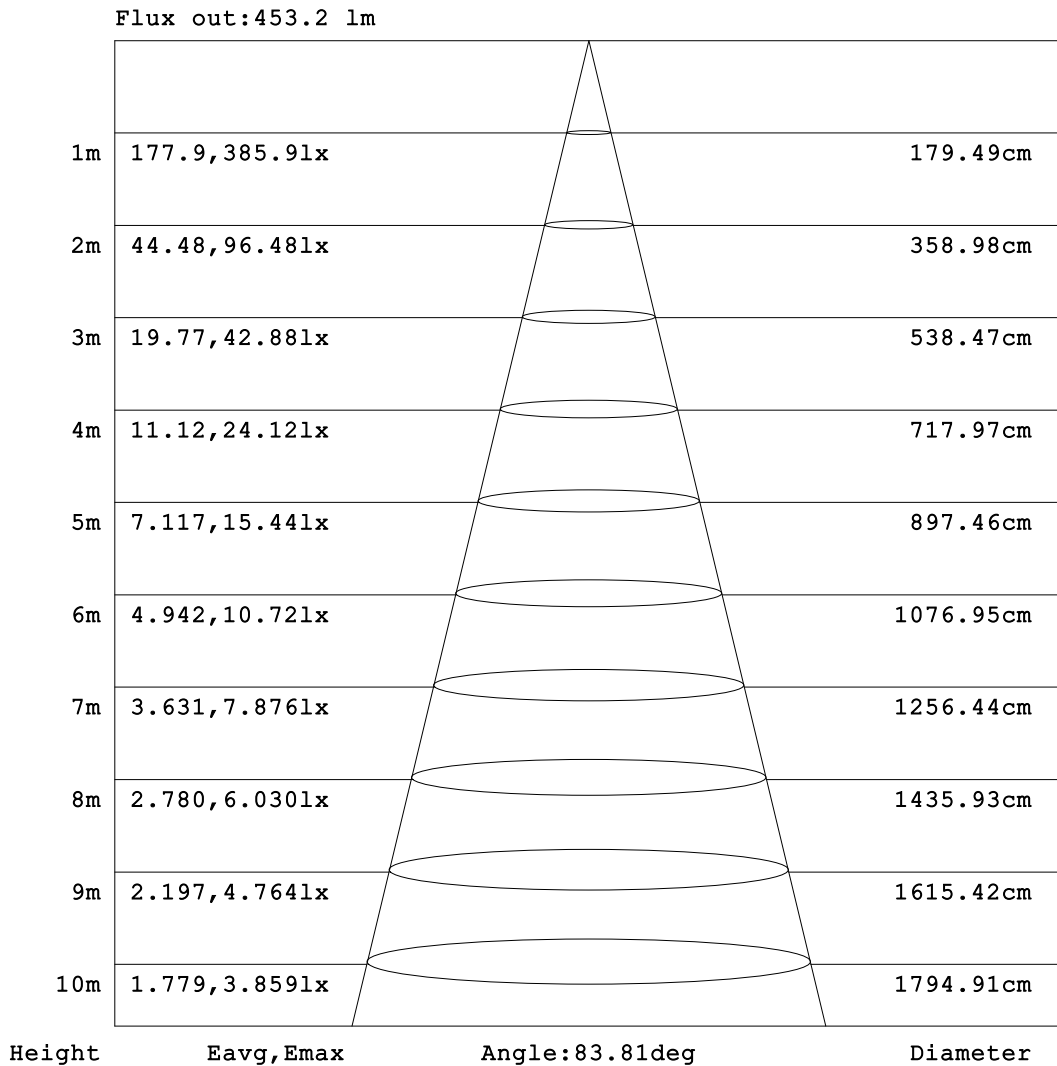


C Range: 0 - 360DEG
 C Interval: 22.5DEG
 Test Speed: HIGH
 Temperature:25.3°C
 Operators:DAMIN
 Test Date:2024-02-02

γ Range: 0 - 180DEG
 γ Interval: 1.0DEG
 Test System:EVERFINE GO-2000A_V1 SYSTEM V2.00.471
 Humidity:65.0%
 Test Distance:12.020m [K=1.0000]
 Remarks:

AAI Figure

Test:U:230.74V I:0.0357A P:7.5736W PF:0.9192 Freq:50.00Hz Lamp Flux:776.285x1 lm		
NAME: R771 XW34A (3000K)	TYPE:	WEIGHT:
SPEC.:	DIM.:	SERIAL No.:
MFR.: EVERFINE	SUR.:	Shielding Angle:



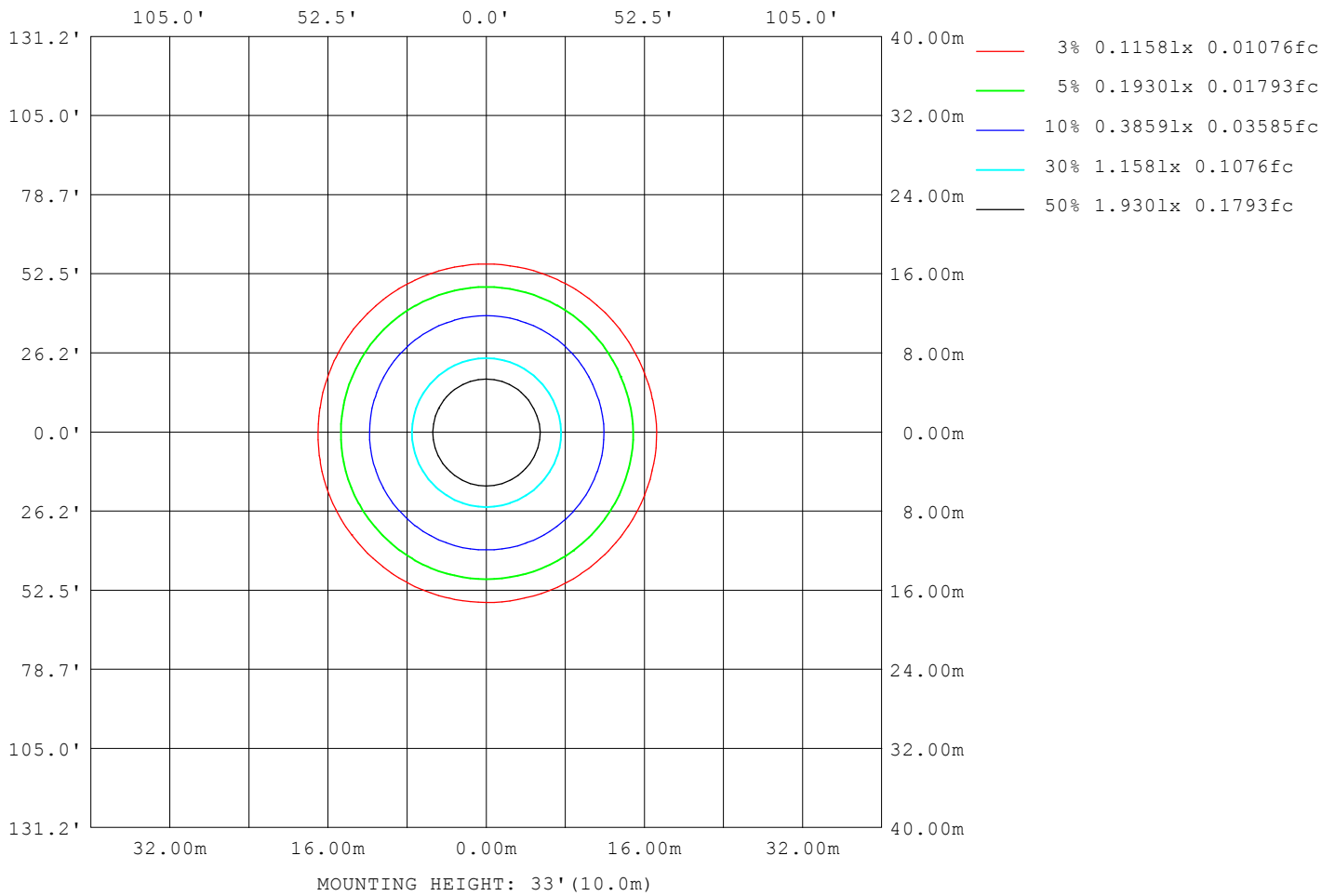
Note:The Curves indicate the illuminated area and the average illumination when the luminaire is at different distance.

C Range: 0 - 360DEG
C Interval: 22.5DEG
Test Speed: HIGH
Temperature:25.3°C
Operators:DAMIN
Test Date:2024-02-02

γ Range: 0 - 180DEG
γ Interval: 1.0DEG
Test System:EVERFINE GO-2000A_V1 SYSTEM V2.00.471
Humidity:65.0%
Test Distance:12.020m [K=1.0000]
Remarks:

ISOLUX DIAGRAM

Test:U:230.74V I:0.0357A P:7.5736W PF:0.9192 Freq:50.00Hz Lamp Flux:776.285x1 lm		
NAME: R771 XW34A (3000K)	TYPE:	WEIGHT:
SPEC.:	DIM.:	SERIAL No.:
MFR.: EVERFINE	SUR.:	Shielding Angle:



C Range: 0 - 360DEG
 C Interval: 22.5DEG
 Test Speed: HIGH
 Temperature:25.3°C
 Operators:DAMIN
 Test Date:2024-02-02

γ Range: 0 - 180DEG
 γ Interval: 1.0DEG
 Test System:EVERFINE GO-2000A_V1 SYSTEM V2.00.471
 Humidity:65.0%
 Test Distance:12.020m [K=1.0000]
 Remarks:

LED Avg.L Report

Test:U:230.74V I:0.0357A P:7.5736W PF:0.9192 Freq:50.00Hz Lamp Flux:776.285x1 lm		
NAME: R771 XW34A (3000K)	TYPE:	WEIGHT:
SPEC.:	DIM.:	SERIAL No.:
MFR.: EVERFINE	SUR.:	Shielding Angle:

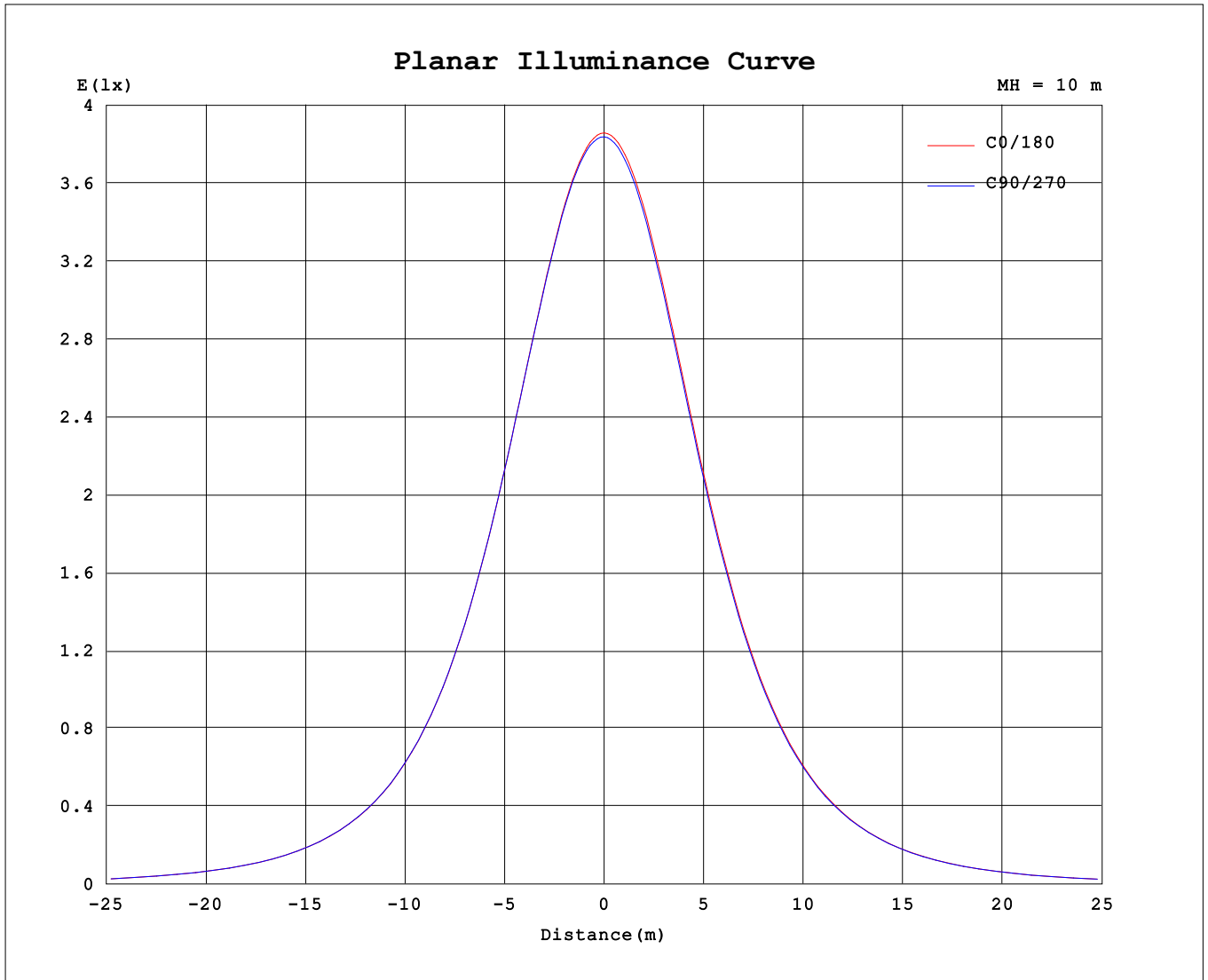
AvgL	cd/m2
L_0~180 (65) av	39883
L_0~180 (75) av	28365
L_0~180 (85) av	14813
L_90~270 (65) av	39825
L_90~270 (75) av	28367
L_90~270 (85) av	17434
L_45 (65) av	39756
L_45 (75) av	28261
L_45 (85) av	14122

Standard: GB/T 29293-2012

C Range: 0 - 360DEG
 C Interval: 22.5DEG
 Test Speed: HIGH
 Temperature:25.3°C
 Operators:DAMIN
 Test Date:2024-02-02

γ Range: 0 - 180DEG
 γ Interval: 1.0DEG
 Test System:EVERFINE GO-2000A_V1 SYSTEM V2.00.471
 Humidity:65.0%
 Test Distance:12.020m [K=1.0000]
 Remarks:

Planar Illuminance Curve



C Range: 0 - 360DEG
 C Interval: 22.5DEG
 Test Speed: HIGH
 Temperature: 25.3°C
 Operators: DAMIN
 Test Date: 2024-02-02

γ Range: 0 - 180DEG
 γ Interval: 1.0DEG
 Test System: EVERFINE GO-2000A_V1 SYSTEM V2.00.471
 Humidity: 65.0%
 Test Distance: 12.020m [K=1.0000]
 Remarks:

LUMINOUS DISTRIBUTION INTENSITY DATA

Test:U:230.74V I:0.0357A P:7.5736W PF:0.9192 Freq:50.00Hz Lamp Flux:776.285x1 lm		
NAME: R771 XW34A (3000K)	TYPE:	WEIGHT:
SPEC.:	DIM.:	SERIAL No.:
MFR.: EVERFINE	SUR.:	Shielding Angle:

Table--1

UNIT: cd

C (DEG) \ γ (DEG)	0	22.5	45	67.5	90	112.5	135	157.5	180	202.5	225	247.5	270	292.5	315	337.5			
0	386	385	385	384	384	383	383	383	386	385	385	384	384	383	383	383			
5	383	382	382	381	381	381	380	380	382	381	381	380	380	379	379	379			
10	373	373	372	372	372	371	371	370	372	371	370	369	369	368	368	368			
15	356	356	356	356	356	355	355	354	355	353	353	352	352	351	351	351			
20	334	334	334	334	334	333	332	332	332	330	330	328	328	328	328	329			
25	307	307	307	307	307	307	305	304	304	302	302	300	300	300	301	301			
30	276	276	276	277	276	276	274	273	272	271	270	269	269	269	270	270			
35	243	243	243	244	243	243	241	240	238	237	237	236	236	236	237	237			
40	209	210	210	210	209	209	208	206	204	203	203	202	202	202	203	203			
45	176	177	177	177	176	176	175	173	171	170	170	169	170	170	171	171			
50	145	146	146	146	145	145	144	143	140	139	139	139	139	139	140	141			
55	116	117	117	117	117	116	115	114	112	111	111	111	111	111	112	113			
60	90.8	91.1	91.1	91.4	90.8	90.5	89.3	88.5	86.4	85.7	85.8	85.5	86.1	86.2	87.1	87.5			
65	67.9	68.1	68.1	68.3	67.8	67.4	66.4	65.6	63.7	63.2	63.2	63.1	63.6	63.9	64.7	65.1			
70	47.7	47.9	47.9	47.9	47.5	47.1	46.2	45.6	43.9	43.3	43.5	43.4	44.0	44.3	45.1	45.4			
75	30.3	30.4	30.4	30.5	30.1	29.8	29.0	28.5	27.0	26.6	26.7	26.7	27.3	27.5	28.1	28.4			
80	16.2	15.6	15.7	16.5	16.2	15.9	14.8	14.5	13.8	13.3	13.3	13.8	14.1	14.4	14.1	14.2			
85	5.66	5.48	5.48	6.55	6.53	6.13	5.00	4.79	4.42	4.01	4.23	4.92	5.33	5.11	4.50	4.57			
90	0.54	0.44	0.54	0.61	0.49	0.40	0.40	0.41	0.38	0.36	0.39	0.38	0.38	0.37	0.37	0.37			
95	0.45	0.54	0.47	0.54	0.46	0.57	0.46	0.56	0.54	0.45	0.54	0.44	0.54	0.43	0.53	0.44			
100	0.68	0.75	0.67	0.75	0.66	0.76	0.68	0.77	0.73	0.63	0.72	0.64	0.72	0.63	0.69	0.60			
105	0.90	0.99	0.90	0.98	0.89	1.00	0.90	1.00	0.96	0.85	0.97	0.88	0.97	0.88	0.94	0.83			
110	1.20	1.27	1.18	1.28	1.19	1.28	1.19	1.29	1.22	1.13	1.23	1.14	1.22	1.11	1.20	1.10			
115	1.50	1.59	1.49	1.58	1.48	1.60	1.49	1.60	1.54	1.44	1.53	1.44	1.52	1.42	1.50	1.39			
120	1.85	1.91	1.83	1.91	1.83	1.91	1.83	1.94	1.88	1.80	1.87	1.78	1.87	1.76	1.83	1.72			
125	2.24	2.30	2.20	2.28	2.21	2.30	2.22	2.32	2.22	2.12	2.22	2.13	2.21	2.10	2.18	2.09			
130	2.62	2.68	2.57	2.67	2.58	2.67	2.59	2.68	2.61	2.52	2.60	2.55	2.60	2.48	2.56	2.46			
135	3.00	3.08	2.96	3.06	2.98	3.06	2.99	3.09	2.99	2.90	3.00	2.89	2.99	2.86	2.94	2.85			
140	3.38	3.43	3.35	3.42	3.34	3.44	3.35	3.45	3.39	3.29	3.37	3.29	3.36	3.25	3.31	3.21			
145	3.76	3.82	3.72	3.80	3.72	3.82	3.75	3.84	3.76	3.64	3.74	3.64	3.73	3.60	3.70	3.58			
150	4.11	4.18	4.05	4.14	4.05	4.16	4.07	4.17	4.13	4.01	4.11	4.02	4.09	3.96	4.03	3.94			
155	4.43	4.51	4.37	4.47	4.37	4.49	4.39	4.50	4.46	4.34	4.43	4.34	4.40	4.30	4.37	4.28			
160	4.72	4.81	4.68	4.77	4.70	4.79	4.69	4.81	4.76	4.67	4.76	4.64	4.72	4.65	4.68	4.60			
165	4.97	5.07	4.95	5.03	4.95	5.04	4.95	5.06	5.03	4.94	5.02	4.94	5.01	4.88	4.97	4.87			
170	5.21	5.28	5.18	5.25	5.20	5.25	5.17	5.25	5.26	5.17	5.25	5.14	5.24	5.11	5.20	5.08			
175	5.37	5.46	5.36	5.41	5.36	5.41	5.30	5.38	5.41	5.34	5.43	5.32	5.42	5.30	5.38	5.26			
180	5.41	5.45	5.41	5.41	5.42	5.42	5.41	5.42	5.41	5.41	5.43	5.39	5.42	5.41	5.42	5.40			

C Range: 0 - 360DEG
 C Interval: 22.5DEG
 Test Speed: HIGH
 Temperature:25.3°C
 Operators:DAMIN
 Test Date:2024-02-02

γ Range: 0 - 180DEG
 γ Interval: 1.0DEG
 Test System:EVERFINE GO-2000A_V1 SYSTEM V2.00.471
 Humidity:65.0%
 Test Distance:12.020m [K=1.0000]
 Remarks: