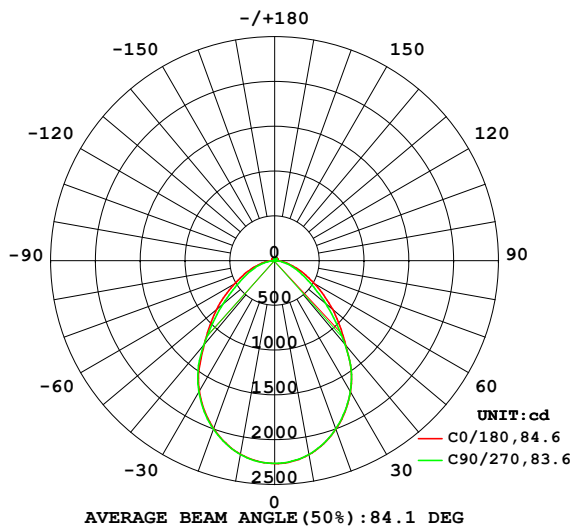


## LUMINAIRE PHOTOMETRIC TEST REPORT

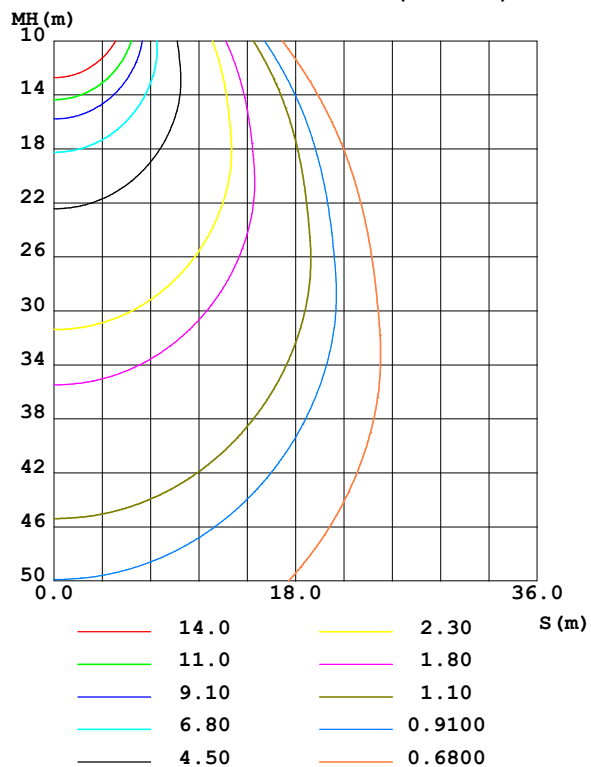
Test:U:230.65V I:0.1794A P:39.764W PF:0.9609 Freq:50.00Hz Lamp Flux:4640.7x1 lm		
NAME: LED612-W34KA-D (40W 1050mA 3000K)	TYPE:	WEIGHT:
SPEC.:	DIM.: 0.3363	SERIAL No.:
MFR.:	SUR.:	Shielding Angle:

DATA OF LAMP		PHOTOMETRIC DATA				Eff: 116.71 lm/W
MODEL		I <sub>max</sub> (cd)	2265	S/MH(C0/180)	1.12	
NOMINAL POWER(W)	39.8	LOR(%)	100.0	S/MH(C90/270)	1.13	
RATED VOLTAGE(V)	230	TOTAL FLUX(lm)	4640.7	η UP,DN(C0-180)	1.6,48.3	
NOMINAL FLUX(lm)	4640.7	CIE CLASS	DIRECT	η UP,DN(C180-360)	1.7,48.4	
LAMPS INSIDE	1	η up (%)	3.3	CIBSE SHR NOM	1.00	
TEST VOLTAGE(V)	230	η down (%)	96.7	CIBSE SHR MAX	1.15	

LUMINOUS INTENSITY DISTRIBUTION DIAGRAM



C0 PLANE ISOLUX DIAGRAM (UNIT:lx)



C Range: 0 - 360DEG  
C Interval: 22.5DEG  
Test Speed: HIGH  
Temperature:25.3℃  
Operators:DAMIN  
Test Date:2025-05-04

γ Range: 0 - 180DEG  
γ Interval: 1.0DEG  
Test System:EVERFINE GO-2000A\_V1 SYSTEM V2.00.471  
Humidity:65.0%  
Test Distance:12.020m [K=1.0000]  
Remarks:

## ZONAL FLUX DIAGRAM

### ZONAL FLUX DIAGRAM:

$\gamma$	C0	C45	C90	C135	C180	C225	C270	C315	$\gamma$	$\Phi$ zone	$\Phi$ total	%lum
10	2200	2200	2198	2197	2195	2199	2198	2194	0- 10	213.0	213.0	4.59
20	2003	1998	1999	1997	1995	2001	2001	1994	10- 20	594.5	807.4	17.4
30	1694	1687	1690	1684	1682	1690	1694	1680	20- 30	852.7	1660	35.8
40	1239	1231	1226	1216	1224	1232	1237	1214	30- 40	919.1	2579	55.6
50	844.0	799.0	743.6	782.0	845.0	809.7	753.2	776.1	40- 50	767.5	3347	72.1
60	510.9	464.1	416.3	455.7	513.4	471.1	427.6	449.3	50- 60	552.5	3899	84
70	270.9	255.1	225.4	256.5	280.9	262.8	235.4	250.9	60- 70	348.4	4248	91.5
80	110.8	95.89	80.86	107.1	123.9	112.3	85.94	95.61	70- 80	183.9	4432	95.5
90	31.15	19.64	2.654	24.15	38.73	25.96	2.431	18.48	80- 90	55.67	4487	96.7
100	26.00	18.77	4.839	22.07	32.88	23.26	4.449	17.43	90-100	20.38	4508	97.1
110	26.88	20.71	8.388	23.94	33.15	24.88	7.791	19.15	100-110	20.99	4529	97.6
120	28.27	22.46	12.74	25.89	33.07	26.27	12.01	21.04	110-120	21.69	4550	98.1
130	30.42	25.79	17.79	28.93	35.55	29.17	16.93	24.19	120-130	21.95	4572	98.5
140	32.41	28.51	22.63	31.48	36.84	31.65	22.04	27.24	130-140	21.41	4594	99
150	33.95	29.87	27.31	33.58	37.38	33.58	26.80	29.23	140-150	19.00	4613	99.4
160	34.95	31.62	32.17	35.09	37.34	35.03	31.56	31.18	150-160	14.96	4628	99.7
170	34.72	33.87	35.64	35.83	36.13	35.81	35.40	33.47	160-170	9.698	4637	99.9
180	37.43	36.79	37.06	36.82	37.49	36.82	37.09	36.82	170-180	3.419	4641	100
DEG	LUMINOUS INTENSITY:cd									UNIT:lm		

Conical surface Flux(90deg): 2987.5 lm

%lum = 64.4%

%lamp = 64.4%

Conical surface Flux(120deg): 3899.2 lm

%lum = 84.0%

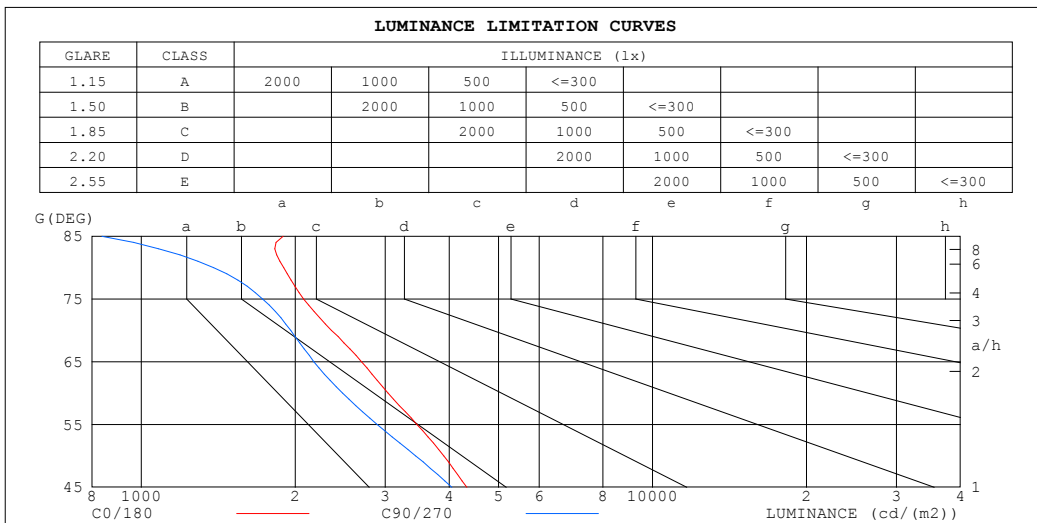
%lamp = 84.0%

C Range: 0 - 360DEG  
C Interval: 22.5DEG  
Test Speed: HIGH  
Temperature:25.3℃  
Operators:DAMIN  
Test Date:2025-05-04

$\gamma$  Range: 0 - 180DEG  
 $\gamma$  Interval: 1.0DEG  
Test System:EVERFINE GO-2000A\_V1 SYSTEM V2.00.471  
Humidity:65.0%  
Test Distance:12.020m [K=1.0000]  
Remarks:

## LUMINANCE LIMITATION CURVES

Test:U:230.65V I:0.1794A P:39.764W PF:0.9609 Freq:50.00Hz Lamp Flux:4640.7x1 lm		
NAME: LED612-W34KA-D (40W 1050mA 3000K)	TYPE:	WEIGHT:
SPEC.:	DIM.: 0.3363	SERIAL No.:
MFR.:	SUR.:	Shielding Angle:



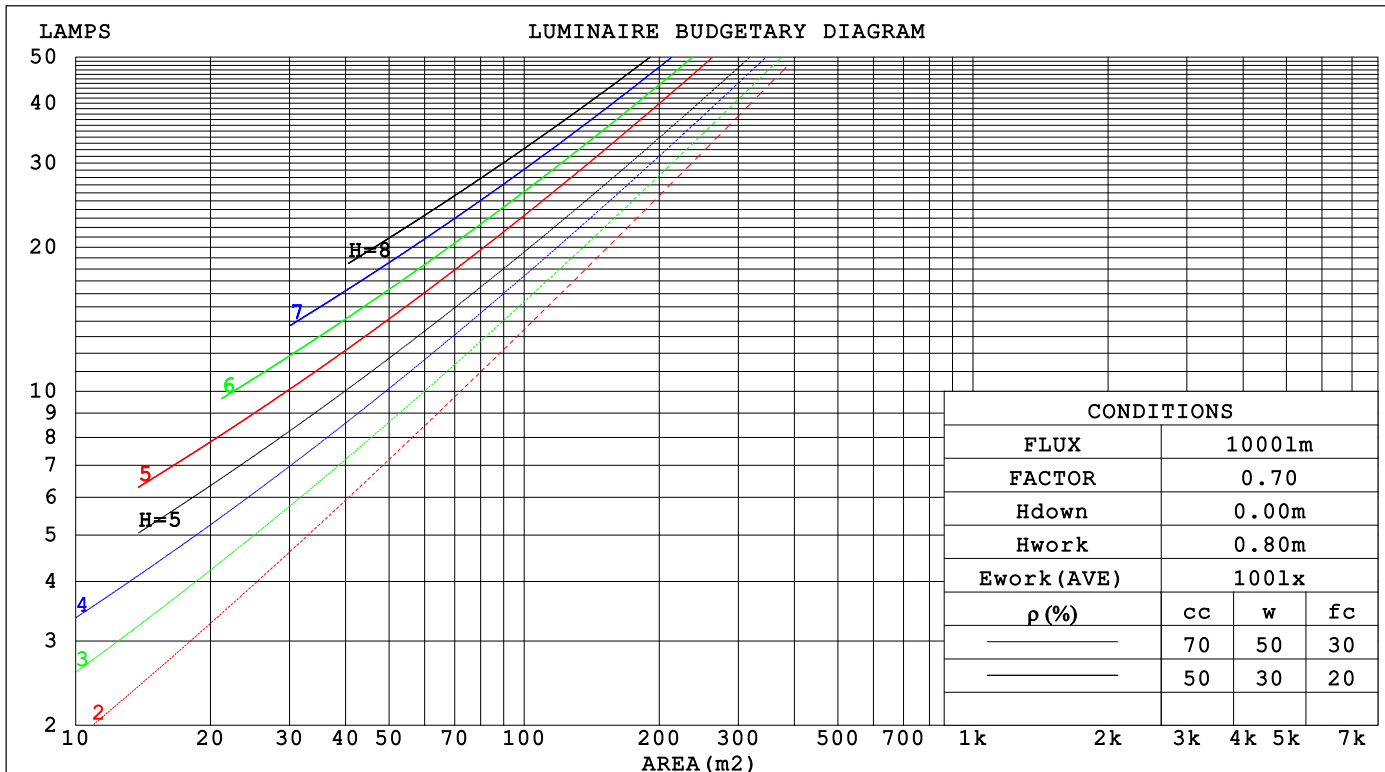
C Range: 0 - 360DEG  
C Interval: 22.5DEG  
Test Speed: HIGH  
Temperature: 25.3°C  
Operators: DAMIN  
Test Date: 2025-05-04

γ Range: 0 - 180DEG  
γ Interval: 1.0DEG  
Test System: EVERFINE GO-2000A\_V1 SYSTEM V2.00.471  
Humidity: 65.0%  
Test Distance: 12.020m [K=1.0000]  
Remarks:

## CU AND LUMINAIRE BUDGETARY ESTIMATE DIAGRAM

Test:U:230.65V I:0.1794A P:39.764W PF:0.9609 Freq:50.00Hz Lamp Flux:4640.7x1 lm		
NAME: LED612-W34KA-D (40W 1050mA 3000K)	TYPE:	WEIGHT:
SPEC.:	DIM.: 0.3363	SERIAL No.:
MFR.:	SUR.:	Shielding Angle:

pcc	80%			70%			50%			30%			10%			0
pw	50%	30%	10%	50%	30%	10%	50%	30%	10%	50%	30%	10%	50%	30%	10%	0
pfc	20%			20%			20%			20%			20%			0
RCR	RCR:Room Cavity Ratio                      Coefficients of Utilization(CU)															
0.0	1.18	1.18	1.18	1.15	1.15	1.15	1.09	1.09	1.09	1.04	1.04	1.04	.99	.99	.99	.97
1.0	1.05	1.02	.98	1.03	.99	.96	.98	.95	.93	.94	.91	.89	.90	.88	.86	.84
2.0	.94	.88	.83	.91	.86	.81	.88	.83	.79	.84	.80	.77	.80	.77	.75	.72
3.0	.84	.76	.71	.82	.75	.70	.79	.73	.68	.75	.71	.67	.73	.69	.65	.63
4.0	.75	.67	.61	.74	.66	.61	.71	.65	.60	.68	.63	.58	.66	.61	.57	.55
5.0	.68	.60	.54	.67	.59	.53	.64	.58	.53	.62	.56	.52	.60	.55	.51	.49
6.0	.62	.54	.48	.61	.53	.48	.59	.52	.47	.57	.51	.46	.55	.50	.46	.44
7.0	.57	.49	.43	.56	.48	.43	.54	.47	.42	.52	.46	.42	.51	.45	.41	.39
8.0	.52	.44	.39	.51	.44	.39	.50	.43	.38	.48	.42	.38	.47	.41	.37	.36
9.0	.48	.40	.35	.47	.40	.35	.46	.39	.35	.45	.39	.34	.44	.38	.34	.32
10.0	.45	.37	.32	.44	.37	.32	.43	.36	.32	.42	.36	.32	.41	.35	.31	.30



C Range: 0 - 360DEG  
C Interval: 22.5DEG  
Test Speed: HIGH  
Temperature:25.3°C  
Operators:DAMIN  
Test Date:2025-05-04

γ Range: 0 - 180DEG  
γ Interval: 1.0DEG  
Test System:EVERFINE GO-2000A\_V1 SYSTEM V2.00.471  
Humidity:65.0%  
Test Distance:12.020m [K=1.0000]  
Remarks:

### WEC AND CCEC

Test:U:230.65V I:0.1794A P:39.764W PF:0.9609 Freq:50.00Hz Lamp Flux:4640.7x1 lm		
NAME: LED612-W34KA-D (40W 1050mA 3000K)	TYPE:	WEIGHT:
SPEC.:	DIM.: 0.3363	SERIAL No.:
MFR.:	SUR.:	Shielding Angle:

pcc	80%			70%			50%			30%			10%			0	
pw	50%	30%	10%	50%	30%	10%	50%	30%	10%	50%	30%	10%	50%	30%	10%	0	
pfc	20%			20%			20%			20%			20%			0	
RCR	RCR:Room Cavity Ratio						Wall Exitance Coefficients(WEC)										
0.0																	
1.0	.267	.152	.048	.259	.148	.047	.244	.140	.045	.230	.133	.043	.218	.126	.041		
2.0	.254	.139	.043	.247	.136	.042	.233	.130	.040	.221	.124	.039	.210	.119	.037		
3.0	.237	.126	.038	.231	.124	.037	.220	.119	.036	.209	.114	.035	.199	.110	.034		
4.0	.221	.115	.034	.216	.113	.033	.206	.109	.033	.196	.105	.032	.187	.102	.031		
5.0	.207	.105	.031	.202	.104	.030	.193	.100	.030	.184	.097	.029	.176	.094	.028		
6.0	.194	.097	.028	.189	.096	.028	.181	.093	.027	.173	.090	.026	.166	.087	.026		
7.0	.182	.090	.025	.178	.088	.025	.170	.086	.025	.163	.084	.024	.157	.081	.024		
8.0	.171	.083	.023	.167	.082	.023	.161	.080	.023	.154	.078	.023	.148	.076	.022		
9.0	.161	.078	.022	.158	.077	.022	.152	.075	.021	.146	.073	.021	.141	.071	.021		
10.0	.152	.073	.020	.149	.072	.020	.144	.070	.020	.139	.069	.020	.134	.067	.019		

pcc	80%			70%			50%			30%			10%			0	
pw	50%	30%	10%	50%	30%	10%	50%	30%	10%	50%	30%	10%	50%	30%	10%	0	
pfc	20%			20%			20%			20%			20%			0	
RCR	RCR:Room Cavity Ratio						Ceiling Cavity Exitance Coefficients (CCEC)										
0.0	.216	.216	.216	.184	.184	.184	.126	.126	.126	.072	.072	.072	.023	.023	.023		
1.0	.203	.182	.163	.173	.156	.140	.119	.107	.097	.068	.062	.056	.022	.020	.018		
2.0	.193	.158	.128	.165	.136	.111	.113	.094	.077	.065	.055	.045	.021	.018	.015		
3.0	.184	.140	.105	.158	.121	.091	.108	.084	.064	.063	.049	.038	.020	.016	.012		
4.0	.176	.126	.088	.151	.109	.077	.104	.076	.054	.060	.045	.032	.019	.014	.011		
5.0	.168	.116	.077	.145	.100	.067	.100	.070	.047	.058	.041	.028	.019	.013	.009		
6.0	.161	.107	.068	.139	.093	.059	.096	.065	.042	.056	.038	.025	.018	.012	.008		
7.0	.155	.100	.062	.133	.087	.054	.092	.061	.038	.054	.036	.023	.017	.012	.007		
8.0	.149	.094	.057	.128	.082	.049	.089	.057	.035	.052	.034	.021	.017	.011	.007		
9.0	.143	.089	.053	.123	.078	.046	.086	.054	.033	.050	.032	.020	.016	.011	.006		
10.0	.138	.085	.050	.119	.074	.044	.083	.052	.031	.048	.031	.018	.016	.010	.006		

C Range: 0 - 360DEG  
C Interval: 22.5DEG  
Test Speed: HIGH  
Temperature:25.3℃  
Operators:DAMIN  
Test Date:2025-05-04

γ Range: 0 - 180DEG  
γ Interval: 1.0DEG  
Test System:EVERFINE GO-2000A\_V1 SYSTEM V2.00.471  
Humidity:65.0%  
Test Distance:12.020m [K=1.0000]  
Remarks:

### UGR(Unified Glare Rating) Table

Test:U:230.65V I:0.1794A P:39.764W PF:0.9609 Freq:50.00Hz Lamp Flux:4640.7x1 lm											
NAME: LED612-W34KA-D (40W 1050mA 3000K)					TYPE:			WEIGHT:			
SPEC.:					DIM.: 0.3363			SERIAL No.:			
MFR.:					SUR.:			Shielding Angle:			
ceiling/cavity		0.7	0.7	0.5	0.5	0.3	0.7	0.7	0.5	0.5	0.3
walls		0.5	0.3	0.5	0.3	0.3	0.5	0.3	0.5	0.3	0.3
working plane		0.2	0.2	0.2	0.2	0.2	0.2	0.2	0.2	0.2	0.2
Room dimensions		Viewed crosswise					Viewed endwise				
x = 2H y = 2H		16.1	17.4	16.4	17.7	17.9	16.0	17.3	16.3	17.6	17.8
3H		17.0	18.3	17.4	18.5	18.8	16.8	18.0	17.2	18.3	18.6
4H		17.4	18.6	17.8	18.9	19.2	17.1	18.3	17.5	18.6	18.9
6H		17.7	18.8	18.1	19.1	19.5	17.3	18.4	17.7	18.7	19.0
8H		17.8	18.9	18.2	19.2	19.5	17.3	18.4	17.7	18.7	19.0
12H		17.9	18.9	18.3	19.2	19.6	17.3	18.3	17.7	18.6	19.0
4H 2H		16.4	17.6	16.8	17.9	18.2	16.4	17.5	16.7	17.8	18.1
3H		17.6	18.6	18.0	18.9	19.3	17.4	18.4	17.8	18.7	19.1
4H		18.1	19.0	18.5	19.3	19.7	17.8	18.7	18.2	19.1	19.5
6H		18.5	19.3	18.9	19.7	20.1	18.1	18.9	18.5	19.3	19.7
8H		18.6	19.4	19.1	19.8	20.2	18.1	18.9	18.6	19.3	19.7
12H		18.7	19.4	19.2	19.9	20.3	18.1	18.8	18.6	19.2	19.7
8H 4H		18.2	18.9	18.7	19.4	19.8	17.9	18.7	18.4	19.1	19.6
6H		18.7	19.3	19.2	19.8	20.3	18.3	18.9	18.8	19.4	19.9
8H		18.9	19.5	19.5	20.0	20.5	18.4	19.0	18.9	19.4	20.0
12H		19.1	19.6	19.7	20.1	20.7	18.5	18.9	19.0	19.4	20.0
12H 4H		18.2	18.9	18.7	19.3	19.8	17.9	18.6	18.4	19.1	19.5
6H		18.7	19.3	19.2	19.8	20.3	18.3	18.9	18.8	19.4	19.9
8H		19.0	19.5	19.5	20.0	20.5	18.5	18.9	19.0	19.4	20.0
Variations with the observer position at spacings(CIE Pub.117):											
S = 1.0H		+ 0.3 / - 0.4					+ 0.4 / - 0.5				
1.5H		+ 0.2 / - 0.2					+ 0.1 / - 0.5				
2.0H		+ 0.6 / - 0.6					+ 0.6 / - 0.9				

CIE Pub.117, 4641 lm Total Lamp Luminous Flux Corrected (8log(F/F0) = 5.3)  
Area: 0.3363 m2

C Range: 0 - 360DEG  
C Interval: 22.5DEG  
Test Speed: HIGH  
Temperature:25.3℃  
Operators:DAMIN  
Test Date:2025-05-04

γ Range: 0 - 180DEG  
γ Interval: 1.0DEG  
Test System:EVERFINE GO-2000A\_V1 SYSTEM V2.00.471  
Humidity:65.0%  
Test Distance:12.020m [K=1.0000]  
Remarks:

### UTILIZATION FACTORS TABLE

Test:U:230.65V I:0.1794A P:39.764W PF:0.9609 Freq:50.00Hz Lamp Flux:4640.7x1 lm		
NAME: LED612-W34KA-D (40W 1050mA 3000K)	TYPE:	WEIGHT:
SPEC.:	DIM.: 0.3363	SERIAL No.:
MFR.:	SUR.:	Shielding Angle:

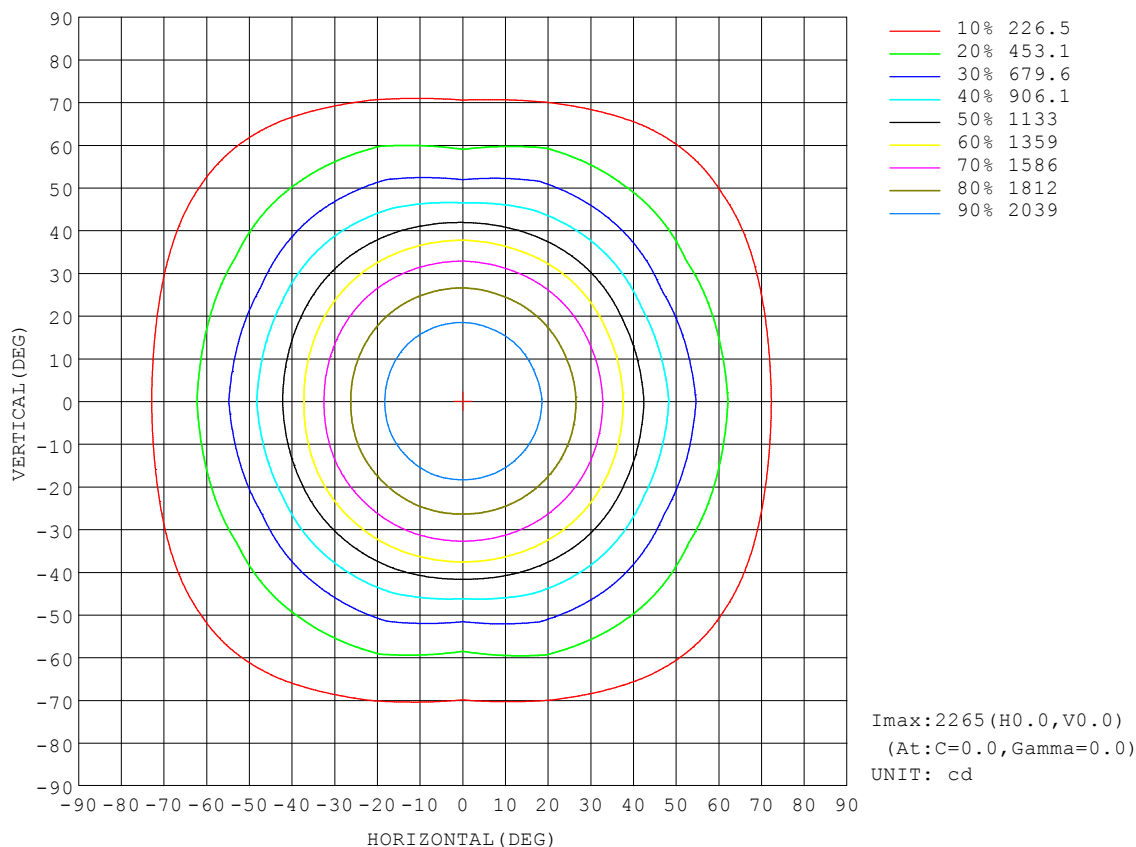
REFLECTANCE										
Ceiling	0.8	0.8	0.8	0.7	0.7	0.7	0.5	0.5	0.5	0
Walls	0.7	0.5	0.3	0.7	0.5	0.3	0.7	0.5	0.3	0
Working plane	0.2	0.2	0.2	0.2	0.2	0.2	0.2	0.2	0.2	0
ROOM INDEX	UTILIZATION FACTORS (PERCENT) $k(RI) \times RCR = 5$									
$k = 0.60$	64	54	47	63	53	47	62	53	47	41
0.80	74	63	57	73	63	57	71	62	56	50
1.00	81	72	65	80	71	65	78	72	64	58
1.25	88	79	73	86	78	72	83	76	71	64
1.50	92	84	78	90	83	77	87	81	76	69
2.00	98	91	85	96	89	84	92	87	82	75
2.50	101	95	89	99	93	88	95	90	86	78
3.00	104	98	93	102	96	92	97	93	90	81
4.00	108	103	99	105	101	97	100	97	94	85
5.00	110	105	102	107	103	100	102	99	96	87
ROOM INDEX	UF (total)									Direct
According to DIN EN 13032-2 2004			Suspended					SHRNOM = 1.25		

C Range: 0 - 360DEG  
C Interval: 22.5DEG  
Test Speed: HIGH  
Temperature: 25.3°C  
Operators: DAMIN  
Test Date: 2025-05-04

γ Range: 0 - 180DEG  
γ Interval: 1.0DEG  
Test System: EVERFINE GO-2000A\_V1 SYSTEM V2.00.471  
Humidity: 65.0%  
Test Distance: 12.020m [K=1.0000]  
Remarks:

### ISOCANDELA DIAGRAM

Test:U:230.65V I:0.1794A P:39.764W PF:0.9609 Freq:50.00Hz Lamp Flux:4640.7x1 lm		
NAME: LED612-W34KA-D (40W 1050mA 3000K)	TYPE:	WEIGHT:
SPEC.:	DIM.: 0.3363	SERIAL No.:
MFR.:	SUR.:	Shielding Angle:



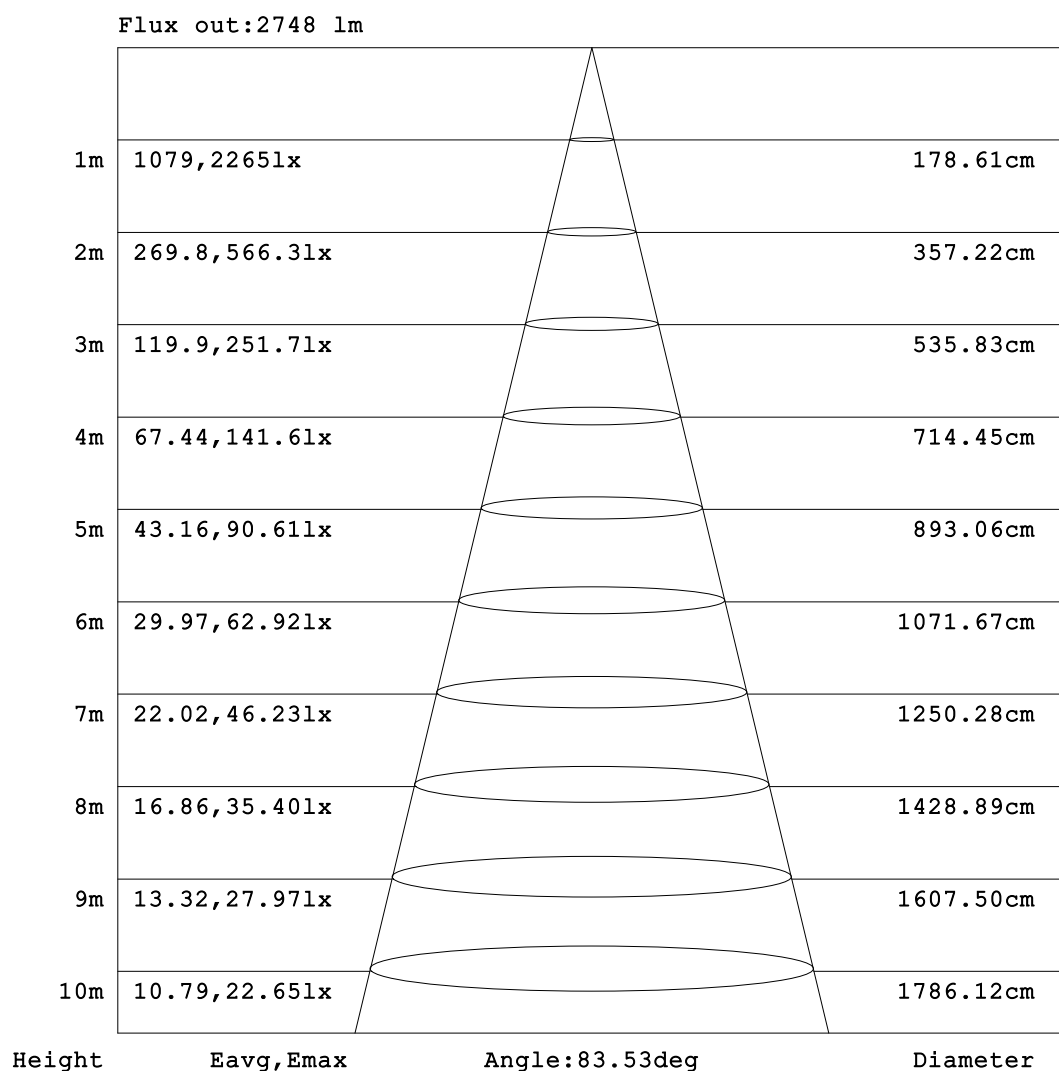
C Range: 0 - 360DEG  
C Interval: 22.5DEG  
Test Speed: HIGH  
Temperature:25.3°C  
Operators:DAMIN  
Test Date:2025-05-04

γ Range: 0 - 180DEG  
γ Interval: 1.0DEG  
Test System:EVERFINE GO-2000A\_V1 SYSTEM V2.00.471  
Humidity:65.0%  
Test Distance:12.020m [K=1.0000]  
Remarks:



**AAI Figure**

Test:U:230.65V I:0.1794A P:39.764W PF:0.9609 Freq:50.00Hz Lamp Flux:4640.7x1 lm		
NAME: LED612-W34KA-D (40W 1050mA 3000K)	TYPE:	WEIGHT:
SPEC.:	DIM.: 0.3363	SERIAL No.:
MFR.:	SUR.:	Shielding Angle:



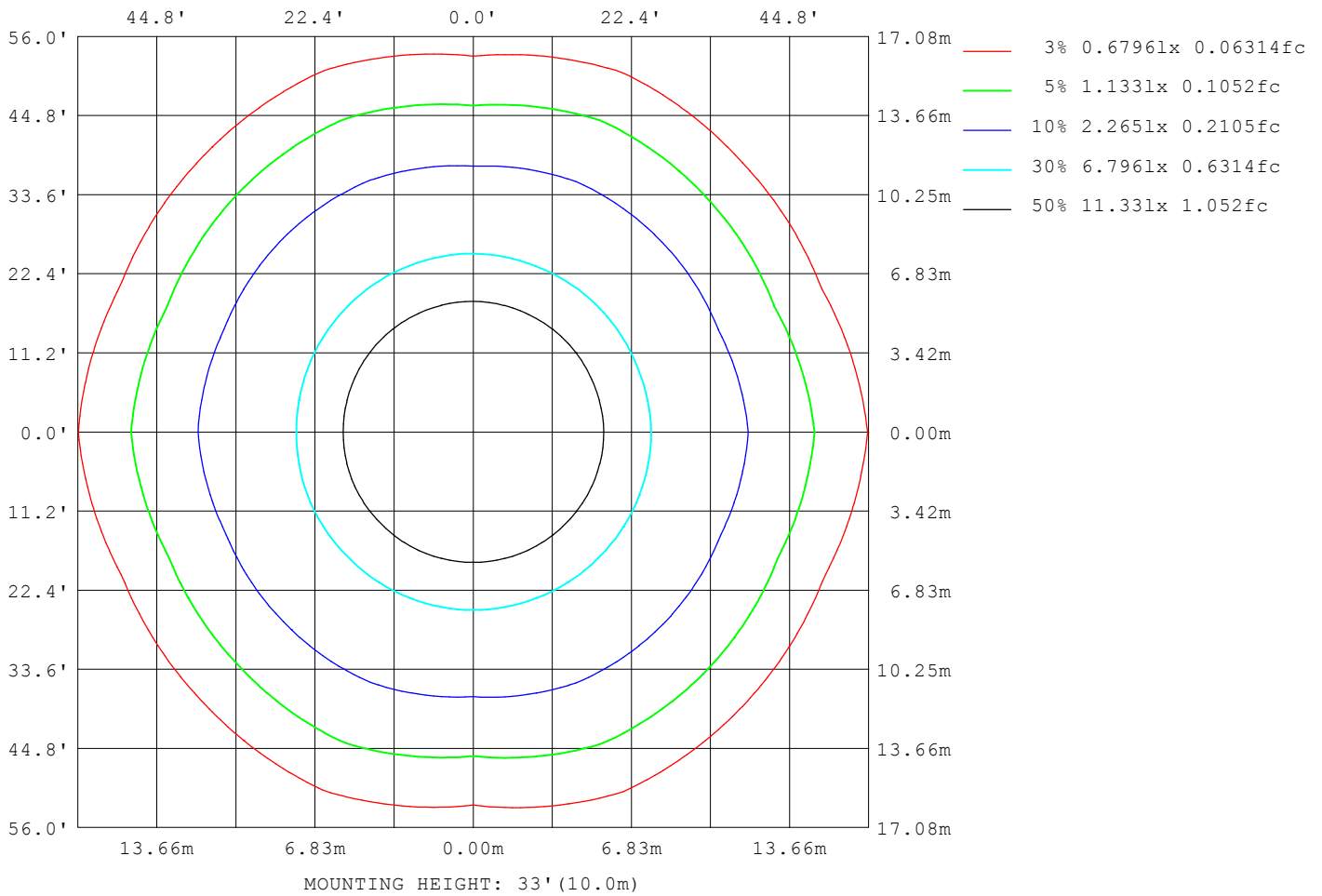
Note: The Curves indicate the illuminated area and the average illumination when the luminaire is at different distance.

C Range: 0 - 360DEG  
 C Interval: 22.5DEG  
 Test Speed: HIGH  
 Temperature: 25.3°C  
 Operators: DAMIN  
 Test Date: 2025-05-04

γ Range: 0 - 180DEG  
 γ Interval: 1.0DEG  
 Test System: EVERFINE GO-2000A\_V1 SYSTEM V2.00.471  
 Humidity: 65.0%  
 Test Distance: 12.020m [K=1.0000]  
 Remarks:

ISOLUX DIAGRAM

Test:U:230.65V I:0.1794A P:39.764W PF:0.9609 Freq:50.00Hz Lamp Flux:4640.7x1 lm		
NAME: LED612-W34KA-D (40W 1050mA 3000K)	TYPE:	WEIGHT:
SPEC.:	DIM.: 0.3363	SERIAL No.:
MFR.:	SUR.:	Shielding Angle:



C Range: 0 - 360DEG  
C Interval: 22.5DEG  
Test Speed: HIGH  
Temperature:25.3°C  
Operators:DAMIN  
Test Date:2025-05-04

γ Range: 0 - 180DEG  
γ Interval: 1.0DEG  
Test System:EVERFINE GO-2000A\_V1 SYSTEM V2.00.471  
Humidity:65.0%  
Test Distance:12.020m [K=1.0000]  
Remarks:

### LED Avg.L Report

Test:U:230.65V I:0.1794A P:39.764W PF:0.9609 Freq:50.00Hz Lamp Flux:4640.7x1 lm		
NAME: LED612-W34KA-D (40W 1050mA 3000K)	TYPE:	WEIGHT:
SPEC.:	DIM.: 0.3363	SERIAL No.:
MFR.:	SUR.:	Shielding Angle:

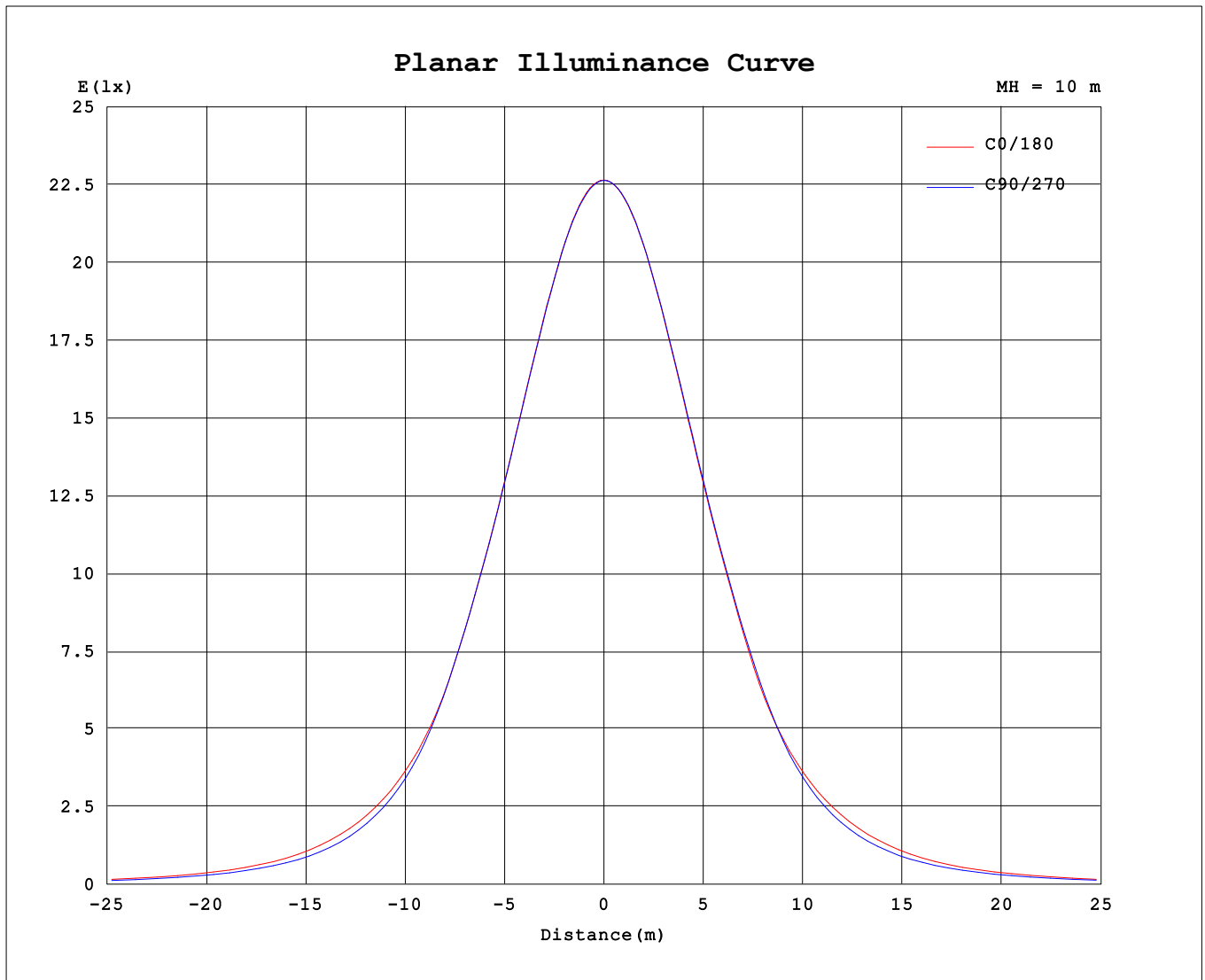
AvgL	cd/m2
L_0~180 (65) av	2718
L_0~180 (75) av	2141
L_0~180 (85) av	2116
L_90~270 (65) av	2213
L_90~270 (75) av	1763
L_90~270 (85) av	890
L_45 (65) av	2438
L_45 (75) av	2024
L_45 (85) av	1606

Standard: GB/T 29293-2012

C Range: 0 - 360DEG  
C Interval: 22.5DEG  
Test Speed: HIGH  
Temperature:25.3℃  
Operators:DAMIN  
Test Date:2025-05-04

γ Range: 0 - 180DEG  
γ Interval: 1.0DEG  
Test System:EVERFINE GO-2000A\_V1 SYSTEM V2.00.471  
Humidity:65.0%  
Test Distance:12.020m [K=1.0000]  
Remarks:

## Planar Illuminance Curve



C Range: 0 - 360DEG  
C Interval: 22.5DEG  
Test Speed: HIGH  
Temperature: 25.3°C  
Operators: DAMIN  
Test Date: 2025-05-04

$\gamma$  Range: 0 - 180DEG  
 $\gamma$  Interval: 1.0DEG  
Test System: EVERFINE GO-2000A\_V1 SYSTEM V2.00.471  
Humidity: 65.0%  
Test Distance: 12.020m [K=1.0000]  
Remarks:

### LUMINOUS DISTRIBUTION INTENSITY DATA

Test:U:230.65V I:0.1794A P:39.764W PF:0.9609 Freq:50.00Hz Lamp Flux:4640.7x1 lm																	
NAME: LED612-W34KA-D (40W 1050mA 3000K)									TYPE:						WEIGHT:		
SPEC.:									DIM.: 0.3363						SERIAL No.:		
MFR.:									SUR.:						Shielding Angle:		

Table--1

UNIT: cd

C (DEG) γ (DEG)	0	22.5	45	67.5	90	112.5	135	157.5	180	202.5	225	247.5	270	292.5	315	337.5			
0	2265	2265	2264	2264	2264	2263	2263	2262	2265	2265	2264	2264	2264	2263	2263	2262			
5	2250	2249	2248	2248	2247	2247	2246	2246	2247	2248	2248	2249	2249	2246	2247	2246			
10	2200	2201	2200	2199	2198	2199	2197	2197	2195	2197	2199	2199	2198	2194	2194	2193			
15	2117	2116	2114	2114	2113	2115	2113	2114	2110	2112	2116	2115	2114	2109	2108	2106			
20	2003	2001	1998	1999	1999	2001	1997	1999	1995	1996	2001	2002	2001	1994	1994	1991			
25	1862	1861	1856	1857	1857	1859	1854	1858	1852	1854	1860	1861	1862	1852	1851	1849			
30	1694	1692	1687	1690	1690	1690	1684	1690	1682	1685	1690	1692	1694	1682	1680	1678			
35	1490	1489	1484	1487	1490	1488	1477	1483	1474	1480	1486	1491	1493	1476	1472	1468			
40	1239	1228	1231	1229	1226	1227	1216	1220	1224	1227	1232	1235	1237	1219	1214	1204			
45	1030	988	997	994	962	991	981	981	1024	1004	1003	1004	973	986	975	965			
50	844	777	799	811	744	805	782	771	845	789	810	817	753	805	776	753			
55	668	593	618	641	558	636	602	589	673	599	626	649	571	636	600	572			
60	511	445	464	490	416	484	456	445	513	456	471	496	428	487	449	433			
65	383	335	348	359	309	359	345	339	390	347	354	369	320	356	338	327			
70	271	251	255	252	225	255	256	256	281	261	263	263	235	250	251	245			
75	181	174	171	161	150	165	180	186	192	187	185	173	157	162	169	170			
80	111	106	95.9	86.5	80.9	93.0	107	120	124	119	112	98.0	85.9	87.4	95.6	102			
85	55.5	51.4	41.3	30.7	24.5	36.4	51.3	64.9	68.5	64.7	55.0	39.5	27.7	30.8	40.7	48.9			
90	31.2	28.0	19.6	9.20	2.65	11.1	24.1	35.2	38.7	35.7	26.0	12.2	2.43	8.40	18.5	26.8			
95	25.9	23.9	18.0	9.79	3.53	11.0	21.5	29.8	32.9	30.6	22.8	11.6	3.24	8.66	16.7	23.0			
100	26.0	24.3	18.8	11.1	4.84	12.1	22.1	30.0	32.9	30.7	23.3	12.7	4.45	9.88	17.4	23.3			
105	26.4	24.9	19.6	12.4	6.47	13.4	22.8	30.3	32.9	30.9	23.9	14.0	5.98	11.1	18.2	23.7			
110	26.9	25.5	20.7	14.0	8.39	15.1	23.9	30.9	33.1	31.3	24.9	15.6	7.79	12.6	19.1	24.2			
115	27.6	26.4	20.7	15.8	10.5	17.0	24.4	31.4	33.7	31.7	24.5	17.3	9.81	14.3	19.8	25.1			
120	28.3	26.4	22.5	17.3	12.7	18.7	25.9	31.2	33.1	31.1	26.3	18.9	12.0	16.1	21.0	25.0			
125	29.0	27.6	24.3	19.2	15.1	20.5	27.4	32.4	34.2	32.3	27.8	20.2	14.3	17.8	22.7	26.3			
130	30.4	29.2	25.8	21.2	17.8	22.5	28.9	33.9	35.5	33.6	29.2	22.5	16.9	19.8	24.2	27.8			
135	31.5	30.3	27.3	22.6	20.2	24.5	30.3	34.9	36.2	34.5	30.5	24.5	19.6	21.7	25.8	28.9			
140	32.4	31.3	28.5	24.2	22.6	26.4	31.5	35.7	36.8	35.3	31.7	26.4	22.0	23.3	27.2	30.1			
145	33.2	32.2	29.2	25.9	25.0	28.2	32.6	36.2	37.2	35.9	32.7	28.2	24.4	24.9	28.4	31.0			
150	34.0	33.1	29.9	27.2	27.3	29.1	33.6	36.6	37.4	36.2	33.6	29.2	26.8	26.1	29.2	31.9			
155	34.5	33.9	30.7	28.3	29.9	30.7	34.5	36.9	37.4	36.5	34.4	30.4	29.2	27.3	30.2	32.8			
160	34.9	34.6	31.6	30.7	32.2	32.6	35.1	37.2	37.3	36.7	35.0	32.4	31.6	29.8	31.2	33.8			
165	35.3	34.6	32.2	32.8	34.1	34.4	34.6	37.0	37.3	36.7	34.5	34.1	33.6	32.2	31.4	34.3			
170	34.7	33.5	33.9	34.8	35.6	35.9	35.8	36.1	36.1	35.8	35.8	35.7	35.4	34.5	33.5	33.3			
175	35.7	35.2	35.9	36.3	36.6	36.7	36.8	36.8	36.7	36.6	36.8	36.6	36.6	36.2	35.8	35.0			
180	37.4	36.3	36.8	36.9	37.1	36.9	36.8	36.3	37.5	36.3	36.8	36.9	37.1	36.9	36.8	36.2			

C Range: 0 - 360DEG  
C Interval: 22.5DEG  
Test Speed: HIGH  
Temperature:25.3℃  
Operators:DAMIN  
Test Date:2025-05-04

γ Range: 0 - 180DEG  
γ Interval: 1.0DEG  
Test System:EVERFINE GO-2000A\_V1 SYSTEM V2.00.471  
Humidity:65.0%  
Test Distance:12.020m [K=1.0000]  
Remarks: