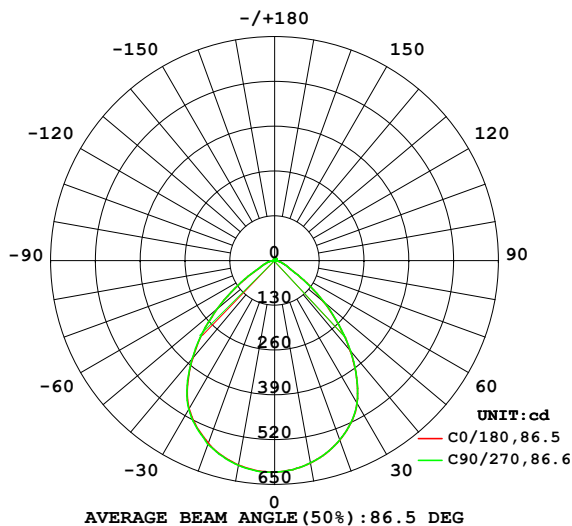


## LUMINAIRE PHOTOMETRIC TEST REPORT

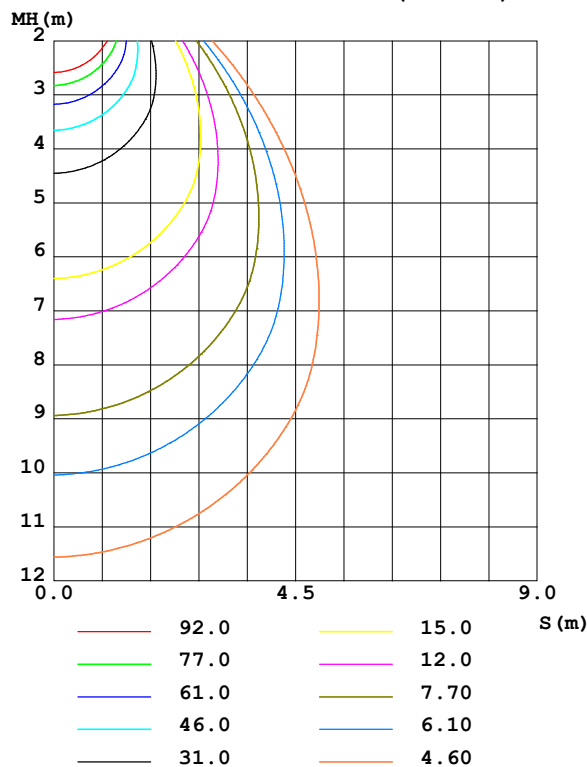
Test:U:239.29V I:0.0447A P:10.093W PF:0.9430 Freq:49.99Hz Lamp Flux:1153.21x1 lm		
NAME: R603 W4K (350MA)	TYPE:	WEIGHT:
SPEC.:	DIM.:	SERIAL No.: 1
MFR.:	SUR.:	Shielding Angle:

DATA OF LAMP		PHOTOMETRIC DATA Eff: 114.26 lm/W			
MODEL		I <sub>max</sub> (cd)	614.6	S/MH(C0/180)	1.20
NOMINAL POWER(W)	11	LOR(%)	100.0	S/MH(C90/270)	1.21
RATED VOLTAGE(V)	240	TOTAL FLUX(lm)	1153.2	η UP,DN(C0-180)	0.9,47.8
NOMINAL FLUX(lm)	1153.21	CIE CLASS	DIRECT	η UP,DN(C180-360)	0.8,50.5
LAMPS INSIDE	1	η up (%)	1.7	CIBSE SHR NOM	1.25
TEST VOLTAGE(V)	240	η down (%)	98.3	CIBSE SHR MAX	1.25

LUMINOUS INTENSITY DISTRIBUTION DIAGRAM



C0 PLANE ISOLUX DIAGRAM (UNIT:lx)



C Range: 0 - 360DEG  
C Interval: 22.5DEG  
Test Speed: HIGH  
Temperature:25.3℃  
Operators:DAMIN  
Test Date:2022-12-14

γ Range: 0 - 180DEG  
γ Interval: 1.0DEG  
Test System:EVERFINE GO-2000A\_V1 SYSTEM V2.00.457  
Humidity:65.0%  
Test Distance:12.020m [K=1.0000]  
Remarks:

## ZONAL FLUX DIAGRAM

### ZONAL FLUX DIAGRAM:

$\gamma$	C0	C45	C90	C135	C180	C225	C270	C315	$\gamma$	$\Phi$ zone	$\Phi$ total	%lum, lamp
10	596.9	594.9	596.7	600.9	602.6	605.1	603.6	599.1	0- 10	57.94	57.94	5.02,5.02
20	554.0	549.8	553.7	561.7	563.9	569.6	568.0	556.2	10- 20	164.4	222.3	19.3,19.3
30	479.0	470.7	478.8	493.5	496.7	503.5	499.0	484.3	20- 30	242.8	465.1	40.3,40.3
40	342.1	331.1	342.9	365.3	371.2	381.5	373.1	351.0	30- 40	266.3	731.5	63.4,63.4
50	185.4	175.9	186.7	208.0	216.0	227.9	217.3	193.7	40- 50	214.8	946.3	82.1,82.1
60	61.66	56.42	61.71	73.99	79.17	87.82	80.61	66.20	50- 60	116.4	1063	92.1,92.1
70	27.51	25.89	27.50	30.97	32.11	34.13	32.62	28.86	60- 70	44.98	1108	96,96
80	9.317	8.291	9.223	11.33	12.22	13.46	12.46	10.22	70- 80	20.64	1128	97.8,97.8
90	0.2998	0.3094	0.3096	0.3220	0.2808	0.9243	0.3917	0.2631	80- 90	5.141	1133	98.3,98.3
100	0.7491	0.7870	0.7505	0.6478	0.5904	0.5629	0.6008	0.6854	90-100	0.4868	1134	98.3,98.3
110	1.600	1.669	1.632	1.491	1.303	1.238	1.296	1.437	100-110	1.087	1135	98.4,98.4
120	2.762	2.878	2.805	2.617	2.353	2.260	2.337	2.517	110-120	1.963	1137	98.6,98.6
130	4.101	4.218	4.156	3.942	3.663	3.536	3.622	3.830	120-130	2.873	1140	98.8,98.8
140	5.386	5.521	5.458	5.265	4.957	4.838	4.916	5.107	130-140	3.500	1143	99.1,99.1
150	6.574	6.674	6.660	6.448	6.128	6.047	6.136	6.307	140-150	3.614	1147	99.5,99.5
160	7.681	7.789	7.794	7.629	7.326	7.258	7.385	7.491	150-160	3.206	1150	99.7,99.7
170	8.551	8.633	8.620	8.578	8.413	8.373	8.415	8.514	160-170	2.271	1152	99.9,99.9
180	8.843	8.897	8.893	9.001	8.852	8.887	8.893	9.001	170-180	0.8319	1153	100,100
DEG	LUMINOUS INTENSITY:cd									UNIT:lm		

Conical surface Flux(90deg): 849.32 lm

%lum = 73.6%

%lamp = 73.6%

Conical surface Flux(120deg): 1062.6 lm

%lum = 92.1%

%lamp = 92.1%

C Range: 0 - 360DEG  
 C Interval: 22.5DEG  
 Test Speed: HIGH  
 Temperature:25.3℃  
 Operators:DAMIN  
 Test Date:2022-12-14

$\gamma$  Range: 0 - 180DEG  
 $\gamma$  Interval: 1.0DEG  
 Test System:EVERFINE GO-2000A\_V1 SYSTEM V2.00.457  
 Humidity:65.0%  
 Test Distance:12.020m [K=1.0000]  
 Remarks:

## LUMINANCE LIMITATION CURVES

Test:U:239.29V I:0.0447A P:10.093W PF:0.9430 Freq:49.99Hz

Lamp Flux:1153.21x1 lm

NAME: R603 W4K (350MA)

TYPE:

WEIGHT:

SPEC.:

DIM.:

SERIAL No.: 1

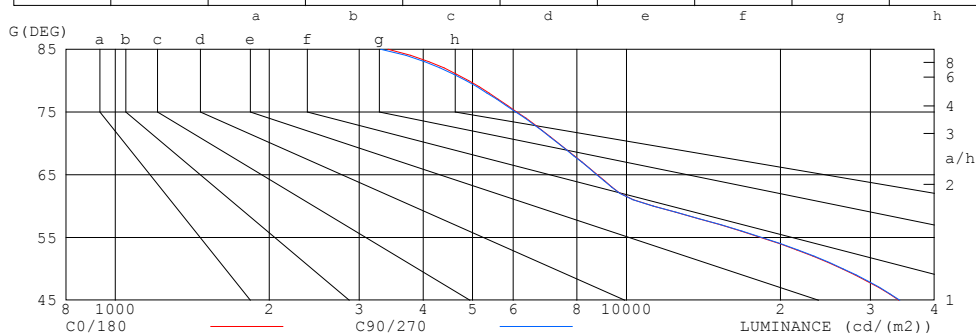
MFR.:

SUR.:

Shielding Angle:

LUMINANCE LIMITATION CURVES

GLARE	CLASS	ILLUMINANCE (lx)							
1.15	A	2000	1000	500	<=300				
1.50	B		2000	1000	500	<=300			
1.85	C			2000	1000	500	<=300		
2.20	D				2000	1000	500	<=300	
2.55	E					2000	1000	500	<=300



LUMINANCE cd/ (m2)		
G (DEG)	C0/180	C90/270
85	3415	3304
80	4912	4856
75	6099	6074
70	7365	7349
65	8767	8743
60	11291	11283
55	18305	18402
50	26410	26551
45	34114	34249

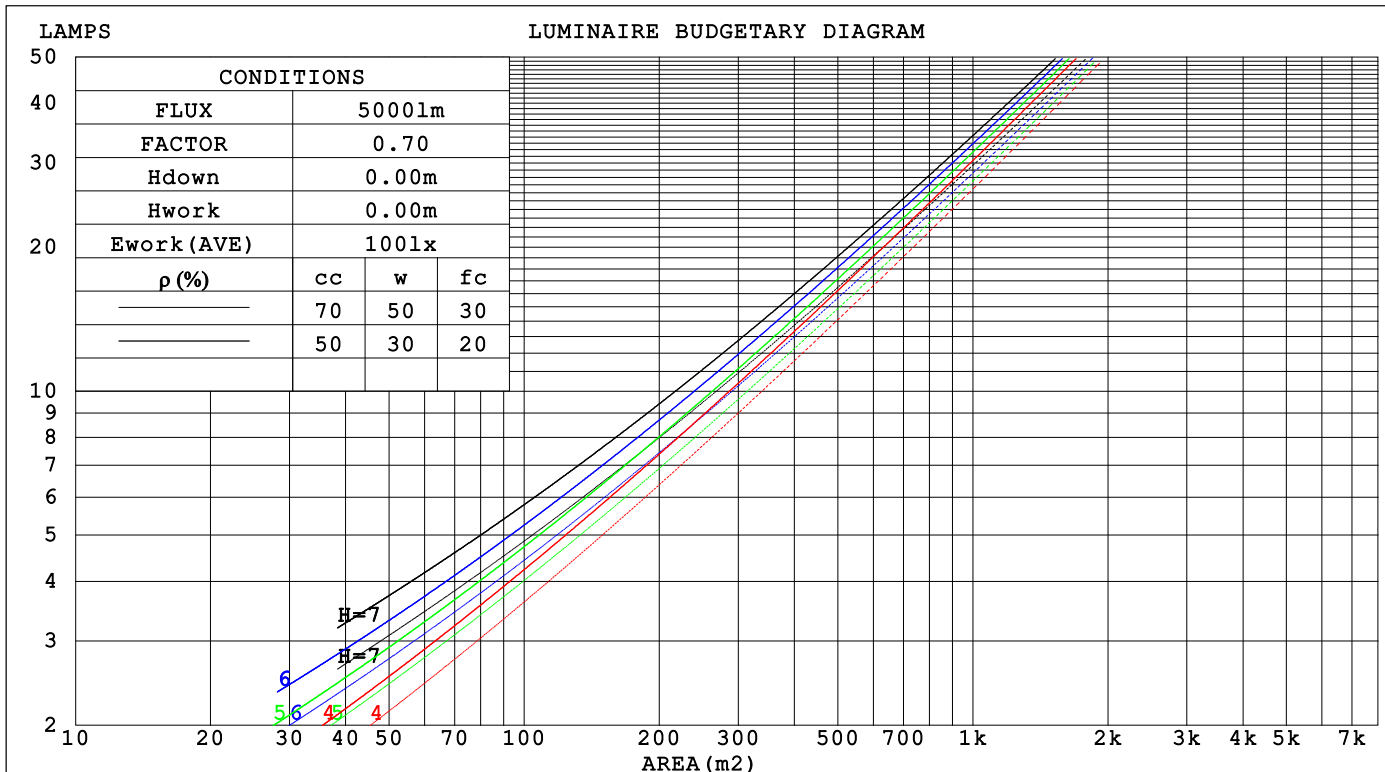
C Range: 0 - 360DEG  
C Interval: 22.5DEG  
Test Speed: HIGH  
Temperature:25.3°C  
Operators:DAMIN  
Test Date:2022-12-14

γ Range: 0 - 180DEG  
γ Interval: 1.0DEG  
Test System:EVERFINE GO-2000A\_V1 SYSTEM V2.00.457  
Humidity:65.0%  
Test Distance:12.020m [K=1.0000]  
Remarks:

## CU AND LUMINAIRE BUDGETARY ESTIMATE DIAGRAM

Test:U:239.29V I:0.0447A P:10.093W PF:0.9430 Freq:49.99Hz Lamp Flux:1153.21x1 lm		
NAME: R603 W4K (350MA)	TYPE:	WEIGHT:
SPEC.:	DIM.:	SERIAL No.: 1
MFR.:	SUR.:	Shielding Angle:

pcc	80%			70%			50%			30%			10%			0
pw	50%	30%	10%	50%	30%	10%	50%	30%	10%	50%	30%	10%	50%	30%	10%	0
pfc	20%			20%			20%			20%			20%			0
RCR	RCR:Room Cavity Ratio                      Coefficients of Utilization(CU)															
0.0	1.19	1.19	1.19	1.16	1.16	1.16	1.10	1.10	1.10	1.05	1.05	1.05	1.00	1.00	1.00	.98
1.0	1.07	1.04	1.01	1.05	1.02	.99	1.01	.98	.96	.96	.94	.93	.93	.91	.90	.88
2.0	.97	.91	.87	.95	.90	.86	.91	.87	.83	.88	.84	.81	.85	.82	.79	.77
3.0	.87	.81	.75	.86	.80	.75	.83	.77	.73	.80	.75	.72	.77	.73	.70	.68
4.0	.79	.72	.66	.78	.71	.66	.75	.69	.65	.73	.68	.64	.71	.66	.63	.61
5.0	.72	.64	.59	.71	.64	.58	.69	.62	.58	.67	.61	.57	.65	.60	.56	.54
6.0	.66	.58	.52	.65	.57	.52	.63	.56	.52	.61	.55	.51	.59	.54	.51	.49
7.0	.60	.53	.47	.59	.52	.47	.58	.51	.47	.56	.51	.46	.55	.50	.46	.44
8.0	.55	.48	.43	.55	.48	.43	.53	.47	.42	.52	.46	.42	.51	.46	.42	.40
9.0	.51	.44	.39	.51	.44	.39	.49	.43	.39	.48	.43	.38	.47	.42	.38	.36
10.0	.48	.40	.36	.47	.40	.36	.46	.40	.35	.45	.39	.35	.44	.39	.35	.33



C Range: 0 - 360DEG  
C Interval: 22.5DEG  
Test Speed: HIGH  
Temperature:25.3℃  
Operators:DAMIN  
Test Date:2022-12-14

γ Range: 0 - 180DEG  
γ Interval: 1.0DEG  
Test System:EVERFINE GO-2000A\_V1 SYSTEM V2.00.457  
Humidity:65.0%  
Test Distance:12.020m [K=1.0000]  
Remarks:

### WEC AND CCEC

Test:U:239.29V I:0.0447A P:10.093W PF:0.9430 Freq:49.99Hz Lamp Flux:1153.21x1 lm		
NAME: R603 W4K (350MA)	TYPE:	WEIGHT:
SPEC.:	DIM.:	SERIAL No.: 1
MFR.:	SUR.:	Shielding Angle:

pcc	80%			70%			50%			30%			10%			0	
pw	50%	30%	10%	50%	30%	10%	50%	30%	10%	50%	30%	10%	50%	30%	10%	0	
pfc	20%			20%			20%			20%			20%			0	
RCR	RCR:Room Cavity Ratio						Wall Exitance Coefficients(WEC)										
0.0																	
1.0	.236	.134	.042	.228	.130	.041	.214	.123	.039	.202	.116	.037	.190	.110	.035		
2.0	.228	.125	.038	.222	.122	.038	.210	.117	.036	.198	.111	.035	.188	.106	.034		
3.0	.217	.115	.035	.211	.113	.034	.201	.109	.033	.191	.105	.032	.182	.101	.031		
4.0	.205	.106	.031	.200	.105	.031	.191	.101	.030	.182	.098	.029	.174	.095	.029		
5.0	.193	.099	.029	.189	.097	.028	.181	.094	.028	.173	.091	.027	.166	.089	.027		
6.0	.183	.092	.026	.179	.090	.026	.171	.088	.026	.164	.085	.025	.158	.083	.025		
7.0	.173	.085	.024	.169	.084	.024	.162	.082	.024	.156	.080	.023	.150	.078	.023		
8.0	.163	.080	.022	.160	.079	.022	.154	.077	.022	.149	.075	.022	.143	.074	.021		
9.0	.155	.075	.021	.152	.074	.021	.147	.072	.021	.142	.071	.020	.137	.069	.020		
10.0	.147	.071	.020	.144	.070	.019	.140	.068	.019	.135	.067	.019	.131	.066	.019		

pcc	80%			70%			50%			30%			10%			0	
pw	50%	30%	10%	50%	30%	10%	50%	30%	10%	50%	30%	10%	50%	30%	10%	0	
pfc	20%			20%			20%			20%			20%			0	
RCR	RCR:Room Cavity Ratio						Ceiling Cavity Exitance Coefficients (CCEC)										
0.0	.204	.204	.204	.174	.174	.174	.119	.119	.119	.068	.068	.068	.022	.022	.022		
1.0	.188	.170	.153	.161	.146	.132	.110	.100	.091	.063	.058	.053	.020	.019	.017		
2.0	.177	.146	.119	.152	.125	.103	.104	.087	.072	.060	.050	.042	.019	.016	.014		
3.0	.168	.127	.095	.144	.110	.083	.099	.076	.058	.057	.045	.034	.018	.014	.011		
4.0	.159	.113	.078	.137	.098	.068	.094	.068	.048	.054	.040	.028	.018	.013	.009		
5.0	.152	.103	.066	.131	.089	.058	.090	.062	.041	.052	.036	.024	.017	.012	.008		
6.0	.145	.094	.057	.125	.081	.050	.086	.057	.035	.050	.034	.021	.016	.011	.007		
7.0	.139	.087	.050	.120	.075	.044	.083	.053	.031	.048	.031	.018	.016	.010	.006		
8.0	.133	.081	.045	.115	.070	.039	.079	.049	.028	.046	.029	.017	.015	.010	.006		
9.0	.128	.076	.041	.110	.066	.036	.076	.046	.025	.045	.027	.015	.014	.009	.005		
10.0	.123	.072	.038	.106	.062	.033	.074	.044	.023	.043	.026	.014	.014	.009	.005		

C Range: 0 - 360DEG  
C Interval: 22.5DEG  
Test Speed: HIGH  
Temperature:25.3℃  
Operators:DAMIN  
Test Date:2022-12-14

γ Range: 0 - 180DEG  
γ Interval: 1.0DEG  
Test System:EVERFINE GO-2000A\_V1 SYSTEM V2.00.457  
Humidity:65.0%  
Test Distance:12.020m [K=1.0000]  
Remarks:

### UGR(Unified Glare Rating) Table

Test:U:239.29V I:0.0447A P:10.093W PF:0.9430 Freq:49.99Hz Lamp Flux:1153.2lx1 lm										
NAME: R603 W4K (350MA)					TYPE:			WEIGHT:		
SPEC.:					DIM.:			SERIAL No.: 1		
MFR.:					SUR.:			Shielding Angle:		
ceiling/cavity	0.7	0.7	0.5	0.5	0.3	0.7	0.7	0.5	0.5	0.3
walls	0.5	0.3	0.5	0.3	0.3	0.5	0.3	0.5	0.3	0.3
working plane	0.2	0.2	0.2	0.2	0.2	0.2	0.2	0.2	0.2	0.2
Room dimensions	Viewed crosswise					Viewed endwise				
x = 2H y = 2H	21.8	23.0	22.1	23.3	23.5	21.8	23.0	22.0	23.2	23.5
3H	21.9	23.1	22.3	23.3	23.6	21.9	23.1	22.2	23.3	23.6
4H	22.0	23.1	22.3	23.3	23.6	22.0	23.1	22.3	23.3	23.6
6H	22.0	23.0	22.3	23.3	23.6	22.0	23.0	22.3	23.3	23.6
8H	22.0	23.0	22.3	23.3	23.6	22.0	22.9	22.3	23.2	23.5
12H	22.0	22.9	22.3	23.2	23.5	21.9	22.9	22.3	23.2	23.5
4H 2H	21.7	22.8	22.1	23.1	23.4	21.7	22.8	22.1	23.1	23.4
3H	22.0	22.9	22.4	23.3	23.6	22.0	22.9	22.4	23.2	23.6
4H	22.1	23.0	22.5	23.3	23.7	22.1	22.9	22.5	23.3	23.6
6H	22.2	22.9	22.6	23.3	23.7	22.2	22.9	22.6	23.3	23.7
8H	22.2	22.9	22.6	23.3	23.7	22.2	22.8	22.6	23.2	23.6
12H	22.2	22.8	22.6	23.2	23.6	22.1	22.8	22.6	23.2	23.6
8H 4H	22.1	22.8	22.5	23.2	23.6	22.1	22.7	22.5	23.1	23.5
6H	22.2	22.7	22.7	23.2	23.6	22.2	22.7	22.6	23.1	23.6
8H	22.2	22.7	22.7	23.2	23.6	22.2	22.7	22.7	23.1	23.6
12H	22.2	22.6	22.7	23.1	23.6	22.2	22.6	22.7	23.1	23.6
12H 4H	22.0	22.7	22.5	23.1	23.5	22.0	22.6	22.5	23.1	23.5
6H	22.2	22.7	22.6	23.1	23.6	22.1	22.6	22.6	23.1	23.6
8H	22.2	22.6	22.7	23.1	23.6	22.2	22.6	22.7	23.1	23.6
Variations with the observer position at spacings(CIE Pub.117):										
S = 1.0H	+ 1.1 / - 1.7					+ 1.1 / - 1.7				
1.5H	+ 0.8 / - 1.4					+ 0.8 / - 1.4				
2.0H	+ 2.8 / - 2.8					+ 2.9 / - 2.8				

CIE Pub.117, 1153 lm Total Lamp Luminous Flux Corrected (8log(F/F0) = 0.5)  
Area: 0.0109359 m2

C Range: 0 - 360DEG  
C Interval: 22.5DEG  
Test Speed: HIGH  
Temperature:25.3℃  
Operators:DAMIN  
Test Date:2022-12-14

γ Range: 0 - 180DEG  
γ Interval: 1.0DEG  
Test System:EVERFINE GO-2000A\_V1 SYSTEM V2.00.457  
Humidity:65.0%  
Test Distance:12.020m [K=1.0000]  
Remarks:

### UTILIZATION FACTORS TABLE

Test:U:239.29V I:0.0447A P:10.093W PF:0.9430 Freq:49.99Hz Lamp Flux:1153.2lx1 lm		
NAME: R603 W4K (350MA)	TYPE:	WEIGHT:
SPEC.:	DIM.:	SERIAL No.: 1
MFR.:	SUR.:	Shielding Angle:

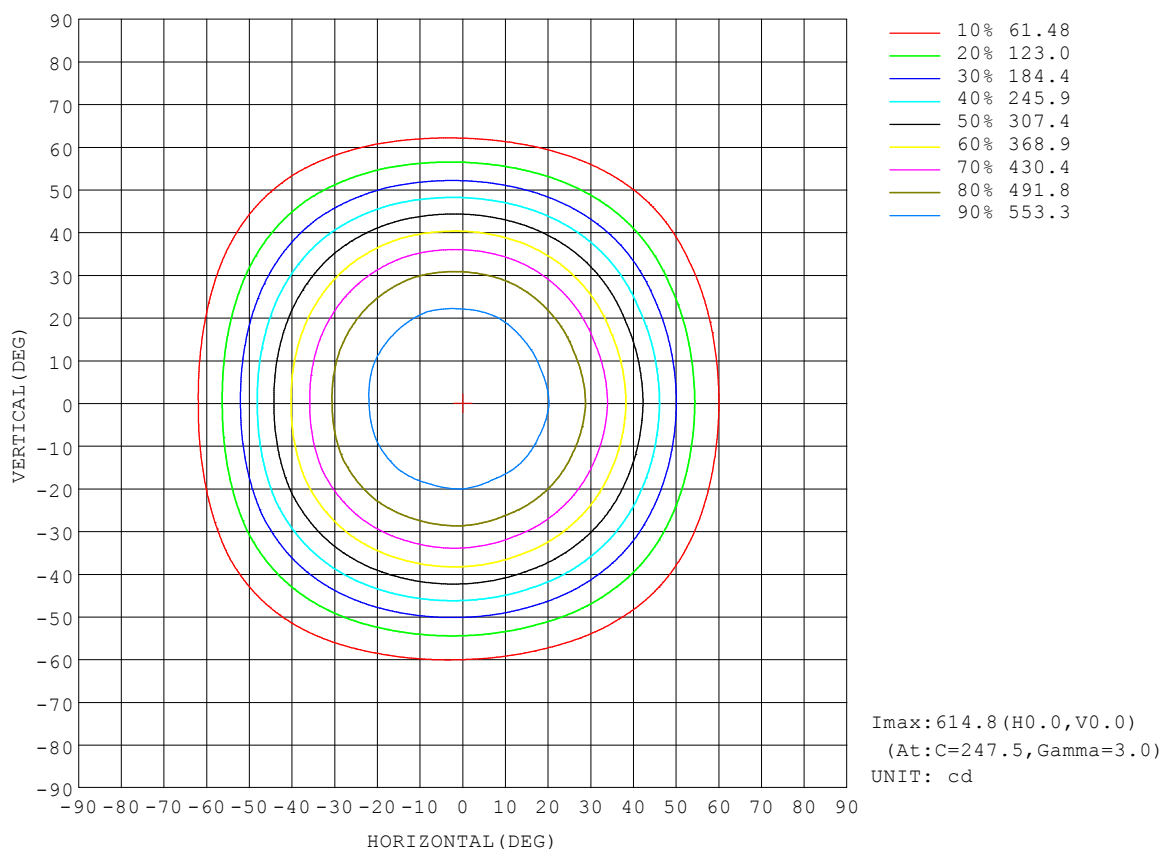
REFLECTANCE										
Ceiling	0.8	0.8	0.8	0.7	0.7	0.7	0.5	0.5	0.5	0
Walls	0.7	0.5	0.3	0.7	0.5	0.3	0.7	0.5	0.3	0
Working plane	0.2	0.2	0.2	0.2	0.2	0.2	0.2	0.2	0.2	0
ROOM INDEX	UTILIZATION FACTORS (PERCENT) $k(RI) \times RCR = 5$									
$k = 0.60$	68	59	53	68	58	53	66	58	53	47
0.80	78	69	63	77	68	63	76	68	62	57
1.00	86	77	72	85	77	71	83	77	71	65
1.25	92	84	79	91	83	78	88	82	77	71
1.50	96	89	84	95	88	83	92	86	82	76
2.00	102	95	90	100	94	90	96	92	88	81
2.50	104	98	94	102	97	93	99	94	91	83
3.00	107	102	98	105	100	96	101	97	94	86
4.00	110	105	102	107	103	100	103	100	97	89
5.00	111	108	105	109	106	103	104	102	100	91
ROOM INDEX	UF (total)									Direct
According to DIN EN 13032-2 2004			Suspended					SHRNOM = 1.25		

C Range: 0 - 360DEG  
C Interval: 22.5DEG  
Test Speed: HIGH  
Temperature: 25.3°C  
Operators: DAMIN  
Test Date: 2022-12-14

γ Range: 0 - 180DEG  
γ Interval: 1.0DEG  
Test System: EVERFINE GO-2000A\_V1 SYSTEM V2.00.457  
Humidity: 65.0%  
Test Distance: 12.020m [K=1.0000]  
Remarks:

### ISOCANDELA DIAGRAM

Test:U:239.29V I:0.0447A P:10.093W PF:0.9430 Freq:49.99Hz Lamp Flux:1153.21x1 lm		
NAME: R603 W4K (350MA)	TYPE:	WEIGHT:
SPEC.:	DIM.:	SERIAL No.: 1
MFR.:	SUR.:	Shielding Angle:



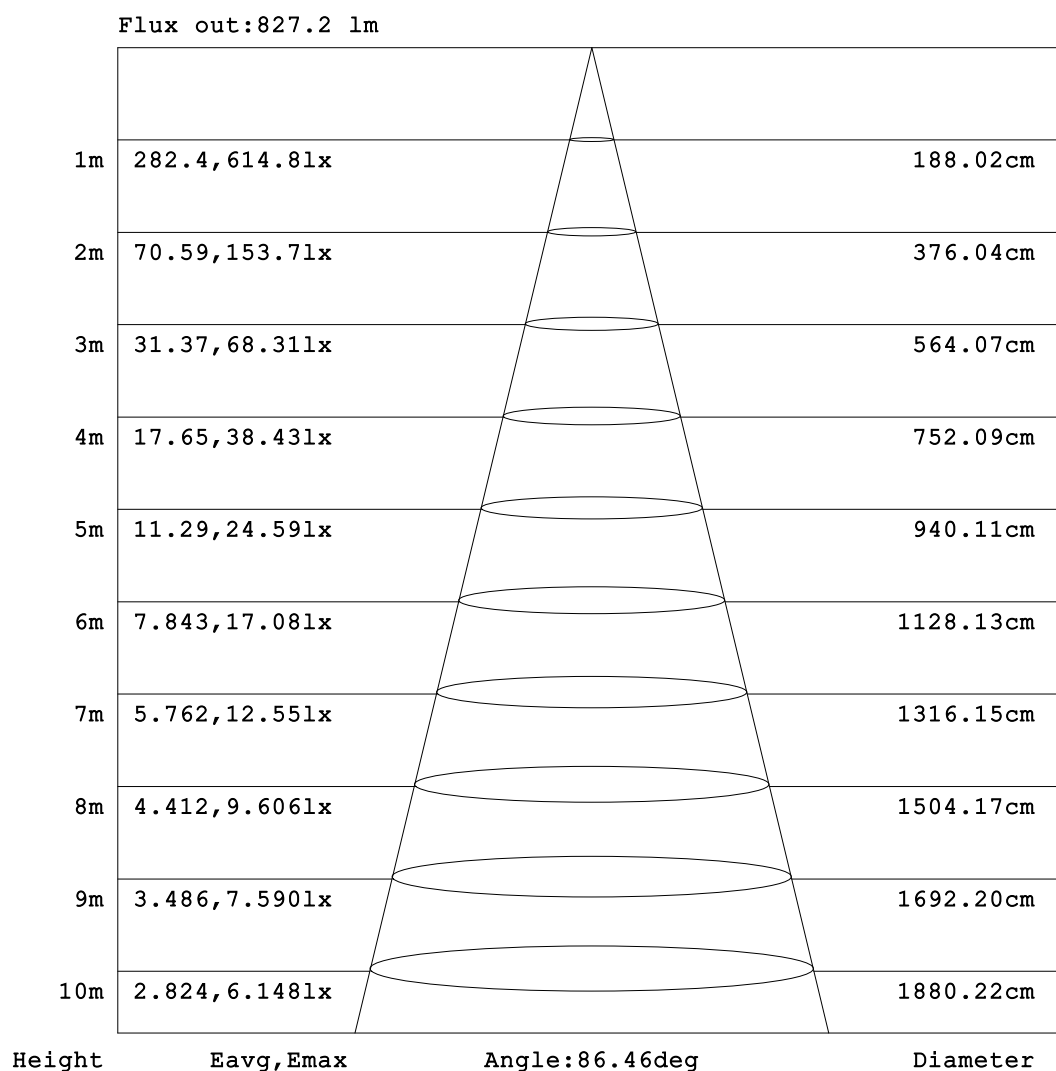
C Range: 0 - 360DEG  
C Interval: 22.5DEG  
Test Speed: HIGH  
Temperature: 25.3°C  
Operators: DAMIN  
Test Date: 2022-12-14

γ Range: 0 - 180DEG  
γ Interval: 1.0DEG  
Test System: EVERFINE GO-2000A\_V1 SYSTEM V2.00.457  
Humidity: 65.0%  
Test Distance: 12.020m [K=1.0000]  
Remarks:



**AAI Figure**

Test:U:239.29V I:0.0447A P:10.093W PF:0.9430 Freq:49.99Hz Lamp Flux:1153.2lx 1m		
NAME: R603 W4K (350MA)	TYPE:	WEIGHT:
SPEC.:	DIM.:	SERIAL No.: 1
MFR.:	SUR.:	Shielding Angle:



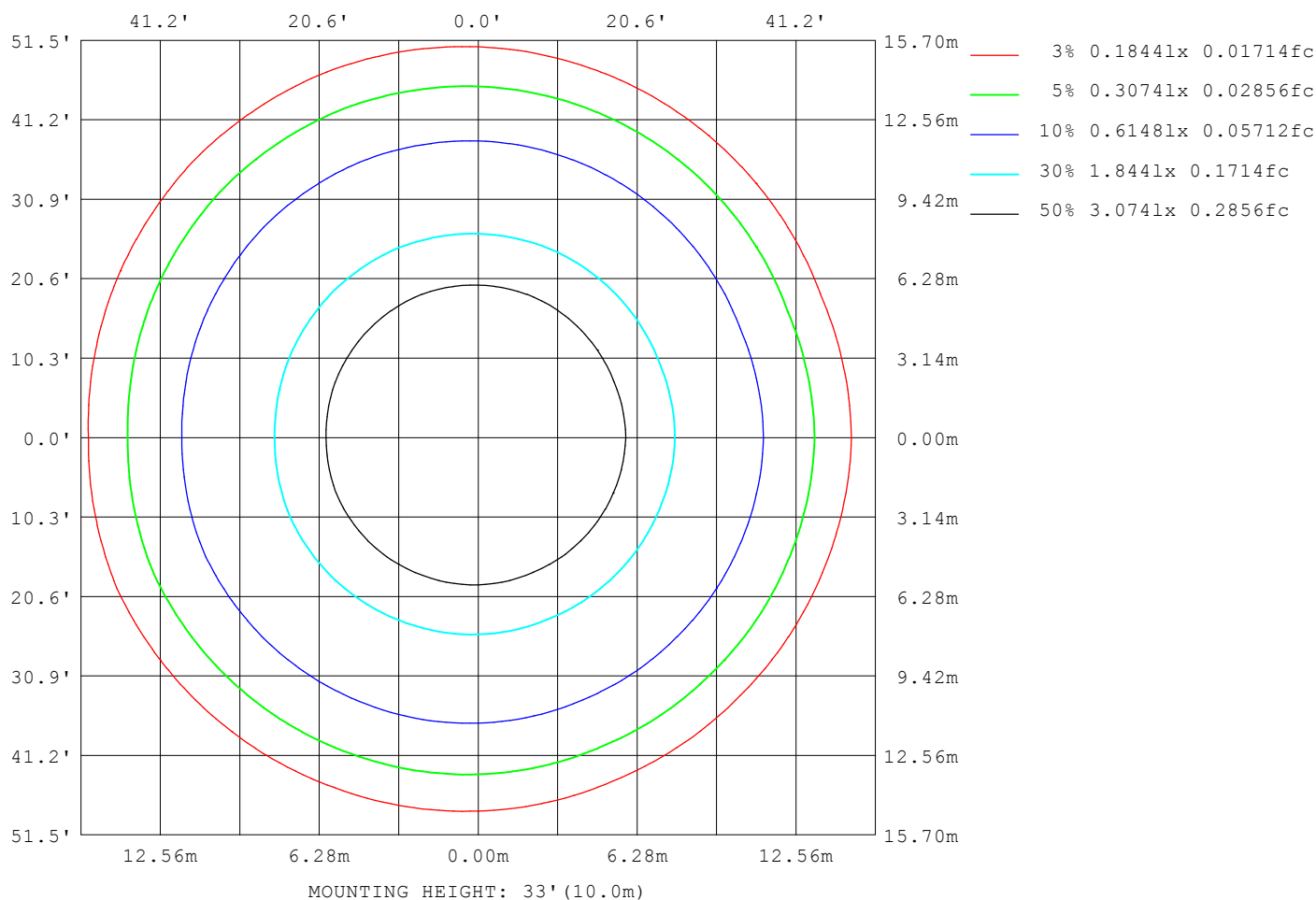
**Note:**The Curves indicate the illuminated area and the average illumination when the luminaire is at different distance.

C Range: 0 - 360DEG  
 C Interval: 22.5DEG  
 Test Speed: HIGH  
 Temperature:25.3°C  
 Operators:DAMIN  
 Test Date:2022-12-14

γ Range: 0 - 180DEG  
 γ Interval: 1.0DEG  
 Test System:EVERFINE GO-2000A\_V1 SYSTEM V2.00.457  
 Humidity:65.0%  
 Test Distance:12.020m [K=1.0000]  
 Remarks:

# ISOLUX DIAGRAM

Test:U:239.29V I:0.0447A P:10.093W PF:0.9430 Freq:49.99Hz Lamp Flux:1153.2lx1 lm		
NAME: R603 W4K (350MA)	TYPE:	WEIGHT:
SPEC.:	DIM.:	SERIAL No.: 1
MFR.:	SUR.:	Shielding Angle:



C Range: 0 - 360DEG  
C Interval: 22.5DEG  
Test Speed: HIGH  
Temperature:25.3°C  
Operators:DAMIN  
Test Date:2022-12-14

γ Range: 0 - 180DEG  
γ Interval: 1.0DEG  
Test System:EVERFINE GO-2000A\_V1 SYSTEM V2.00.457  
Humidity:65.0%  
Test Distance:12.020m [K=1.0000]  
Remarks:

### LED Avg.L Report

Test:U:239.29V I:0.0447A P:10.093W PF:0.9430 Freq:49.99Hz Lamp Flux:1153.21x1 lm		
NAME: R603 W4K (350MA)	TYPE:	WEIGHT:
SPEC.:	DIM.:	SERIAL No.: 1
MFR.:	SUR.:	Shielding Angle:

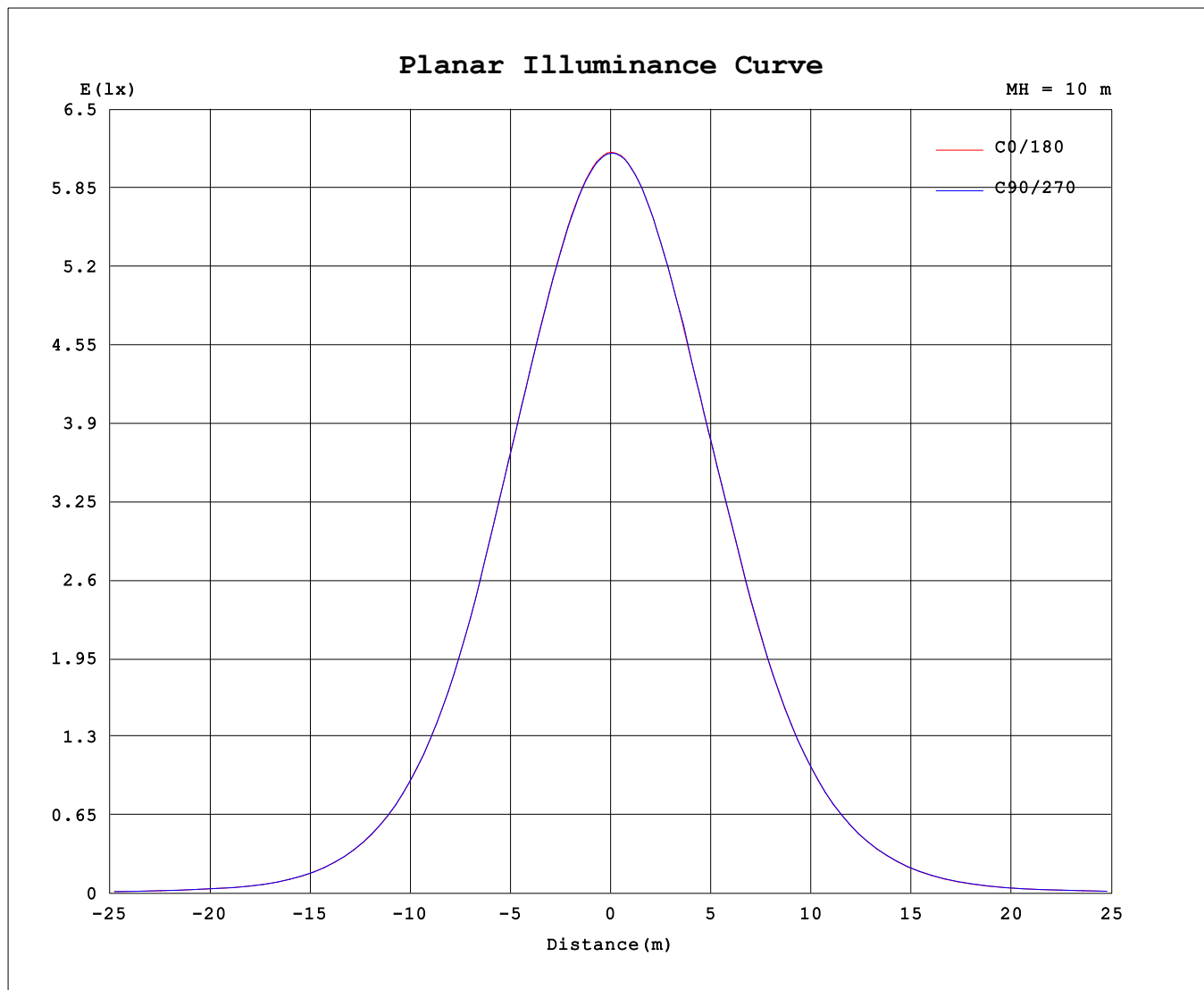
AvgL	cd/m2
L_0~180 (65) av	9386
L_0~180 (75) av	6736
L_0~180 (85) av	4555
L_90~270 (65) av	9417
L_90~270 (75) av	6796
L_90~270 (85) av	4584
L_45 (65) av	9412
L_45 (75) av	6785
L_45 (85) av	4587

Standard: GB/T 29293-2012

C Range: 0 - 360DEG  
C Interval: 22.5DEG  
Test Speed: HIGH  
Temperature:25.3℃  
Operators:DAMIN  
Test Date:2022-12-14

γ Range: 0 - 180DEG  
γ Interval: 1.0DEG  
Test System:EVERFINE GO-2000A\_V1 SYSTEM V2.00.457  
Humidity:65.0%  
Test Distance:12.020m [K=1.0000]  
Remarks:

## Planar Illuminance Curve



C Range: 0 - 360DEG  
C Interval: 22.5DEG  
Test Speed: HIGH  
Temperature: 25.3°C  
Operators: DAMIN  
Test Date: 2022-12-14

$\gamma$  Range: 0 - 180DEG  
 $\gamma$  Interval: 1.0DEG  
Test System: EVERFINE GO-2000A\_V1 SYSTEM V2.00.457  
Humidity: 65.0%  
Test Distance: 12.020m [K=1.0000]  
Remarks:

### LUMINOUS DISTRIBUTION INTENSITY DATA

Test:U:239.29V I:0.0447A P:10.093W PF:0.9430 Freq:49.99Hz Lamp Flux:1153.21x1 lm		
NAME: R603 W4K (350MA)	TYPE:	WEIGHT:
SPEC.:	DIM.:	SERIAL No.: 1
MFR.:	SUR.:	Shielding Angle:

Table--1

UNIT: cd

C (DEG) γ (DEG)	0	22.5	45	67.5	90	112.5	135	157.5	180	202.5	225	247.5	270	292.5	315	337.5			
0	614	614	614	614	614	614	614	614	614	614	614	614	614	614	614	614			
5	609	608	608	608	609	610	611	612	612	613	613	613	613	611	610	609			
10	597	596	595	595	597	598	601	603	603	604	605	605	604	601	599	597			
15	579	577	576	576	579	581	585	588	587	589	591	590	588	585	582	578			
20	554	550	550	549	554	555	562	565	564	567	570	569	568	562	556	553			
25	522	517	517	516	522	524	532	536	534	539	539	541	536	532	525	521			
30	479	473	471	471	479	484	494	499	497	502	504	505	499	494	484	477			
35	415	408	405	406	416	424	436	445	441	447	450	451	443	435	423	413			
40	342	334	331	333	343	352	365	375	371	378	382	381	373	364	351	339			
45	263	256	253	255	265	275	288	299	295	302	306	305	296	286	273	261			
50	185	179	176	178	187	196	208	220	216	223	228	226	217	206	194	182			
55	115	109	107	108	115	123	133	144	141	148	153	151	142	132	121	112			
60	61.7	58.3	56.4	57.4	61.7	66.7	74.0	81.5	79.2	84.5	87.8	86.6	80.6	73.4	66.2	60.0			
65	40.5	39.2	38.5	38.8	40.4	42.3	44.8	47.1	46.3	47.7	48.7	48.4	46.6	44.4	42.0	39.8			
70	27.5	26.4	25.9	26.1	27.5	28.9	31.0	32.8	32.1	33.3	34.1	34.0	32.6	30.9	28.9	27.0			
75	17.2	16.4	15.9	16.2	17.2	18.4	20.0	21.4	20.9	21.9	22.5	22.4	21.3	20.0	18.4	16.8			
80	9.32	8.67	8.29	8.46	9.22	10.2	11.3	12.6	12.2	12.9	13.5	13.2	12.5	11.3	10.2	9.02			
85	3.25	2.75	2.46	2.55	3.15	3.85	4.75	5.69	5.43	5.97	6.38	6.22	5.59	4.76	3.89	3.02			
90	0.30	0.36	0.31	0.37	0.31	0.33	0.32	0.47	0.28	0.65	0.92	0.84	0.39	0.27	0.26	0.25			
95	0.45	0.56	0.50	0.58	0.47	0.52	0.40	0.46	0.38	0.29	0.36	0.31	0.38	0.32	0.44	0.41			
100	0.75	0.85	0.79	0.90	0.75	0.80	0.65	0.69	0.59	0.48	0.56	0.47	0.60	0.54	0.69	0.62			
105	1.10	1.25	1.19	1.30	1.14	1.17	1.01	1.04	0.89	0.76	0.84	0.76	0.90	0.84	1.01	0.99			
110	1.60	1.74	1.67	1.76	1.63	1.63	1.49	1.47	1.30	1.19	1.24	1.16	1.30	1.26	1.44	1.43			
115	2.13	2.30	2.24	2.35	2.17	2.19	1.99	2.00	1.80	1.65	1.71	1.63	1.78	1.76	1.94	1.94			
120	2.76	2.93	2.88	2.96	2.80	2.81	2.62	2.60	2.35	2.21	2.26	2.19	2.34	2.32	2.52	2.53			
125	3.43	3.59	3.54	3.62	3.46	3.46	3.27	3.25	3.00	2.83	2.89	2.80	2.97	2.97	3.16	3.18			
130	4.10	4.26	4.22	4.30	4.16	4.14	3.94	3.92	3.66	3.49	3.54	3.44	3.62	3.61	3.83	3.85			
135	4.79	4.92	4.89	4.96	4.81	4.81	4.63	4.61	4.32	4.14	4.19	4.10	4.27	4.28	4.48	4.49			
140	5.39	5.55	5.52	5.60	5.46	5.46	5.27	5.26	4.96	4.79	4.84	4.75	4.92	4.94	5.11	5.11			
145	5.97	6.12	6.11	6.20	6.06	6.07	5.87	5.86	5.55	5.38	5.44	5.37	5.53	5.51	5.72	5.71			
150	6.57	6.70	6.67	6.79	6.66	6.65	6.45	6.46	6.13	5.96	6.05	5.97	6.14	6.12	6.31	6.29			
155	7.17	7.29	7.24	7.36	7.24	7.24	7.05	7.07	6.72	6.59	6.65	6.58	6.76	6.73	6.90	6.89			
160	7.68	7.84	7.79	7.91	7.79	7.80	7.63	7.66	7.33	7.18	7.26	7.21	7.38	7.33	7.49	7.49			
165	8.17	8.30	8.24	8.38	8.27	8.28	8.15	8.20	7.93	7.78	7.85	7.79	7.97	7.90	8.04	8.03			
170	8.55	8.68	8.63	8.73	8.62	8.69	8.58	8.64	8.41	8.30	8.37	8.26	8.42	8.37	8.51	8.48			
175	8.83	8.87	8.86	8.90	8.86	8.94	8.91	8.94	8.74	8.71	8.74	8.62	8.73	8.70	8.86	8.76			
180	8.84	8.87	8.90	8.90	8.89	8.94	9.00	9.00	8.85	8.86	8.89	8.87	8.89	8.91	9.00	8.92			

C Range: 0 - 360DEG  
C Interval: 22.5DEG  
Test Speed: HIGH  
Temperature:25.3℃  
Operators:DAMIN  
Test Date:2022-12-14

γ Range: 0 - 180DEG  
γ Interval: 1.0DEG  
Test System:EVERFINE GO-2000A\_V1 SYSTEM V2.00.457  
Humidity:65.0%  
Test Distance:12.020m [K=1.0000]  
Remarks: