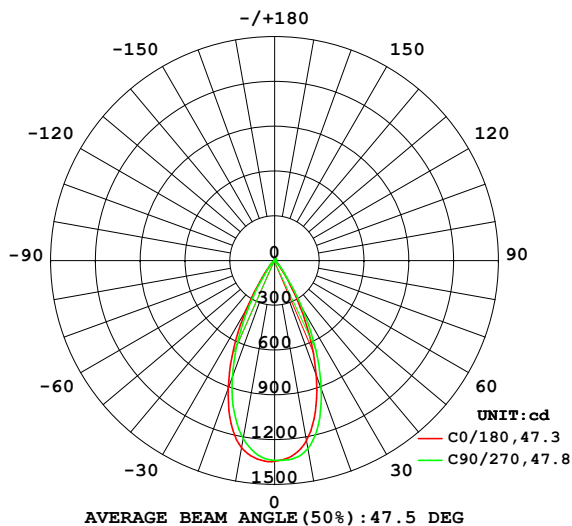


## LUMINAIRE PHOTOMETRIC TEST REPORT

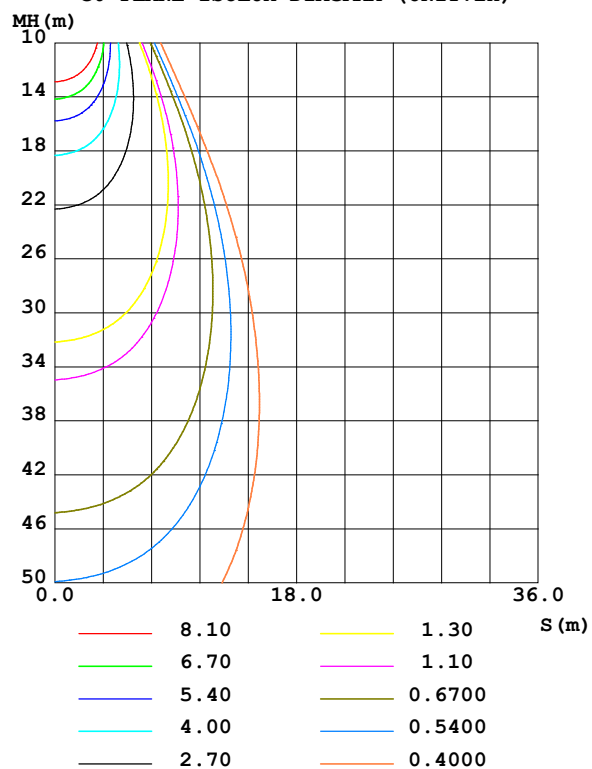
Test:U:230.29V I:0.0464A P:9.9921W PF:0.9344 Freq:50.00Hz Lamp Flux:854.6x1 lm		
NAME: R730 B4K	TYPE:	WEIGHT:
SPEC.:	DIM.:	SERIAL No.:
MFR.: EVERFINE	SUR.:	Shielding Angle:

DATA OF LAMP		PHOTOMETRIC DATA Eff: 85.53 lm/W			
MODEL		I <sub>max</sub> (cd)	1347	S/MH(C0/180)	0.76
NOMINAL POWER(W)	9.8	LOR(%)	100.0	S/MH(C90/270)	0.72
RATED VOLTAGE(V)	230	TOTAL FLUX(lm)	854.60	η UP,DN(C0-180)	0.9,50.4
NOMINAL FLUX(lm)	854.6	CIE CLASS	DIRECT	η UP,DN(C180-360)	0.9,47.8
LAMPS INSIDE	1	η up (%)	1.8	CIBSE SHR NOM	0.75
TEST VOLTAGE(V)	230	η down (%)	98.2	CIBSE SHR MAX	0.75

LUMINOUS INTENSITY DISTRIBUTION DIAGRAM



C0 PLANE ISOLUX DIAGRAM (UNIT:lx)



C Range: 0 - 360DEG  
C Interval: 22.5DEG  
Test Speed: HIGH  
Temperature: 25.3°C  
Operators: DAMIN  
Test Date: 2023-10-24

γ Range: 0 - 180DEG  
γ Interval: 1.0DEG  
Test System: EVERFINE GO-2000A\_V1 SYSTEM V2.00.477  
Humidity: 65.0%  
Test Distance: 12.020m [K=1.0000]  
Remarks:

## ZONAL FLUX DIAGRAM

### ZONAL FLUX DIAGRAM:

$\gamma$	C0	C45	C90	C135	C180	C225	C270	C315	$\gamma$	$\Phi$ zone	$\Phi$ total	%lum, lamp
10	1226	1256	1280	1283	1273	1246	1210	1194	0- 10	123.7	123.7	14.5,14.5
20	817.3	860.6	914.7	938.5	909.5	878.3	830.2	792.6	10- 20	300.1	423.8	49.6,49.6
30	306.4	329.7	375.3	409.8	385.9	358.3	323.2	289.3	20- 30	273.3	697.1	81.6,81.6
40	66.00	68.59	73.51	77.95	78.08	73.23	65.88	60.56	30- 40	105.4	802.6	93.9,93.9
50	15.18	13.76	14.11	17.03	19.47	19.35	16.91	14.94	40- 50	30.50	833.1	97.5,97.5
60	0.8705	0.7914	0.9585	1.494	1.734	1.622	1.059	0.8576	50- 60	5.722	838.8	98.1,98.1
70	0.0188	0.0189	0.0376	0.0470	0	0	0.0094	0	60- 70	0.2008	839.0	98.2,98.2
80	0	0.0094	0	0.0094	0	0	0.0094	0	70- 80	0.0095	839.0	98.2,98.2
90	0	0	0	0	0.0095	0.0095	0.0095	0.0095	80- 90	0.0040	839.0	98.2,98.2
100	0.0094	0.0094	0	0.0094	0.0657	0.0658	0.0752	0.0752	90-100	0.0218	839.0	98.2,98.2
110	0.2057	0.1874	0.1594	0.1407	0.2159	0.2158	0.2350	0.2441	100-110	0.1038	839.1	98.2,98.2
120	1.003	0.9372	0.8703	0.7676	0.7426	0.7791	0.8447	0.9099	110-120	0.4610	839.6	98.2,98.2
130	2.661	2.531	2.372	2.221	2.047	2.158	2.318	2.413	120-130	1.352	840.9	98.4,98.4
140	4.941	4.791	4.557	4.425	4.127	4.296	4.521	4.645	130-140	2.598	843.5	98.7,98.7
150	7.464	7.306	7.079	6.911	6.596	6.773	7.016	7.102	140-150	3.597	847.1	99.1,99.1
160	9.424	9.292	9.160	9.021	8.789	8.874	9.013	9.032	150-160	3.730	850.9	99.6,99.6
170	10.44	10.40	10.35	10.22	10.19	10.22	10.27	10.22	160-170	2.740	853.6	99.9,99.9
180	10.82	10.92	10.92	10.79	10.84	10.94	10.92	10.81	170-180	1.006	854.6	100,100
DEG	LUMINOUS INTENSITY:cd									UNIT:lm		

Conical surface Flux(90deg): 822.12 lm

%lum = 96.2%

%lamp = 96.2%

Conical surface Flux(120deg): 838.78 lm

%lum = 98.1%

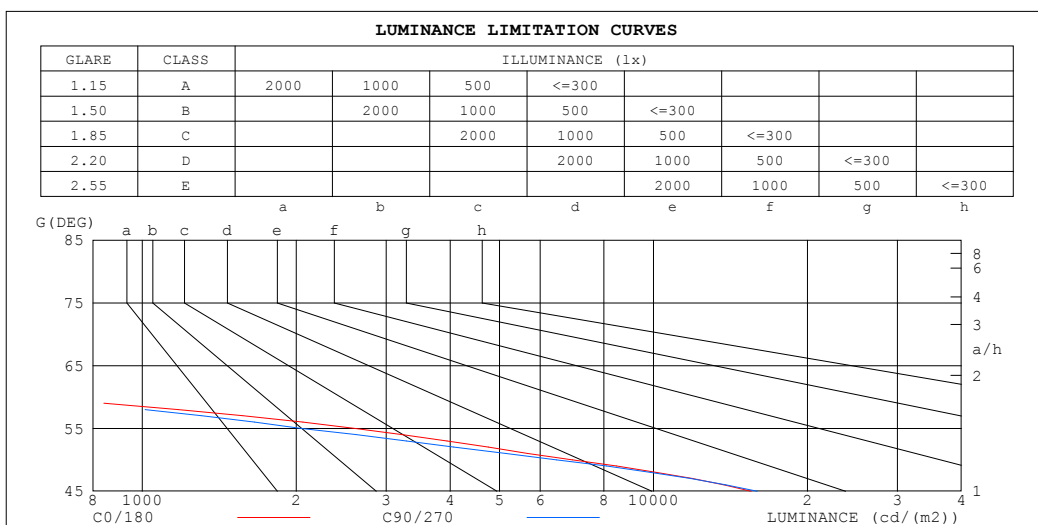
%lamp = 98.1%

C Range: 0 - 360DEG  
 C Interval: 22.5DEG  
 Test Speed: HIGH  
 Temperature:25.3℃  
 Operators:DAMIN  
 Test Date:2023-10-24

$\gamma$  Range: 0 - 180DEG  
 $\gamma$  Interval: 1.0DEG  
 Test System:EVERFINE GO-2000A\_V1 SYSTEM V2.00.477  
 Humidity:65.0%  
 Test Distance:12.020m [K=1.0000]  
 Remarks:

## LUMINANCE LIMITATION CURVES

Test:U:230.29V I:0.0464A P:9.9921W PF:0.9344 Freq:50.00Hz Lamp Flux:854.6x1 lm		
NAME: R730 B4K	TYPE:	WEIGHT:
SPEC.:	DIM.:	SERIAL No.:
MFR.: EVERFINE	SUR.:	Shielding Angle:



LUMINANCE cd/(m2)		
G (DEG)	C0/180	C90/270
85	0	0
80	0	0
75	11	11
70	16	32
65	33	52
60	512	564
55	2613	2050
50	6945	6457
45	15531	15954

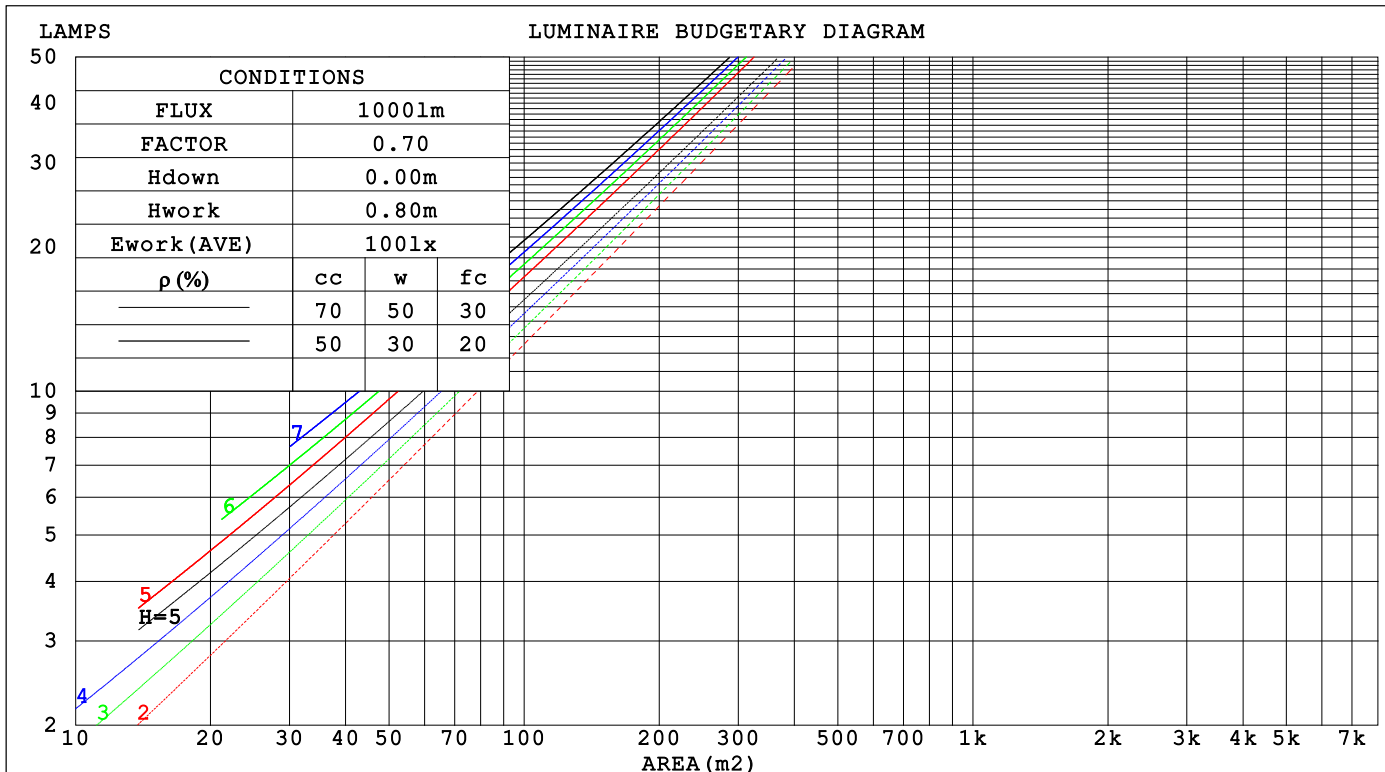
C Range: 0 - 360DEG  
C Interval: 22.5DEG  
Test Speed: HIGH  
Temperature: 25.3°C  
Operators: DAMIN  
Test Date: 2023-10-24

γ Range: 0 - 180DEG  
γ Interval: 1.0DEG  
Test System: EVERFINE GO-2000A\_V1 SYSTEM V2.00.477  
Humidity: 65.0%  
Test Distance: 12.020m [K=1.0000]  
Remarks:

CU AND LUMINAIRE BUDGETARY ESTIMATE DIAGRAM

Test:U:230.29V I:0.0464A P:9.9921W PF:0.9344 Freq:50.00Hz Lamp Flux:854.6x1 lm		
NAME: R730 B4K	TYPE:	WEIGHT:
SPEC.:	DIM.:	SERIAL No.:
MFR.: EVERFINE	SUR.:	Shielding Angle:

pcc	80%			70%			50%			30%			10%			0
pw	50%	30%	10%	50%	30%	10%	50%	30%	10%	50%	30%	10%	50%	30%	10%	0
pfc	20%			20%			20%			20%			20%			0
RCR	RCR:Room Cavity Ratio															



C Range: 0 - 360DEG  
C Interval: 22.5DEG  
Test Speed: HIGH  
Temperature:25.3℃  
Operators:DAMIN  
Test Date:2023-10-24

γ Range: 0 - 180DEG  
γ Interval: 1.0DEG  
Test System:EVERFINE GO-2000A\_V1 SYSTEM V2.00.477  
Humidity:65.0%  
Test Distance:12.020m [K=1.0000]  
Remarks:

### WEC AND CCEC

Test:U:230.29V I:0.0464A P:9.9921W PF:0.9344 Freq:50.00Hz Lamp Flux:854.6x1 lm		
NAME: R730 B4K	TYPE:	WEIGHT:
SPEC.:	DIM.:	SERIAL No.:
MFR.: EVERFINE	SUR.:	Shielding Angle:

pcc	80%			70%			50%			30%			10%			0	
pw	50%	30%	10%	50%	30%	10%	50%	30%	10%	50%	30%	10%	50%	30%	10%	0	
pfc	20%			20%			20%			20%			20%			0	
RCR	RCR:Room Cavity Ratio						Wall Exitance Coefficients(WEC)										
0.0																	
1.0	.166	.094	.030	.158	.090	.029	.145	.083	.027	.132	.076	.024	.121	.070	.023		
2.0	.157	.086	.026	.151	.083	.026	.140	.078	.024	.129	.072	.023	.119	.067	.021		
3.0	.149	.079	.024	.144	.077	.023	.134	.073	.022	.125	.069	.021	.117	.065	.020		
4.0	.142	.074	.022	.137	.072	.021	.129	.068	.020	.121	.065	.020	.114	.062	.019		
5.0	.135	.069	.020	.131	.067	.020	.124	.064	.019	.117	.062	.018	.110	.059	.018		
6.0	.129	.065	.018	.125	.063	.018	.119	.061	.018	.113	.059	.017	.107	.056	.017		
7.0	.123	.061	.017	.120	.060	.017	.114	.058	.017	.109	.056	.016	.104	.054	.016		
8.0	.118	.058	.016	.115	.057	.016	.110	.055	.016	.105	.053	.015	.100	.052	.015		
9.0	.113	.055	.015	.111	.054	.015	.106	.052	.015	.101	.051	.015	.097	.049	.014		
10.0	.109	.052	.014	.106	.051	.014	.102	.050	.014	.098	.049	.014	.094	.047	.014		

pcc	80%			70%			50%			30%			10%			0	
pw	50%	30%	10%	50%	30%	10%	50%	30%	10%	50%	30%	10%	50%	30%	10%	0	
pfc	20%			20%			20%			20%			20%			0	
RCR	RCR:Room Cavity Ratio						Ceiling Cavity Exitance Coefficients (CCEC)										
0.0	.204	.204	.204	.175	.175	.175	.119	.119	.119	.068	.068	.068	.022	.022	.022		
1.0	.184	.171	.160	.158	.147	.138	.108	.101	.095	.062	.059	.055	.020	.019	.018		
2.0	.168	.147	.128	.144	.126	.111	.099	.087	.077	.057	.051	.045	.018	.016	.015		
3.0	.155	.128	.106	.133	.110	.092	.091	.077	.064	.053	.045	.038	.017	.015	.012		
4.0	.145	.113	.089	.124	.098	.077	.085	.068	.054	.049	.040	.032	.016	.013	.011		
5.0	.136	.101	.076	.116	.087	.066	.080	.061	.046	.046	.036	.028	.015	.012	.009		
6.0	.128	.092	.066	.110	.079	.057	.076	.056	.040	.044	.033	.024	.014	.011	.008		
7.0	.121	.084	.058	.104	.073	.050	.072	.051	.036	.042	.030	.021	.014	.010	.007		
8.0	.115	.078	.052	.099	.067	.045	.069	.047	.032	.040	.028	.019	.013	.009	.006		
9.0	.110	.072	.047	.095	.063	.041	.066	.044	.029	.038	.026	.017	.012	.009	.006		
10.0	.106	.068	.043	.091	.059	.037	.063	.042	.027	.037	.025	.016	.012	.008	.005		

C Range: 0 - 360DEG  
C Interval: 22.5DEG  
Test Speed: HIGH  
Temperature:25.3℃  
Operators:DAMIN  
Test Date:2023-10-24

γ Range: 0 - 180DEG  
γ Interval: 1.0DEG  
Test System:EVERFINE GO-2000A\_V1 SYSTEM V2.00.477  
Humidity:65.0%  
Test Distance:12.020m [K=1.0000]  
Remarks:

### UGR(Unified Glare Rating) Table

Test:U:230.29V I:0.0464A P:9.9921W PF:0.9344 Freq:50.00Hz Lamp Flux:854.6x1 lm										
NAME: R730 B4K					TYPE:			WEIGHT:		
SPEC.:					DIM.:			SERIAL No.:		
MFR.: EVERFINE					SUR.:			Shielding Angle:		
ceiling/cavity	0.7	0.7	0.5	0.5	0.3	0.7	0.7	0.5	0.5	0.3
walls	0.5	0.3	0.5	0.3	0.3	0.5	0.3	0.5	0.3	0.3
working plane	0.2	0.2	0.2	0.2	0.2	0.2	0.2	0.2	0.2	0.2
Room dimensions	Viewed crosswise					Viewed endwise				
x = 2H y = 2H	15.4	16.3	15.7	16.5	16.6	16.3	17.1	16.5	17.3	17.5
3H	15.2	16.0	15.5	16.2	16.5	16.1	16.9	16.4	17.1	17.3
4H	15.1	15.9	15.4	16.1	16.4	16.0	16.7	16.3	17.0	17.2
6H	15.1	15.7	15.4	16.0	16.3	15.9	16.6	16.2	16.9	17.1
8H	15.0	15.7	15.3	16.0	16.2	15.9	16.5	16.2	16.8	17.1
12H	15.0	15.6	15.3	15.9	16.2	15.8	16.4	16.1	16.7	17.0
4H 2H	15.2	15.9	15.5	16.1	16.4	16.0	16.7	16.3	17.0	17.2
3H	15.0	15.6	15.3	15.9	16.2	15.8	16.4	16.2	16.7	17.0
4H	14.9	15.4	15.2	15.8	16.1	15.7	16.3	16.1	16.6	17.0
6H	14.8	15.3	15.2	15.6	16.0	15.6	16.1	16.0	16.5	16.9
8H	14.7	15.2	15.1	15.6	16.0	15.6	16.0	16.0	16.4	16.8
12H	14.7	15.1	15.1	15.5	15.9	15.5	15.9	15.9	16.3	16.8
8H 4H	14.7	15.2	15.1	15.6	16.0	15.6	16.0	16.0	16.4	16.8
6H	14.6	15.0	15.1	15.4	15.9	15.4	15.8	15.9	16.3	16.7
8H	14.5	14.9	15.0	15.3	15.8	15.4	15.7	15.9	16.2	16.6
12H	14.5	14.8	15.0	15.2	15.8	15.3	15.6	15.8	16.1	16.6
12H 4H	14.7	15.1	15.1	15.5	15.9	15.5	15.9	15.9	16.3	16.8
6H	14.5	14.9	15.0	15.3	15.8	15.4	15.7	15.9	16.2	16.6
8H	14.5	14.8	15.0	15.2	15.8	15.3	15.6	15.8	16.1	16.6
Variations with the observer position at spacings(CIE Pub.117):										
S = 1.0H	+ 3.0 / -14.8					+ 3.6 / -17.0				
1.5H	+ 4.7 / -10.7					+ 5.5 / -12.0				
2.0H	+ 6.9 / -35.7					+ 7.2 / -34.5				

CIE Pub.117, 854.6 lm Total Lamp Luminous Flux Corrected (8log(F/F0) = -0.5)  
Area: 0.0034005 m2

C Range: 0 - 360DEG  
C Interval: 22.5DEG  
Test Speed: HIGH  
Temperature:25.3℃  
Operators:DAMIN  
Test Date:2023-10-24

γ Range: 0 - 180DEG  
γ Interval: 1.0DEG  
Test System:EVERFINE GO-2000A\_V1 SYSTEM V2.00.477  
Humidity:65.0%  
Test Distance:12.020m [K=1.0000]  
Remarks:

### UTILIZATION FACTORS TABLE

Test:U:230.29V I:0.0464A P:9.9921W PF:0.9344 Freq:50.00Hz Lamp Flux:854.6x1 lm		
NAME: R730 B4K	TYPE:	WEIGHT:
SPEC.:	DIM.:	SERIAL No.:
MFR.: EVERFINE	SUR.:	Shielding Angle:

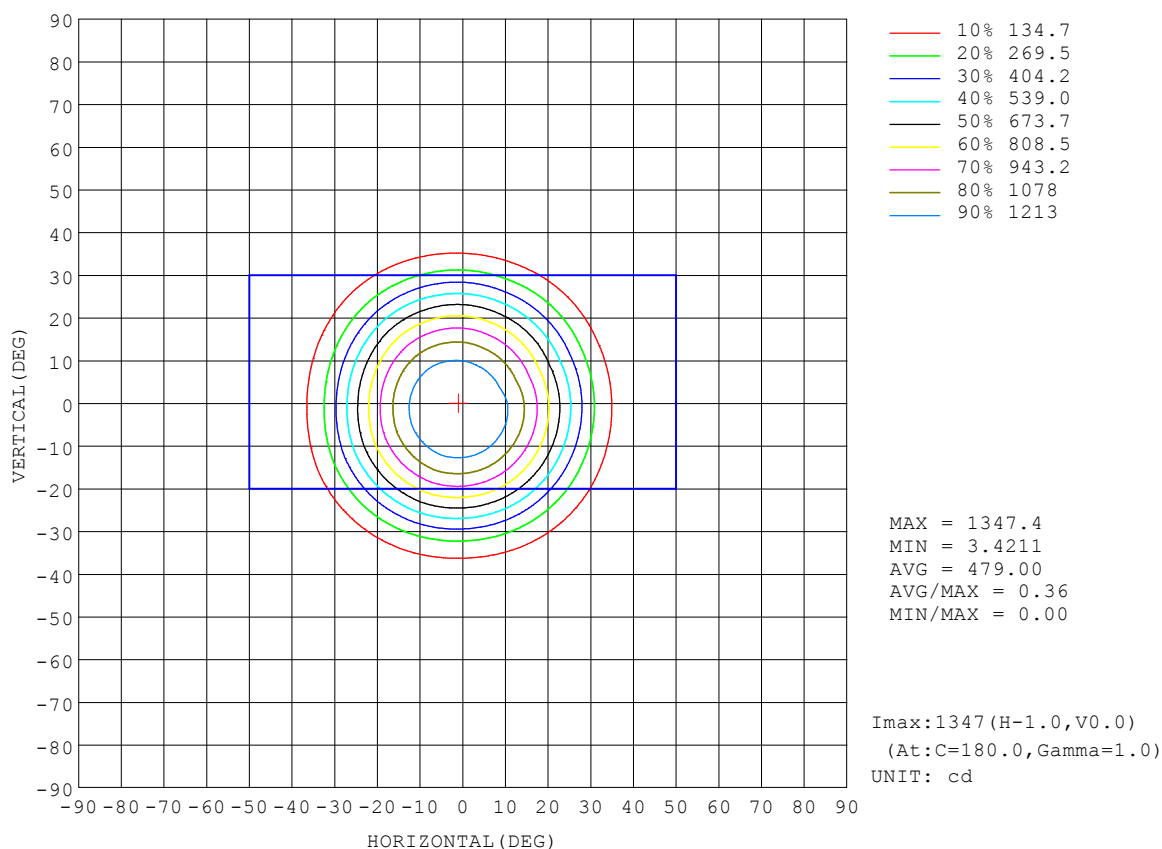
REFLECTANCE										
Ceiling	0.8	0.8	0.8	0.7	0.7	0.7	0.5	0.5	0.5	0
Walls	0.7	0.5	0.3	0.7	0.5	0.3	0.7	0.5	0.3	0
Working plane	0.2	0.2	0.2	0.2	0.2	0.2	0.2	0.2	0.2	0
ROOM INDEX	UTILIZATION FACTORS (PERCENT) $k(RI) \times RCR = 5$									
$k = 0.60$	88	82	78	87	81	78	86	81	78	74
0.80	95	89	86	94	89	86	93	88	85	81
1.00	99	94	90	98	93	90	97	93	89	85
1.25	103	98	95	102	98	94	100	96	93	89
1.50	106	101	98	105	100	98	102	99	96	92
2.00	108	104	101	107	103	100	104	101	99	93
2.50	110	106	103	108	105	102	105	102	100	94
3.00	112	108	106	110	107	104	106	104	102	95
4.00	114	111	109	111	109	107	107	106	104	97
5.00	115	113	111	112	111	109	108	107	106	97
ROOM INDEX	UF (total)									Direct
According to DIN EN 13032-2 2004			Suspended					SHRNOM = 1.25		

C Range: 0 - 360DEG  
C Interval: 22.5DEG  
Test Speed: HIGH  
Temperature: 25.3°C  
Operators: DAMIN  
Test Date: 2023-10-24

$\gamma$  Range: 0 - 180DEG  
 $\gamma$  Interval: 1.0DEG  
Test System: EVERFINE GO-2000A\_V1 SYSTEM V2.00.477  
Humidity: 65.0%  
Test Distance: 12.020m [K=1.0000]  
Remarks:

### ISOCANDELA DIAGRAM

Test:U:230.29V I:0.0464A P:9.9921W PF:0.9344 Freq:50.00Hz Lamp Flux:854.6x1 lm		
NAME: R730 B4K	TYPE:	WEIGHT:
SPEC.:	DIM.:	SERIAL No.:
MFR.: EVERFINE	SUR.:	Shielding Angle:



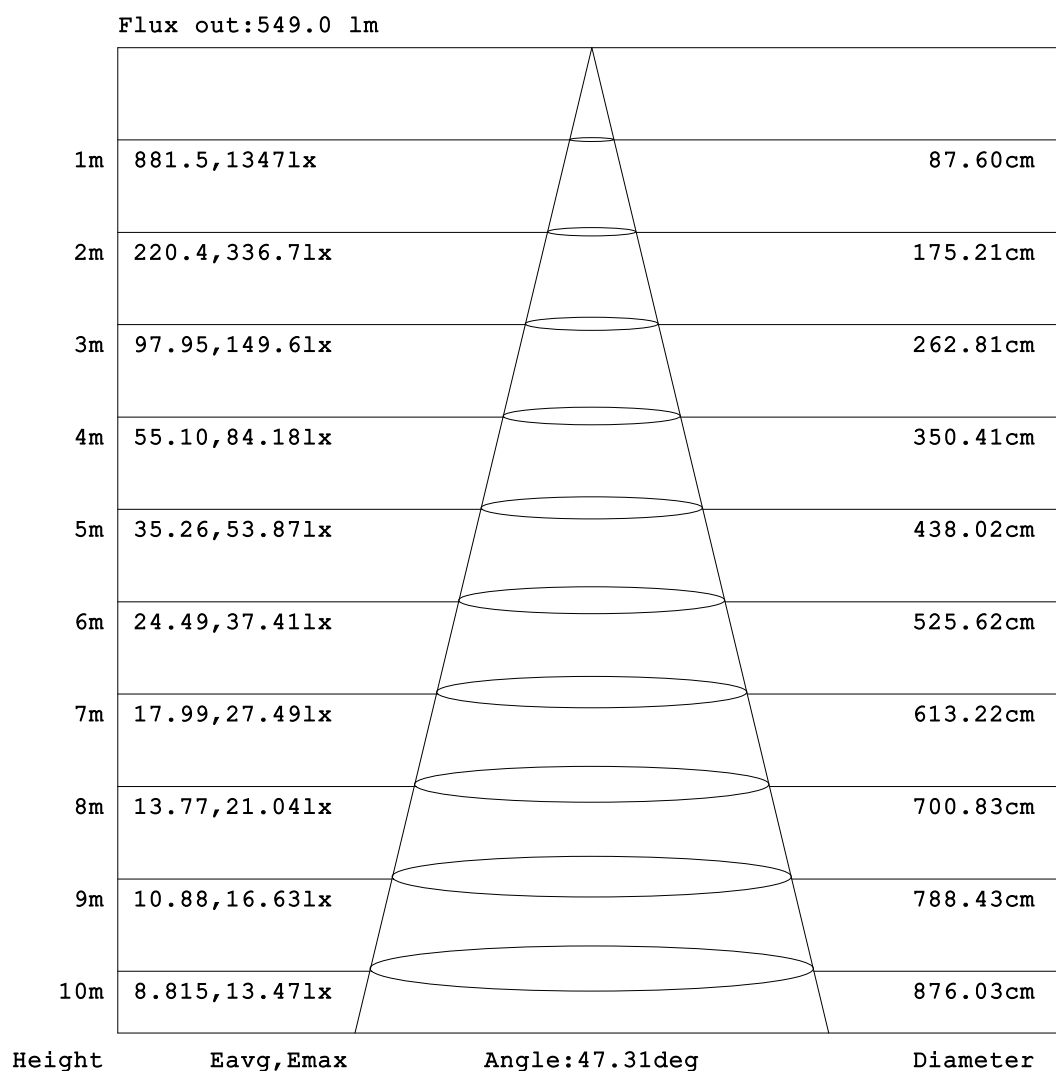
C Range: 0 - 360DEG  
C Interval: 22.5DEG  
Test Speed: HIGH  
Temperature:25.3°C  
Operators:DAMIN  
Test Date:2023-10-24

γ Range: 0 - 180DEG  
γ Interval: 1.0DEG  
Test System:EVERFINE GO-2000A\_V1 SYSTEM V2.00.477  
Humidity:65.0%  
Test Distance:12.020m [K=1.0000]  
Remarks:



**AAI Figure**

Test:U:230.29V I:0.0464A P:9.9921W PF:0.9344 Freq:50.00Hz Lamp Flux:854.6x1 lm		
NAME: R730 B4K	TYPE:	WEIGHT:
SPEC.:	DIM.:	SERIAL No.:
MFR.: EVERFINE	SUR.:	Shielding Angle:



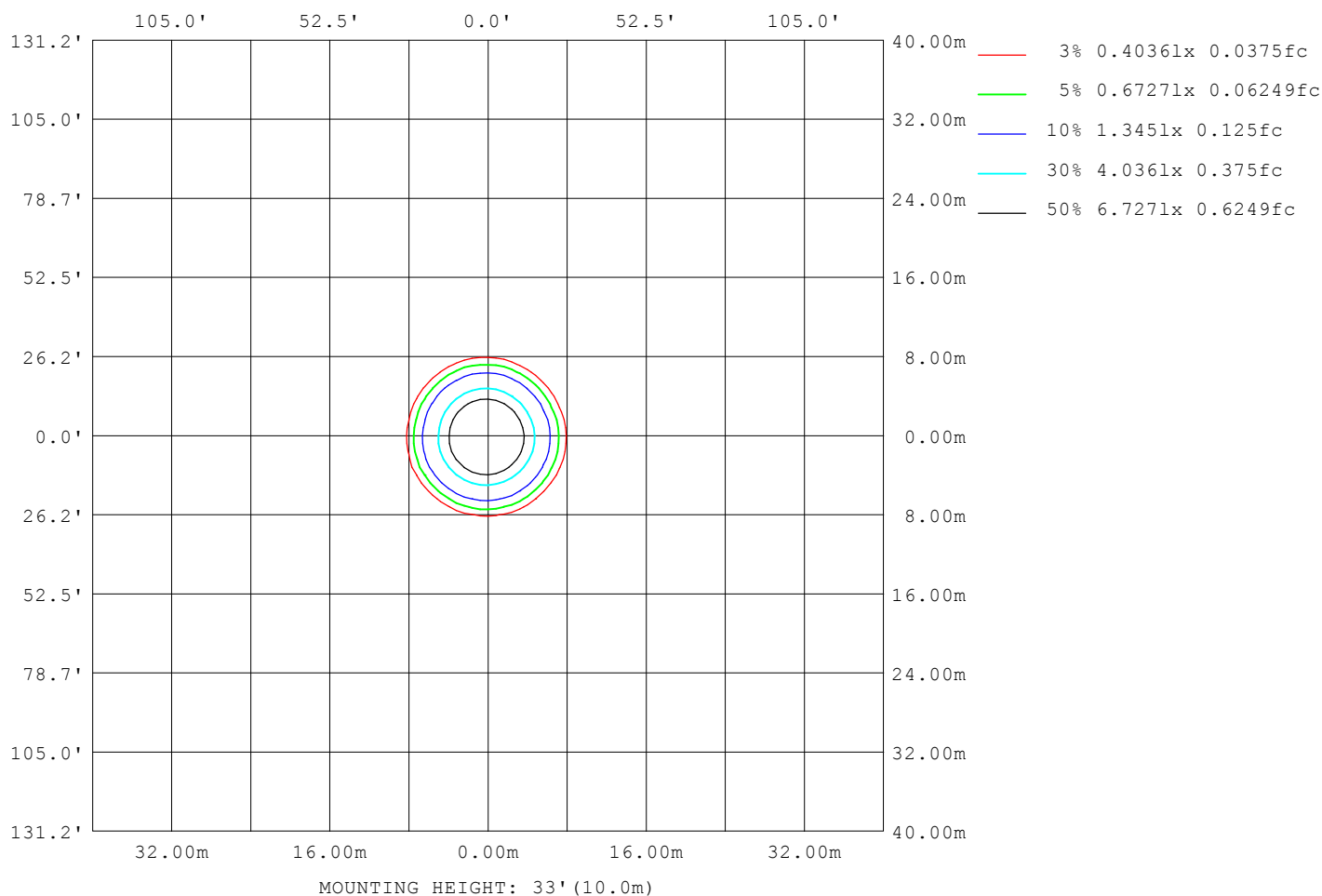
**Note:** The Curves indicate the illuminated area and the average illumination when the luminaire is at different distance.

C Range: 0 - 360DEG  
 C Interval: 22.5DEG  
 Test Speed: HIGH  
 Temperature: 25.3°C  
 Operators: DAMIN  
 Test Date: 2023-10-24

γ Range: 0 - 180DEG  
 γ Interval: 1.0DEG  
 Test System: EVERFINE GO-2000A\_V1 SYSTEM V2.00.477  
 Humidity: 65.0%  
 Test Distance: 12.020m [K=1.0000]  
 Remarks:

**ISOLUX DIAGRAM**

Test:U:230.29V I:0.0464A P:9.9921W PF:0.9344 Freq:50.00Hz Lamp Flux:854.6x1 lm		
NAME: R730 B4K	TYPE:	WEIGHT:
SPEC.:	DIM.:	SERIAL No.:
MFR.: EVERFINE	SUR.:	Shielding Angle:



C Range: 0 - 360DEG  
C Interval: 22.5DEG  
Test Speed: HIGH  
Temperature:25.3°C  
Operators:DAMIN  
Test Date:2023-10-24

γ Range: 0 - 180DEG  
γ Interval: 1.0DEG  
Test System:EVERFINE GO-2000A\_V1 SYSTEM V2.00.477  
Humidity:65.0%  
Test Distance:12.020m [K=1.0000]  
Remarks:

### LED Avg.L Report

Test:U:230.29V I:0.0464A P:9.9921W PF:0.9344 Freq:50.00Hz Lamp Flux:854.6x1 lm		
NAME: R730 B4K	TYPE:	WEIGHT:
SPEC.:	DIM.:	SERIAL No.:
MFR.: EVERFINE	SUR.:	Shielding Angle:

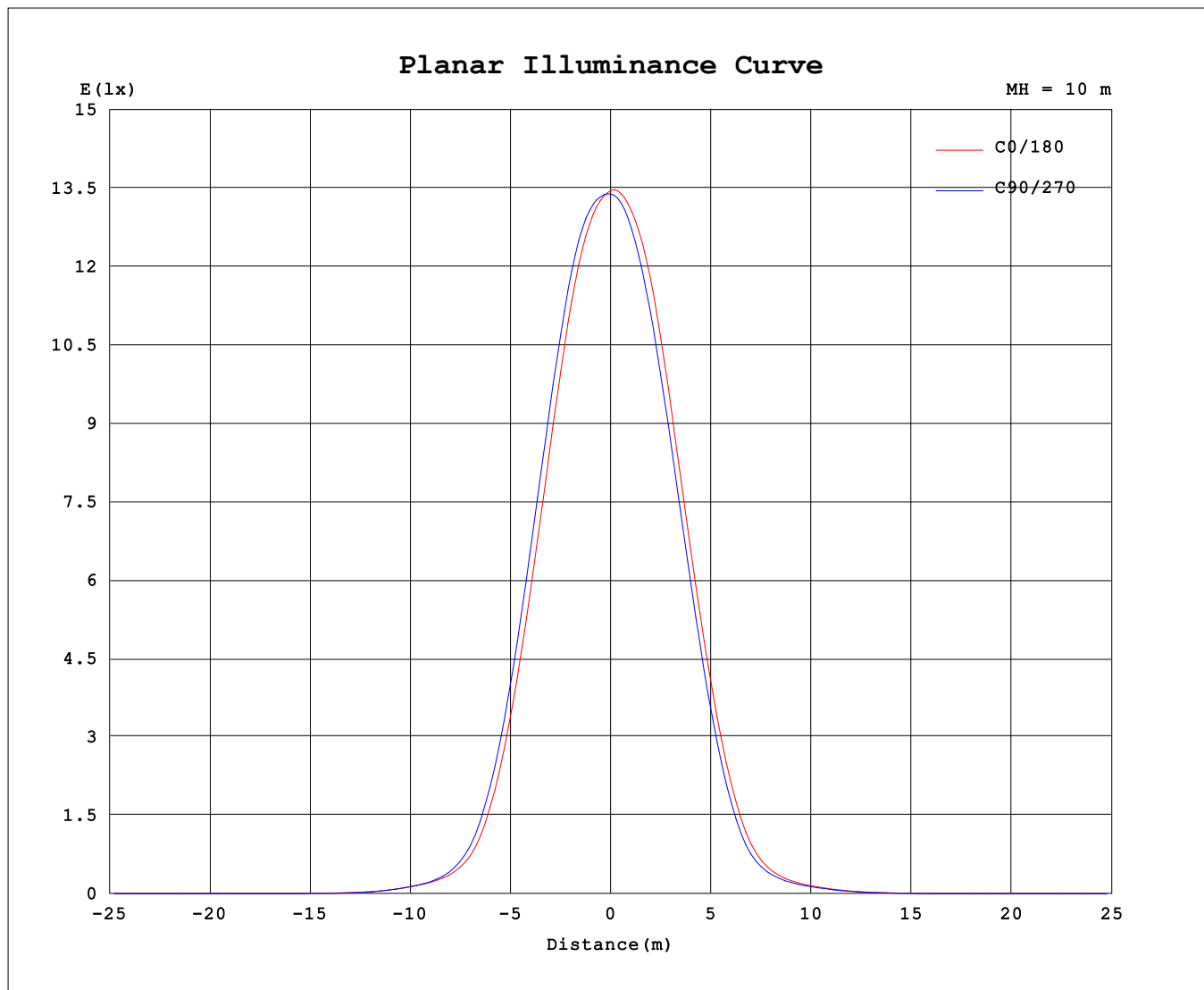
AvgL	cd/m2
L_0~180 (65) av	20
L_0~180 (75) av	5
L_0~180 (85) av	0
L_90~270 (65) av	29
L_90~270 (75) av	11
L_90~270 (85) av	16
L_45 (65) av	33
L_45 (75) av	11
L_45 (85) av	8

Standard: GB/T 29293-2012

C Range: 0 - 360DEG  
C Interval: 22.5DEG  
Test Speed: HIGH  
Temperature:25.3℃  
Operators:DAMIN  
Test Date:2023-10-24

γ Range: 0 - 180DEG  
γ Interval: 1.0DEG  
Test System:EVERFINE GO-2000A\_V1 SYSTEM V2.00.477  
Humidity:65.0%  
Test Distance:12.020m [K=1.0000]  
Remarks:

### Planar Illuminance Curve



C Range: 0 - 360DEG  
 C Interval: 22.5DEG  
 Test Speed: HIGH  
 Temperature: 25.3°C  
 Operators: DAMIN  
 Test Date: 2023-10-24

γ Range: 0 - 180DEG  
 γ Interval: 1.0DEG  
 Test System: EVERFINE GO-2000A\_V1 SYSTEM V2.00.477  
 Humidity: 65.0%  
 Test Distance: 12.020m [K=1.0000]  
 Remarks:

### LUMINOUS DISTRIBUTION INTENSITY DATA

Test:U:230.29V I:0.0464A P:9.9921W PF:0.9344 Freq:50.00Hz Lamp Flux:854.6x1 lm																	
NAME: R730 B4K									TYPE:						WEIGHT:		
SPEC.:									DIM.:						SERIAL No.:		
MFR.: EVERFINE									SUR.:						Shielding Angle:		

Table--1

UNIT: cd

C (DEG) γ (DEG)	0	22.5	45	67.5	90	112.5	135	157.5	180	202.5	225	247.5	270	292.5	315	337.5			
0	1345	1343	1341	1340	1339	1338	1337	1336	1345	1343	1341	1340	1339	1338	1337	1336			
5	1314	1321	1326	1332	1334	1334	1334	1333	1334	1327	1321	1313	1306	1299	1297	1297			
10	1226	1241	1256	1271	1280	1286	1283	1279	1273	1260	1246	1226	1210	1198	1194	1196			
15	1053	1073	1094	1118	1136	1152	1152	1147	1130	1114	1097	1072	1051	1030	1023	1021			
20	817	836	861	890	915	937	939	933	909	892	878	852	830	805	793	785			
25	555	571	593	622	647	674	680	680	651	635	623	597	575	546	532	527			
30	306	315	330	354	375	399	410	414	386	371	358	341	323	299	289	286			
35	133	140	148	160	168	180	186	191	174	167	160	149	138	126	121	121			
40	66.0	67.6	68.6	71.5	73.5	75.6	78.0	82.1	78.1	76.0	73.2	69.3	65.9	61.1	60.6	60.8			
45	37.3	37.3	36.9	37.6	38.4	39.7	42.0	44.6	43.2	43.1	42.0	40.4	38.1	35.9	35.6	35.2			
50	15.2	14.6	13.8	13.8	14.1	15.4	17.0	19.6	19.5	19.7	19.4	18.0	16.9	15.4	14.9	14.4			
55	5.10	4.88	4.57	4.11	4.00	4.96	5.75	6.86	7.47	7.48	7.02	5.88	5.45	5.09	4.98	4.64			
60	0.87	0.74	0.79	0.83	0.96	1.02	1.49	1.87	1.73	1.79	1.62	1.30	1.06	0.97	0.86	0.76			
65	0.05	0.00	0.07	0.01	0.08	0.00	0.12	0.02	0.01	0.11	0.00	0.09	0.01	0.06	0.00	0.04			
70	0.02	0.00	0.02	0.00	0.04	0.00	0.05	0.00	0.00	0.05	0.00	0.04	0.01	0.03	0.00	0.02			
75	0.01	0.00	0.02	0.00	0.01	0.00	0.02	0.00	0.00	0.03	0.00	0.02	0.01	0.01	0.00	0.02			
80	0.00	0.00	0.01	0.00	0.00	0.00	0.01	0.00	0.00	0.02	0.00	0.01	0.01	0.01	0.00	0.00			
85	0.00	0.00	0.00	0.00	0.00	0.00	0.00	0.00	0.00	0.01	0.01	0.00	0.01	0.01	0.00	0.00			
90	0.00	0.01	0.00	0.01	0.00	0.01	0.00	0.02	0.01	0.01	0.01	0.00	0.01	0.01	0.01	0.00			
95	0.01	0.04	0.01	0.03	0.00	0.03	0.00	0.03	0.04	0.01	0.04	0.00	0.05	0.01	0.03	0.00			
100	0.01	0.08	0.01	0.07	0.00	0.06	0.01	0.07	0.07	0.01	0.07	0.00	0.08	0.01	0.08	0.01			
105	0.09	0.15	0.06	0.14	0.05	0.12	0.03	0.12	0.12	0.01	0.11	0.02	0.12	0.03	0.14	0.05			
110	0.21	0.29	0.19	0.27	0.16	0.24	0.14	0.23	0.22	0.16	0.22	0.13	0.23	0.15	0.24	0.17			
115	0.51	0.58	0.46	0.54	0.43	0.48	0.36	0.45	0.39	0.32	0.41	0.33	0.46	0.39	0.50	0.43			
120	1.00	1.07	0.94	0.99	0.87	0.89	0.77	0.85	0.74	0.67	0.78	0.74	0.84	0.81	0.91	0.83			
125	1.71	1.77	1.62	1.64	1.49	1.50	1.39	1.45	1.29	1.22	1.35	1.34	1.47	1.43	1.57	1.47			
130	2.66	2.67	2.53	2.53	2.37	2.36	2.22	2.28	2.05	2.01	2.16	2.15	2.32	2.30	2.41	2.34			
135	3.73	3.76	3.60	3.58	3.40	3.37	3.27	3.29	3.00	2.99	3.15	3.18	3.34	3.35	3.45	3.38			
140	4.94	4.96	4.79	4.75	4.56	4.52	4.42	4.44	4.13	4.11	4.30	4.34	4.52	4.53	4.64	4.57			
145	6.21	6.23	6.05	6.01	5.82	5.79	5.66	5.67	5.35	5.34	5.53	5.58	5.78	5.79	5.88	5.79			
150	7.46	7.47	7.31	7.27	7.08	7.05	6.91	6.92	6.60	6.57	6.77	6.83	7.02	7.02	7.10	7.02			
155	8.56	8.59	8.42	8.42	8.24	8.23	8.09	8.10	7.78	7.76	7.92	7.94	8.12	8.09	8.18	8.08			
160	9.42	9.46	9.29	9.31	9.16	9.18	9.02	9.08	8.79	8.74	8.87	8.85	9.01	8.94	9.03	8.96			
165	10.0	10.1	9.92	9.95	9.88	9.88	9.73	9.81	9.57	9.50	9.63	9.57	9.71	9.58	9.69	9.59			
170	10.4	10.5	10.4	10.5	10.4	10.4	10.2	10.3	10.2	10.1	10.2	10.1	10.3	10.1	10.2	10.1			
175	10.7	10.8	10.7	10.8	10.7	10.7	10.6	10.6	10.7	10.6	10.7	10.6	10.7	10.5	10.6	10.5			
180	10.8	10.9	10.9	10.9	10.9	10.8	10.8	10.8	10.8	10.8	10.9	10.8	10.9	10.8	10.8	10.8			

C Range: 0 - 360DEG  
C Interval: 22.5DEG  
Test Speed: HIGH  
Temperature:25.3℃  
Operators:DAMIN  
Test Date:2023-10-24

γ Range: 0 - 180DEG  
γ Interval: 1.0DEG  
Test System:EVERFINE GO-2000A\_V1 SYSTEM V2.00.477  
Humidity:65.0%  
Test Distance:12.020m [K=1.0000]  
Remarks: