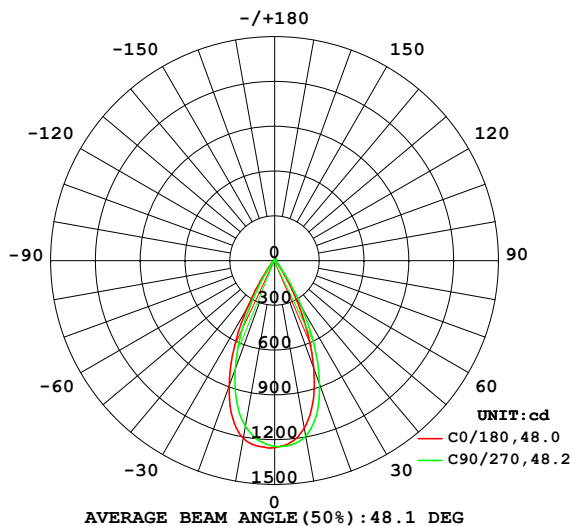


LUMINAIRE PHOTOMETRIC TEST REPORT

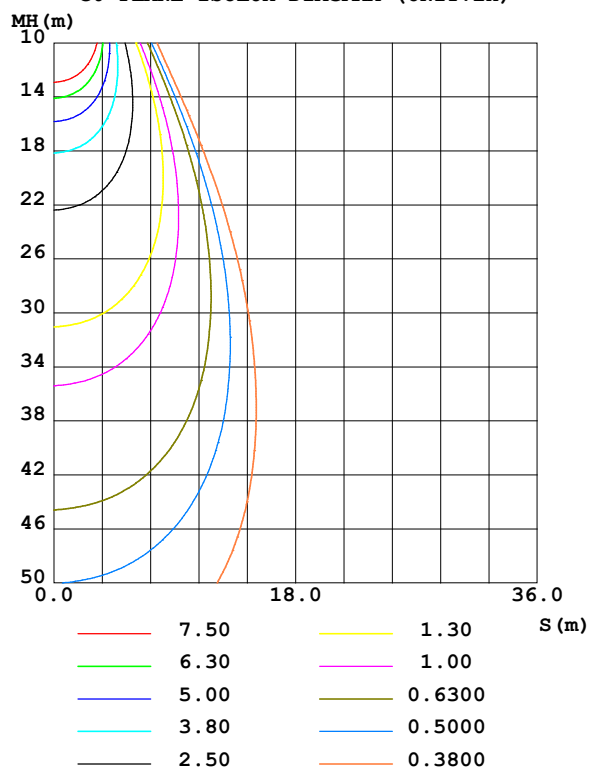
Test:U:230.31V I:0.0463A P:9.9664W PF:0.9342 Freq:50.00Hz Lamp Flux:816.226x1 lm		
NAME: R750 W27K2	TYPE:	WEIGHT:
SPEC.:	DIM.:	SERIAL No.:
MFR.: EVERFINE	SUR.:	Shielding Angle:

DATA OF LAMP		PHOTOMETRIC DATA				Eff: 81.90 lm/W
MODEL		I _{max} (cd)	1255	S/MH(C0/180)		0.77
NOMINAL POWER(W)	9.9	LOR(%)	100.0	S/MH(C90/270)		0.71
RATED VOLTAGE(V)	230	TOTAL FLUX(lm)	816.23	η UP,DN(C0-180)		0.9,51.0
NOMINAL FLUX(lm)	816.226	CIE CLASS	DIRECT	η UP,DN(C180-360)		0.9,47.1
LAMPS INSIDE	1	η up (%)	1.8	CIBSE SHR NOM		0.75
TEST VOLTAGE(V)	230	η down (%)	98.2	CIBSE SHR MAX		0.75

LUMINOUS INTENSITY DISTRIBUTION DIAGRAM



C0 PLANE ISOLUX DIAGRAM (UNIT:lx)



C Range: 0 - 360DEG
C Interval: 22.5DEG
Test Speed: HIGH
Temperature:25.3℃
Operators:DAMIN
Test Date:2023-10-25

γ Range: 0 - 180DEG
γ Interval: 1.0DEG
Test System:EVERFINE GO-2000A_V1 SYSTEM V2.00.477
Humidity:65.0%
Test Distance:12.020m [K=1.0000]
Remarks:

ZONAL FLUX DIAGRAM

ZONAL FLUX DIAGRAM:

γ	C0	C45	C90	C135	C180	C225	C270	C315	γ	Φ zone	Φ total	%lum, lamp
10	1141	1171	1194	1205	1209	1175	1128	1106	0- 10	115.3	115.3	14.1,14.1
20	764.9	822.6	881.6	913.3	892.6	846.7	775.2	725.4	10- 20	284.1	399.4	48.9,48.9
30	268.6	309.8	368.9	405.2	377.4	332.7	279.8	244.6	20- 30	258.7	658.0	80.6,80.6
40	57.14	62.16	69.63	77.64	73.59	62.64	53.46	51.24	30- 40	95.98	754.0	92.4,92.4
50	18.93	19.20	21.17	23.65	23.27	21.10	18.11	17.52	40- 50	29.72	783.7	96,96
60	6.233	6.393	6.422	7.002	6.821	6.420	6.450	6.169	50- 60	9.842	793.6	97.2,97.2
70	3.237	3.293	3.433	3.510	3.348	3.262	3.151	3.048	60- 70	4.717	798.3	97.8,97.8
80	1.361	1.353	1.520	1.541	1.463	1.321	1.319	1.122	70- 80	2.444	800.7	98.1,98.1
90	0.0564	0.0470	0.0659	0.0851	0.0377	0.0376	0.0469	0.0281	80- 90	0.6164	801.4	98.2,98.2
100	0.0375	0.0469	0.0469	0.0469	0.1032	0.1032	0.1125	0.1125	90-100	0.0606	801.4	98.2,98.2
110	0.2243	0.1966	0.1592	0.1499	0.2440	0.2445	0.2814	0.3005	100-110	0.1387	801.6	98.2,98.2
120	0.9937	0.8906	0.7685	0.7221	0.7129	0.7794	0.8637	0.9384	110-120	0.4651	802.0	98.3,98.3
130	2.570	2.390	2.165	2.016	1.914	2.074	2.272	2.384	120-130	1.295	803.3	98.4,98.4
140	4.769	4.528	4.220	4.023	3.856	4.089	4.353	4.494	130-140	2.465	805.8	98.7,98.7
150	7.107	6.874	6.592	6.394	6.183	6.399	6.697	6.812	140-150	3.398	809.2	99.1,99.1
160	8.909	8.759	8.590	8.401	8.263	8.386	8.546	8.582	150-160	3.518	812.7	99.6,99.6
170	9.847	9.773	9.724	9.584	9.605	9.642	9.698	9.652	160-170	2.579	815.3	99.9,99.9
180	10.20	10.20	10.21	10.08	10.20	10.21	10.22	10.15	170-180	0.9460	816.2	100,100
DEG	LUMINOUS INTENSITY:cd									UNIT:lm		

Conical surface Flux(90deg): 772.05 lm

%lum = 94.6%

%lamp = 94.6%

Conical surface Flux(120deg): 793.58 lm

%lum = 97.2%

%lamp = 97.2%

C Range: 0 - 360DEG
C Interval: 22.5DEG
Test Speed: HIGH
Temperature:25.3℃
Operators:DAMIN
Test Date:2023-10-25

γ Range: 0 - 180DEG
γ Interval: 1.0DEG
Test System:EVERFINE GO-2000A_V1 SYSTEM V2.00.477
Humidity:65.0%
Test Distance:12.020m [K=1.0000]
Remarks:

LUMINANCE LIMITATION CURVES

Test:U:230.31V I:0.0463A P:9.9664W PF:0.9342 Freq:50.00Hz

Lamp Flux:816.226x1 lm

NAME: R750 W27K2

TYPE:

WEIGHT:

SPEC.:

DIM.:

SERIAL No.:

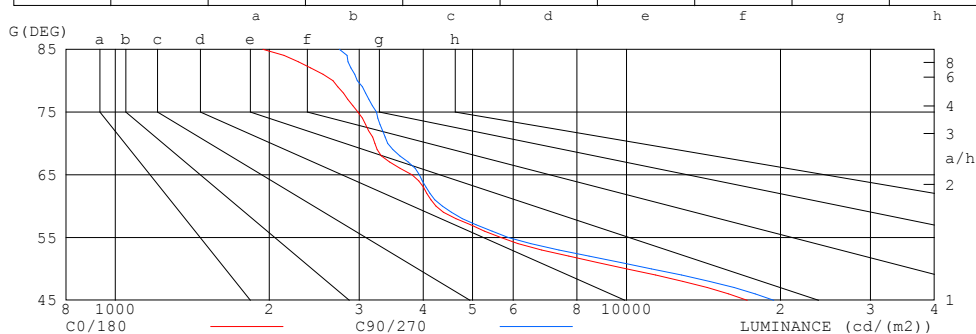
MFR.: EVERFINE

SUR.:

Shielding Angle:

LUMINANCE LIMITATION CURVES

GLARE	CLASS	ILLUMINANCE (lx)							
1.15	A	2000	1000	500	<=300				
1.50	B		2000	1000	500	<=300			
1.85	C			2000	1000	500	<=300		
2.20	D				2000	1000	500	<=300	
2.55	E					2000	1000	500	<=300



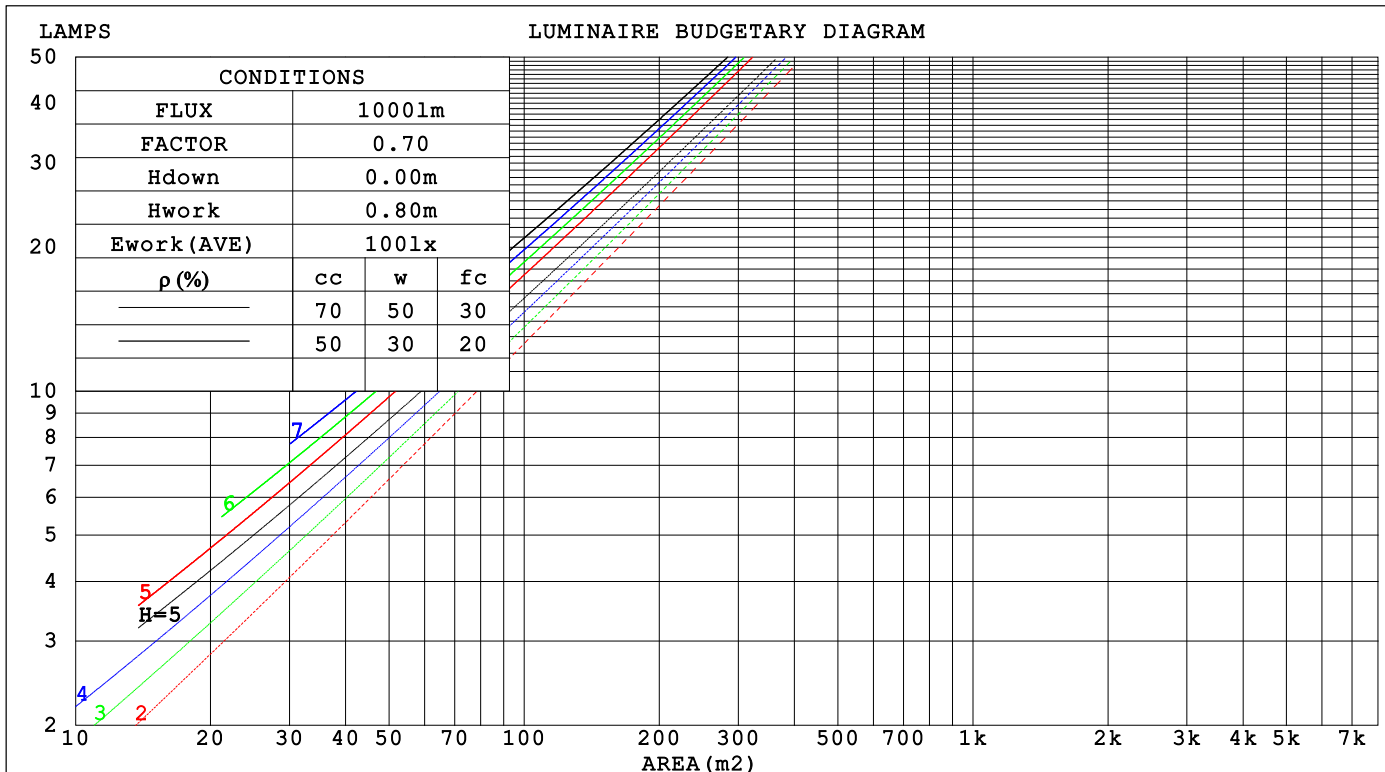
C Range: 0 - 360DEG
C Interval: 22.5DEG
Test Speed: HIGH
Temperature:25.3°C
Operators:DAMIN
Test Date:2023-10-25

γ Range: 0 - 180DEG
 γ Interval: 1.0DEG
 γ Test System:EVERFINE GO-2000A_V1 SYSTEM V2.00.477
Humidity:65.0%
Test Distance:12.020m [K=1.0000]
Remarks:

CU AND LUMINAIRE BUDGETARY ESTIMATE DIAGRAM

Test:U:230.31V I:0.0463A P:9.9664W PF:0.9342 Freq:50.00Hz Lamp Flux:816.226x1 lm		
NAME: R750 W27K2	TYPE:	WEIGHT:
SPEC.:	DIM.:	SERIAL No.:
MFR.: EVERFINE	SUR.:	Shielding Angle:

pcc	80%			70%			50%			30%			10%			0
pw	50%	30%	10%	50%	30%	10%	50%	30%	10%	50%	30%	10%	50%	30%	10%	0
pfc	20%			20%			20%			20%			20%			0
RCR	RCR:Room Cavity Ratio															



C Range: 0 - 360DEG
C Interval: 22.5DEG
Test Speed: HIGH
Temperature:25.3℃
Operators:DAMIN
Test Date:2023-10-25

γ Range: 0 - 180DEG
γ Interval: 1.0DEG
Test System:EVERFINE GO-2000A_V1 SYSTEM V2.00.477
Humidity:65.0%
Test Distance:12.020m [K=1.0000]
Remarks:

WEC AND CCEC

Test:U:230.31V I:0.0463A P:9.9664W PF:0.9342 Freq:50.00Hz Lamp Flux:816.226x1 lm		
NAME: R750 W27K2	TYPE:	WEIGHT:
SPEC.:	DIM.:	SERIAL No.:
MFR.: EVERFINE	SUR.:	Shielding Angle:

pcc	80%			70%			50%			30%			10%			0	
pw	50%	30%	10%	50%	30%	10%	50%	30%	10%	50%	30%	10%	50%	30%	10%	0	
pfc	20%			20%			20%			20%			20%			0	
RCR	RCR:Room Cavity Ratio						Wall Exitance Coefficients(WEC)										
0.0																	
1.0	.170	.097	.031	.163	.093	.030	.150	.086	.027	.137	.079	.025	.126	.073	.023		
2.0	.162	.089	.027	.155	.086	.026	.144	.080	.025	.133	.075	.023	.124	.070	.022		
3.0	.153	.081	.024	.148	.079	.024	.138	.075	.023	.129	.071	.022	.120	.067	.021		
4.0	.145	.075	.022	.140	.073	.022	.132	.070	.021	.124	.067	.020	.117	.063	.019		
5.0	.138	.070	.020	.134	.069	.020	.126	.066	.019	.119	.063	.019	.113	.060	.018		
6.0	.131	.066	.019	.128	.064	.019	.121	.062	.018	.115	.060	.018	.109	.057	.017		
7.0	.125	.062	.018	.122	.061	.017	.116	.059	.017	.111	.057	.017	.106	.055	.016		
8.0	.120	.058	.016	.117	.058	.016	.112	.056	.016	.107	.054	.016	.102	.052	.015		
9.0	.115	.055	.015	.112	.055	.015	.107	.053	.015	.103	.052	.015	.099	.050	.015		
10.0	.110	.053	.015	.108	.052	.015	.103	.051	.014	.099	.049	.014	.096	.048	.014		

pcc	80%			70%			50%			30%			10%			0	
pw	50%	30%	10%	50%	30%	10%	50%	30%	10%	50%	30%	10%	50%	30%	10%	0	
pfc	20%			20%			20%			20%			20%			0	
RCR	RCR:Room Cavity Ratio						Ceiling Cavity Exitance Coefficients (CCEC)										
0.0	.204	.204	.204	.175	.175	.175	.119	.119	.119	.068	.068	.068	.022	.022	.022		
1.0	.185	.171	.159	.158	.147	.137	.108	.101	.095	.062	.059	.055	.020	.019	.018		
2.0	.169	.147	.128	.145	.126	.111	.099	.087	.077	.057	.051	.045	.018	.016	.015		
3.0	.156	.128	.105	.134	.110	.091	.092	.077	.064	.053	.045	.038	.017	.015	.012		
4.0	.145	.113	.088	.125	.098	.077	.086	.068	.054	.050	.040	.032	.016	.013	.010		
5.0	.136	.101	.075	.117	.088	.065	.081	.061	.046	.047	.036	.027	.015	.012	.009		
6.0	.129	.092	.065	.111	.079	.057	.076	.056	.040	.044	.033	.024	.014	.011	.008		
7.0	.122	.084	.058	.105	.073	.050	.072	.051	.036	.042	.030	.021	.014	.010	.007		
8.0	.116	.078	.052	.100	.067	.045	.069	.047	.032	.040	.028	.019	.013	.009	.006		
9.0	.111	.073	.047	.096	.063	.041	.066	.044	.029	.039	.026	.017	.012	.009	.006		
10.0	.106	.068	.043	.092	.059	.037	.064	.042	.026	.037	.025	.016	.012	.008	.005		

C Range: 0 - 360DEG
C Interval: 22.5DEG
Test Speed: HIGH
Temperature:25.3℃
Operators:DAMIN
Test Date:2023-10-25

γ Range: 0 - 180DEG
γ Interval: 1.0DEG
Test System:EVERFINE GO-2000A_V1 SYSTEM V2.00.477
Humidity:65.0%
Test Distance:12.020m [K=1.0000]
Remarks:

UGR(Unified Glare Rating) Table

Test:U:230.31V I:0.0463A P:9.9664W PF:0.9342 Freq:50.00Hz Lamp Flux:816.226x1 lm										
NAME: R750 W27K2					TYPE:			WEIGHT:		
SPEC.:					DIM.:			SERIAL No.:		
MFR.: EVERFINE					SUR.:			Shielding Angle:		
ceiling/cavity	0.7	0.7	0.5	0.5	0.3	0.7	0.7	0.5	0.5	0.3
walls	0.5	0.3	0.5	0.3	0.3	0.5	0.3	0.5	0.3	0.3
working plane	0.2	0.2	0.2	0.2	0.2	0.2	0.2	0.2	0.2	0.2
Room dimensions	Viewed crosswise					Viewed endwise				
x = 2H y = 2H	15.7	16.5	15.9	16.7	16.9	16.9	17.8	17.1	18.0	18.1
3H	15.6	16.4	15.9	16.7	16.9	16.8	17.6	17.1	17.9	18.1
4H	15.6	16.4	15.9	16.6	16.9	16.8	17.6	17.1	17.8	18.1
6H	15.6	16.3	15.9	16.6	16.9	16.8	17.5	17.1	17.8	18.0
8H	15.6	16.3	15.9	16.6	16.9	16.8	17.5	17.1	17.7	18.0
12H	15.6	16.2	15.9	16.5	16.8	16.7	17.4	17.1	17.7	18.0
4H 2H	15.5	16.3	15.8	16.5	16.8	16.7	17.5	17.0	17.7	18.0
3H	15.5	16.2	15.9	16.5	16.8	16.7	17.3	17.0	17.6	17.9
4H	15.6	16.2	15.9	16.5	16.8	16.7	17.3	17.1	17.6	18.0
6H	15.6	16.1	16.0	16.5	16.8	16.7	17.2	17.1	17.6	18.0
8H	15.6	16.1	16.0	16.4	16.8	16.7	17.2	17.1	17.5	18.0
12H	15.5	16.0	16.0	16.4	16.8	16.7	17.1	17.1	17.5	17.9
8H 4H	15.5	16.0	15.9	16.4	16.8	16.6	17.1	17.0	17.5	17.9
6H	15.5	15.9	16.0	16.4	16.8	16.6	17.0	17.1	17.4	17.9
8H	15.5	15.9	16.0	16.3	16.8	16.6	17.0	17.1	17.4	17.9
12H	15.5	15.8	16.0	16.3	16.8	16.6	16.9	17.1	17.4	17.9
12H 4H	15.4	15.9	15.9	16.3	16.7	16.5	17.0	17.0	17.4	17.8
6H	15.5	15.8	16.0	16.3	16.8	16.6	16.9	17.1	17.4	17.9
8H	15.5	15.8	16.0	16.3	16.8	16.6	16.9	17.1	17.4	17.9
Variations with the observer position at spacings(CIE Pub.117):										
S = 1.0H	+ 1.9 / - 3.5					+ 2.9 / - 4.0				
1.5H	+ 3.2 / - 3.5					+ 4.4 / - 4.0				
2.0H	+ 3.9 / - 2.3					+ 4.3 / - 2.3				

CIE Pub.117, 816.2 lm Total Lamp Luminous Flux Corrected (8log(F/F0) = -0.7)
Area: 0.0029417 m2

C Range: 0 - 360DEG
C Interval: 22.5DEG
Test Speed: HIGH
Temperature:25.3°C
Operators:DAMIN
Test Date:2023-10-25

γ Range: 0 - 180DEG
γ Interval: 1.0DEG
Test System:EVERFINE GO-2000A_V1 SYSTEM V2.00.477
Humidity:65.0%
Test Distance:12.020m [K=1.0000]
Remarks:

UTILIZATION FACTORS TABLE

Test:U:230.31V I:0.0463A P:9.9664W PF:0.9342 Freq:50.00Hz Lamp Flux:816.226x1 lm		
NAME: R750 W27K2	TYPE:	WEIGHT:
SPEC.:	DIM.:	SERIAL No.:
MFR.: EVERFINE	SUR.:	Shielding Angle:

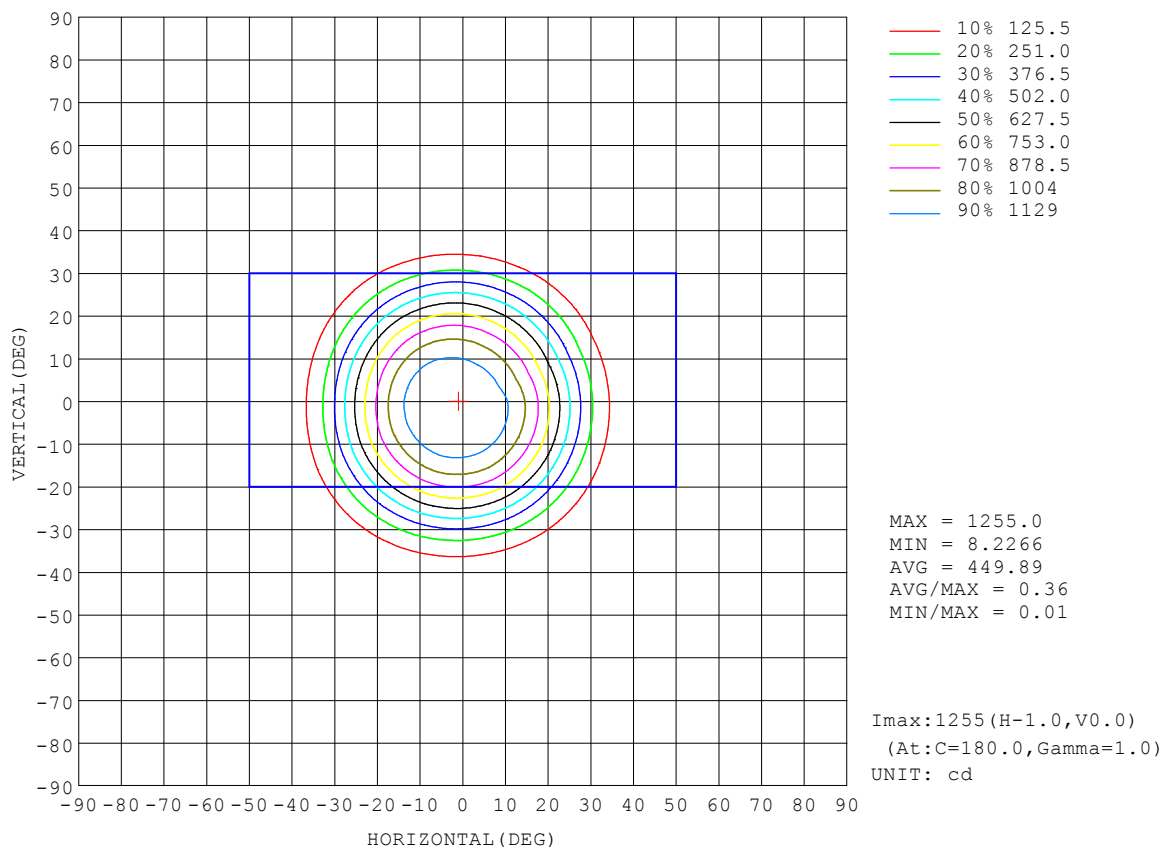
REFLECTANCE										
Ceiling	0.8	0.8	0.8	0.7	0.7	0.7	0.5	0.5	0.5	0
Walls	0.7	0.5	0.3	0.7	0.5	0.3	0.7	0.5	0.3	0
Working plane	0.2	0.2	0.2	0.2	0.2	0.2	0.2	0.2	0.2	0
ROOM INDEX	UTILIZATION FACTORS (PERCENT) $k(RI) \times RCR = 5$									
$k = 0.60$	87	80	77	86	80	77	85	80	76	73
0.80	94	88	85	93	88	84	92	87	84	80
1.00	99	93	89	98	92	89	96	92	88	84
1.25	103	97	94	101	97	93	99	95	92	88
1.50	105	101	97	104	100	97	101	98	95	91
2.00	108	104	101	106	103	100	103	100	98	92
2.50	110	106	103	108	104	102	105	102	100	93
3.00	111	108	105	109	106	104	106	103	101	94
4.00	113	110	108	111	109	107	107	105	104	96
5.00	115	112	110	112	110	109	108	107	105	97
ROOM INDEX	UF (total)									Direct
According to DIN EN 13032-2 2004			Suspended					SHRNOM = 1.25		

C Range: 0 - 360DEG
C Interval: 22.5DEG
Test Speed: HIGH
Temperature: 25.3°C
Operators: DAMIN
Test Date: 2023-10-25

γ Range: 0 - 180DEG
 γ Interval: 1.0DEG
Test System: EVERFINE GO-2000A_V1 SYSTEM V2.00.477
Humidity: 65.0%
Test Distance: 12.020m [K=1.0000]
Remarks:

ISOCANDELA DIAGRAM

Test:U:230.31V I:0.0463A P:9.9664W PF:0.9342 Freq:50.00Hz Lamp Flux:816.226x1 lm		
NAME: R750 W27K2	TYPE:	WEIGHT:
SPEC.:	DIM.:	SERIAL No.:
MFR.: EVERFINE	SUR.:	Shielding Angle:

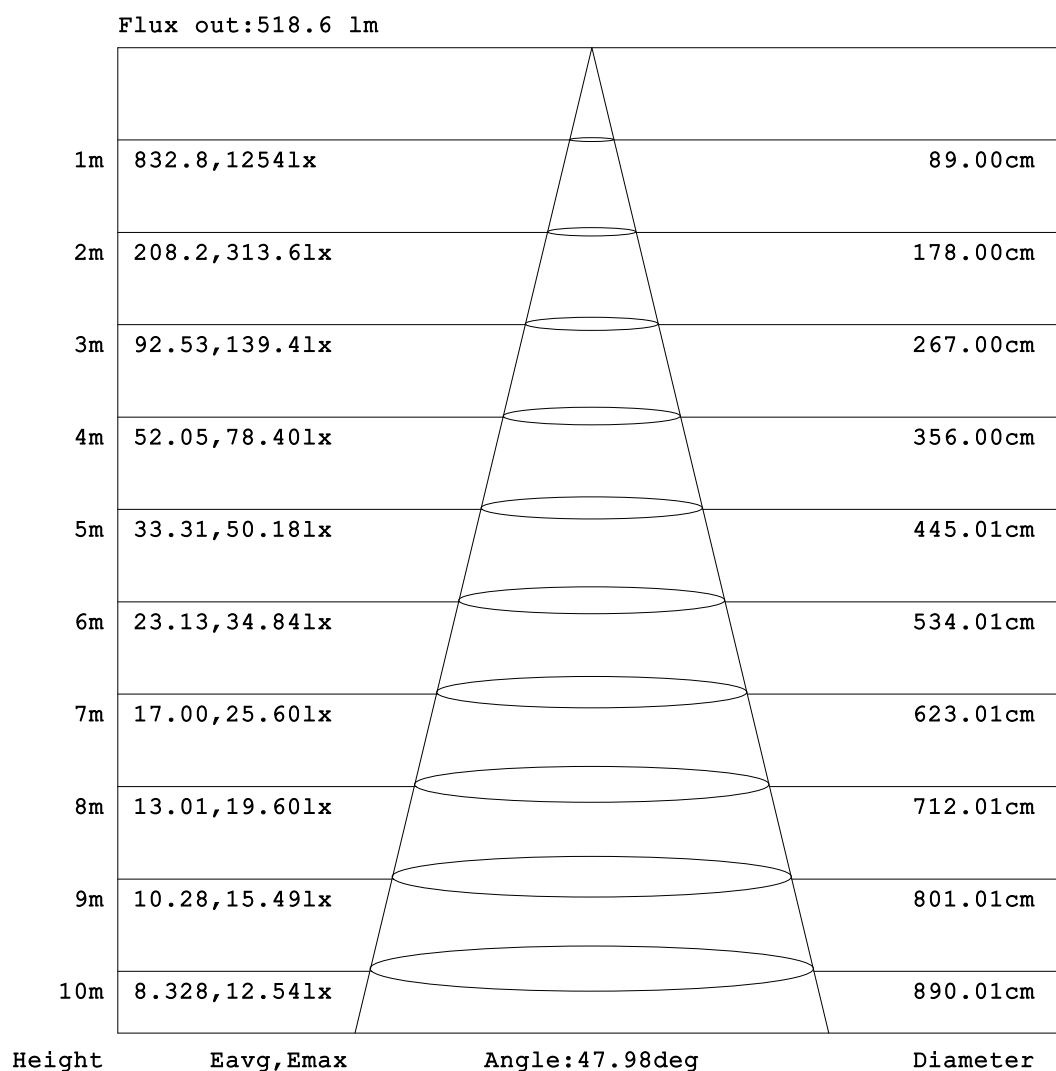


C Range: 0 - 360DEG
C Interval: 22.5DEG
Test Speed: HIGH
Temperature:25.3°C
Operators:DAMIN
Test Date:2023-10-25

γ Range: 0 - 180DEG
γ Interval: 1.0DEG
Test System:EVERFINE GO-2000A_V1 SYSTEM V2.00.477
Humidity:65.0%
Test Distance:12.020m [K=1.0000]
Remarks:

AAI Figure

Test:U:230.31V I:0.0463A P:9.9664W PF:0.9342 Freq:50.00Hz Lamp Flux:816.226x1 lm		
NAME: R750 W27K2	TYPE:	WEIGHT:
SPEC.:	DIM.:	SERIAL No.:
MFR.: EVERFINE	SUR.:	Shielding Angle:



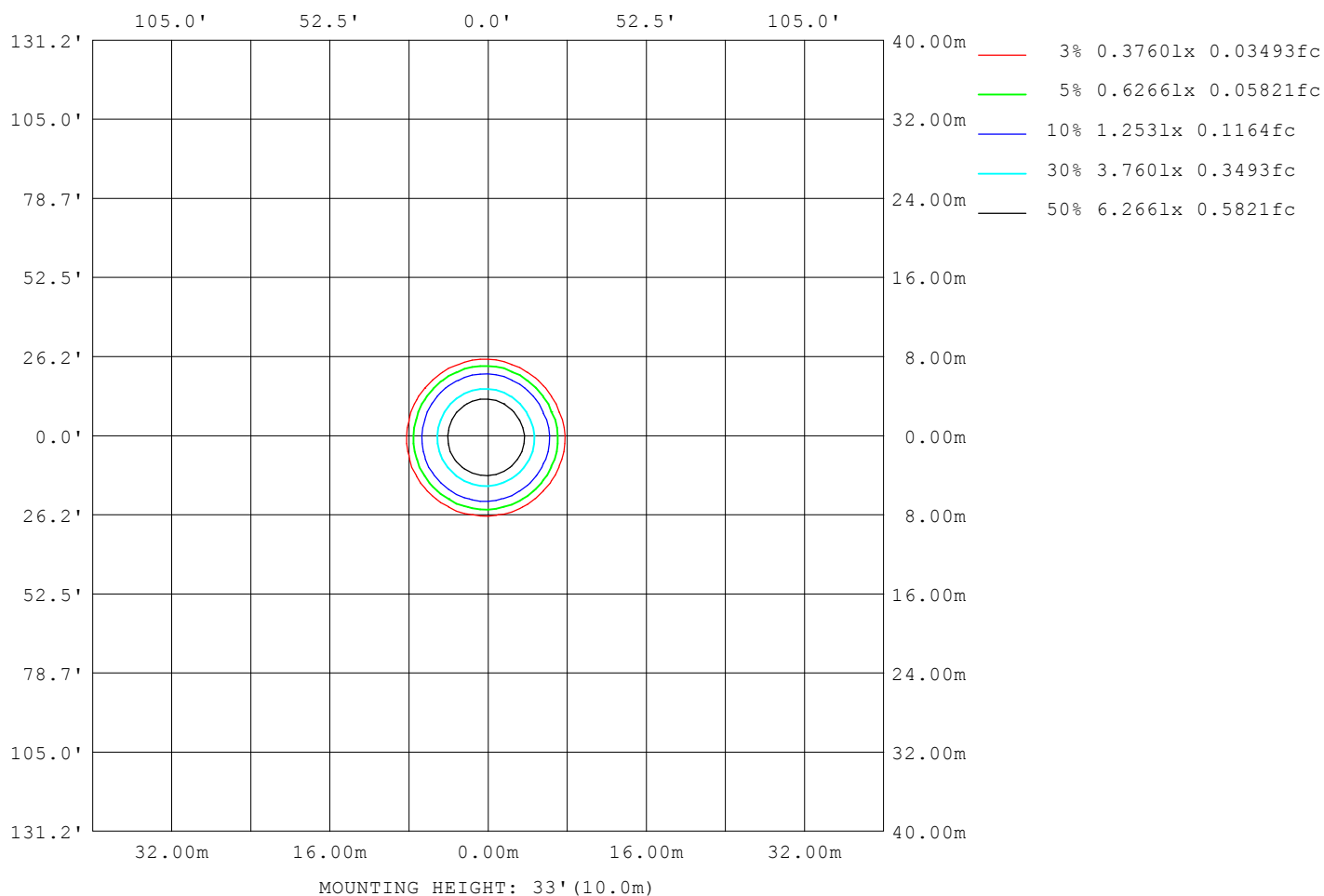
Note:The Curves indicate the illuminated area and the average illumination when the luminaire is at different distance.

C Range: 0 - 360DEG
 C Interval: 22.5DEG
 Test Speed: HIGH
 Temperature:25.3°C
 Operators:DAMIN
 Test Date:2023-10-25

γ Range: 0 - 180DEG
 γ Interval: 1.0DEG
 Test System:EVERFINE GO-2000A_V1 SYSTEM V2.00.477
 Humidity:65.0%
 Test Distance:12.020m [K=1.0000]
 Remarks:

ISOLUX DIAGRAM

Test:U:230.31V I:0.0463A P:9.9664W PF:0.9342 Freq:50.00Hz Lamp Flux:816.226x1 lm		
NAME: R750 W27K2	TYPE:	WEIGHT:
SPEC.:	DIM.:	SERIAL No.:
MFR.: EVERFINE	SUR.:	Shielding Angle:



C Range: 0 - 360DEG
C Interval: 22.5DEG
Test Speed: HIGH
Temperature:25.3°C
Operators:DAMIN
Test Date:2023-10-25

γ Range: 0 - 180DEG
γ Interval: 1.0DEG
Test System:EVERFINE GO-2000A_V1 SYSTEM V2.00.477
Humidity:65.0%
Test Distance:12.020m [K=1.0000]
Remarks:

LED Avg.L Report

Test:U:230.31V I:0.0463A P:9.9664W PF:0.9342 Freq:50.00Hz Lamp Flux:816.226x1 lm		
NAME: R750 W27K2	TYPE:	WEIGHT:
SPEC.:	DIM.:	SERIAL No.:
MFR.: EVERFINE	SUR.:	Shielding Angle:

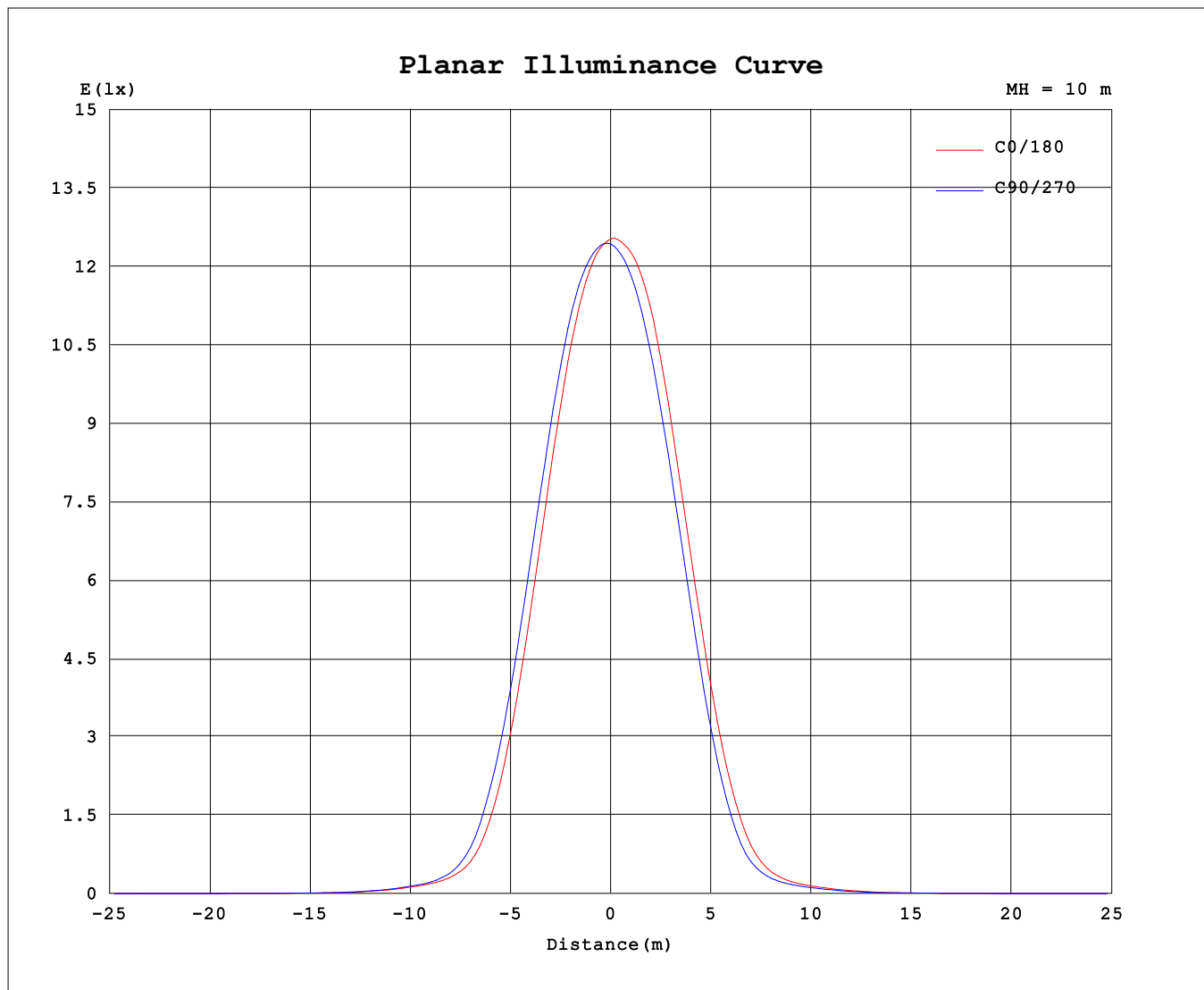
AvgL	cd/m2
L_0~180 (65) av	3881
L_0~180 (75) av	3056
L_0~180 (85) av	1937
L_90~270 (65) av	3850
L_90~270 (75) av	3074
L_90~270 (85) av	2340
L_45 (65) av	3817
L_45 (75) av	3034
L_45 (85) av	1721

Standard: GB/T 29293-2012

C Range: 0 - 360DEG
C Interval: 22.5DEG
Test Speed: HIGH
Temperature:25.3℃
Operators:DAMIN
Test Date:2023-10-25

γ Range: 0 - 180DEG
γ Interval: 1.0DEG
Test System:EVERFINE GO-2000A_V1 SYSTEM V2.00.477
Humidity:65.0%
Test Distance:12.020m [K=1.0000]
Remarks:

Planar Illuminance Curve



C Range: 0 - 360DEG
C Interval: 22.5DEG
Test Speed: HIGH
Temperature: 25.3°C
Operators: DAMIN
Test Date: 2023-10-25

γ Range: 0 - 180DEG
γ Interval: 1.0DEG
Test System: EVERFINE GO-2000A_V1 SYSTEM V2.00.477
Humidity: 65.0%
Test Distance: 12.020m [K=1.0000]
Remarks:

LUMINOUS DISTRIBUTION INTENSITY DATA

Test:U:230.31V I:0.0463A P:9.9664W PF:0.9342 Freq:50.00Hz Lamp Flux:816.226x1 lm																	
NAME: R750 W27K2									TYPE:						WEIGHT:		
SPEC.:									DIM.:						SERIAL No.:		
MFR.: EVERFINE									SUR.:						Shielding Angle:		

Table--1

UNIT: cd

C (DEG) γ (DEG)	0	22.5	45	67.5	90	112.5	135	157.5	180	202.5	225	247.5	270	292.5	315	337.5			
0	1253	1250	1247	1245	1243	1242	1241	1240	1253	1250	1247	1245	1243	1242	1241	1240			
5	1224	1230	1234	1238	1239	1242	1242	1241	1248	1241	1230	1219	1210	1202	1201	1203			
10	1141	1157	1171	1185	1194	1201	1205	1207	1209	1194	1175	1149	1128	1110	1106	1108			
15	988	1011	1035	1060	1077	1094	1100	1101	1092	1072	1047	1014	983	958	948	948			
20	765	794	823	858	882	903	913	915	893	872	847	809	775	742	725	722			
25	508	534	563	602	631	656	667	669	643	619	592	556	522	492	472	468			
30	269	286	310	342	369	392	405	403	377	356	333	305	280	256	245	239			
35	112	121	131	146	161	176	185	186	169	157	142	124	112	101	97.9	98.6			
40	57.1	59.3	62.2	66.4	69.6	73.9	77.6	78.6	73.6	68.3	62.6	57.2	53.5	51.3	51.2	52.2			
45	35.8	37.0	37.8	39.0	40.3	41.8	43.1	43.6	42.2	40.3	37.9	34.8	33.7	33.2	33.2	33.3			
50	18.9	19.3	19.2	20.0	21.2	22.8	23.7	24.4	23.3	22.2	21.1	19.1	18.1	17.5	17.5	17.4			
55	9.58	9.38	9.31	9.45	9.91	10.5	10.8	11.2	10.8	10.4	10.1	9.68	9.31	9.10	9.19	9.29			
60	6.23	6.28	6.39	6.29	6.42	6.71	7.00	7.05	6.82	6.53	6.42	6.60	6.45	6.40	6.17	6.03			
65	4.73	4.78	4.88	4.82	4.89	4.86	5.06	5.02	4.92	4.87	4.70	4.68	4.68	4.61	4.35	4.39			
70	3.24	3.17	3.29	3.28	3.43	3.42	3.51	3.43	3.35	3.40	3.26	3.30	3.15	3.18	3.05	3.11			
75	2.27	2.20	2.33	2.31	2.47	2.42	2.53	2.44	2.38	2.44	2.31	2.35	2.21	2.22	2.07	2.14			
80	1.36	1.23	1.35	1.39	1.52	1.47	1.54	1.44	1.46	1.42	1.32	1.43	1.32	1.32	1.12	1.19			
85	0.50	0.36	0.47	0.55	0.70	0.65	0.59	0.49	0.50	0.48	0.42	0.62	0.50	0.52	0.28	0.37			
90	0.06	0.04	0.05	0.05	0.07	0.05	0.09	0.04	0.04	0.06	0.04	0.06	0.05	0.05	0.03	0.05			
95	0.04	0.07	0.05	0.06	0.05	0.06	0.05	0.06	0.07	0.05	0.07	0.05	0.08	0.04	0.07	0.02			
100	0.04	0.12	0.05	0.11	0.05	0.09	0.05	0.08	0.10	0.05	0.10	0.05	0.11	0.04	0.11	0.02			
105	0.11	0.19	0.11	0.16	0.06	0.14	0.06	0.16	0.16	0.05	0.17	0.06	0.16	0.12	0.19	0.08			
110	0.22	0.31	0.20	0.27	0.16	0.24	0.15	0.23	0.24	0.16	0.24	0.17	0.28	0.19	0.30	0.20			
115	0.51	0.58	0.45	0.52	0.38	0.46	0.34	0.43	0.40	0.31	0.43	0.37	0.49	0.43	0.52	0.43			
120	0.99	1.05	0.89	0.93	0.77	0.82	0.72	0.79	0.71	0.64	0.78	0.73	0.86	0.82	0.94	0.86			
125	1.68	1.71	1.55	1.54	1.36	1.39	1.25	1.33	1.21	1.17	1.30	1.32	1.46	1.44	1.56	1.47			
130	2.57	2.58	2.39	2.37	2.17	2.15	2.02	2.10	1.91	1.91	2.07	2.09	2.27	2.26	2.38	2.29			
135	3.61	3.60	3.41	3.34	3.13	3.10	2.95	3.04	2.83	2.84	3.01	3.04	3.24	3.25	3.38	3.28			
140	4.77	4.73	4.53	4.46	4.22	4.17	4.02	4.10	3.86	3.88	4.09	4.15	4.35	4.38	4.49	4.40			
145	5.94	5.93	5.71	5.65	5.41	5.37	5.20	5.24	4.98	5.01	5.23	5.31	5.54	5.55	5.67	5.56			
150	7.11	7.09	6.87	6.84	6.59	6.56	6.39	6.42	6.18	6.17	6.40	6.48	6.70	6.72	6.81	6.72			
155	8.14	8.13	7.93	7.92	7.70	7.68	7.48	7.55	7.31	7.29	7.49	7.54	7.75	7.73	7.82	7.72			
160	8.91	8.94	8.76	8.77	8.59	8.57	8.40	8.48	8.26	8.23	8.39	8.38	8.55	8.52	8.58	8.51			
165	9.45	9.52	9.33	9.36	9.22	9.24	9.09	9.16	9.01	8.95	9.06	9.02	9.18	9.08	9.17	9.10			
170	9.85	9.92	9.77	9.81	9.72	9.73	9.58	9.66	9.61	9.53	9.64	9.53	9.70	9.55	9.65	9.58			
175	10.1	10.2	10.1	10.2	10.1	10.1	9.91	9.99	10.1	9.95	10.1	9.94	10.1	9.92	10.00	9.89			
180	10.2	10.2	10.2	10.2	10.2	10.2	10.1	10.1	10.2	10.2	10.2	10.2	10.2	10.1	10.1	10.1			

C Range: 0 - 360DEG
C Interval: 22.5DEG
Test Speed: HIGH
Temperature:25.3℃
Operators:DAMIN
Test Date:2023-10-25

γ Range: 0 - 180DEG
γ Interval: 1.0DEG
Test System:EVERFINE GO-2000A_V1 SYSTEM V2.00.477
Humidity:65.0%
Test Distance:12.020m [K=1.0000]
Remarks: