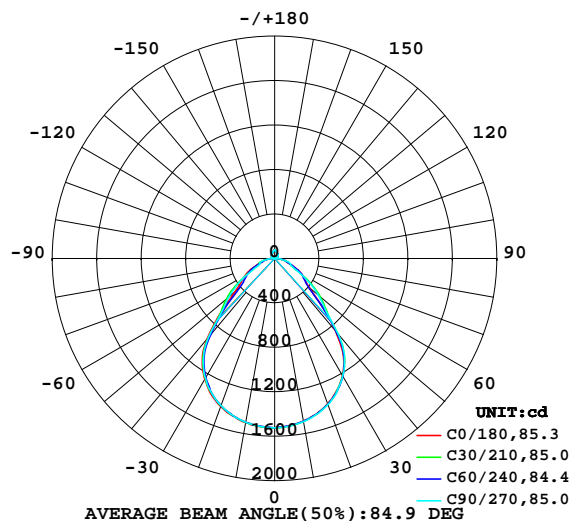


LUMINAIRE PHOTOMETRIC TEST REPORT

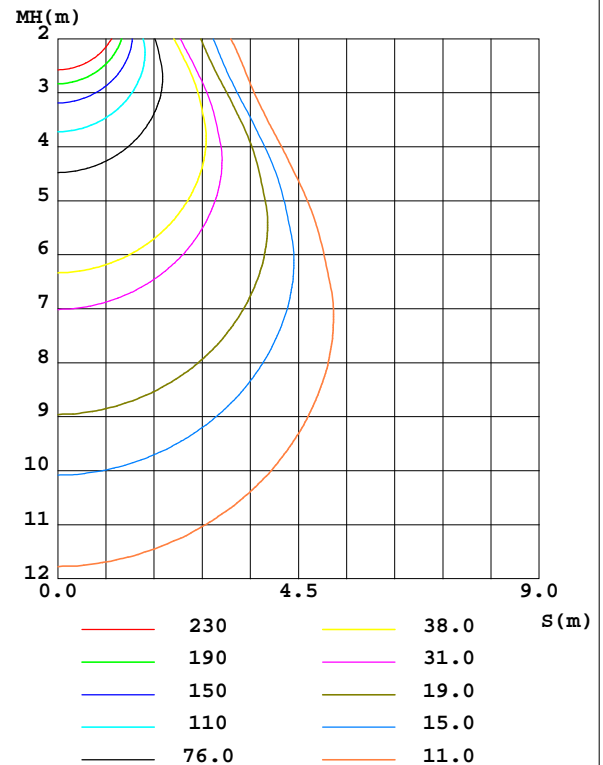
Test:U:229.87V I:0.1427A P:32.124W PF:0.9791 Freq:50.00Hz Lamp Flux:3261.35x1 lm		
NAME: LED346 (30W 4000K) Uplight brighter	TYPE: 调光双色中性白白色	WEIGHT:
SPEC.:	DIM.:	SERIAL No.:
MFR.:	SUR.:	Shielding Angle:

DATA OF LAMP		PHOTOMETRIC DATA				Eff: 101.52 lm/W
MODEL		Imax(cd)	1527	S/MH(C0/180)	1.23	
NOMINAL POWER(W)	30	LOR(%)	100.0	S/MH(C90/270)	1.22	
RATED VOLTAGE(V)	230	TOTAL FLUX(lm)	3261.3	η UP,DN(C0-180)	3.0,46.3	
NOMINAL FLUX(lm)	3261.35	CIE CLASS	DIRECT	η UP,DN(C180-360)	2.9,47.8	
LAMPS INSIDE	1	η up(%)	5.9	CIBSE SHR NOM	1.25	
TEST VOLTAGE(V)	229.5	η down(%)	94.1	CIBSE SHR MAX	1.25	

LUMINOUS INTENSITY DISTRIBUTION DIAGRAM



C0 PLANE ISOLUX DIAGRAM (UNIT:lx)



C Range: 0 - 360DEG
C Interval: 30.0DEG
Test Speed: HIGH
Temperature: 25.3°C
Operators: Mr.Ma
Test Date: 2024 8.12

γ Range: 0 - 180DEG
 γ Interval: 1.0DEG
Test System: EVERFINE GO-2000B_V1 SYSTEM V2.00.459
Humidity: 65.0%
Test Distance: 6.100m [K=1.0000]
Remarks:

ZONAL FLUX DIAGRAM

ZONAL FLUX DIAGRAM:

γ	C0	C45	C90	C135	C180	C225	C270	C315	γ	Φ zone	Φ total	%lum,lamp
10	1487	1489	1490	1492	1501	1497	1497	1495	0- 10	143.9	143.9	4.41,4.41
20	1393	1398	1400	1403	1420	1412	1411	1407	10- 20	411.0	555.0	17,17
30	1219	1226	1225	1230	1258	1244	1248	1240	20- 30	612.4	1167	35.8,35.8
40	852.7	875.5	893.6	891.9	946.1	914.4	929.1	917.3	30- 40	683.9	1851	56.8,56.8
50	405.9	466.9	515.9	482.3	466.0	491.0	539.0	487.6	40- 50	508.7	2360	72.4,72.4
60	281.7	272.8	253.2	276.4	308.8	285.0	279.0	279.8	50- 60	334.6	2695	82.6,82.6
70	146.2	145.3	152.6	151.1	166.7	154.5	142.7	154.7	60- 70	204.0	2899	88.9,88.9
80	72.79	72.83	75.92	77.24	88.34	87.25	87.61	82.45	70- 80	125.7	3024	92.7,92.7
90	1.874	1.901	1.832	1.533	4.958	2.169	2.271	2.179	80- 90	44.07	3068	94.1,94.1
100	8.495	7.988	7.890	7.676	6.473	7.235	7.851	7.495	90-100	4.368	3073	94.2,94.2
110	20.66	20.36	19.40	18.78	17.00	18.22	18.73	19.30	100-110	13.77	3087	94.6,94.6
120	32.82	32.85	32.21	31.70	29.93	31.10	31.50	32.29	110-120	25.39	3112	95.4,95.4
130	41.16	41.31	41.03	40.02	39.00	39.83	40.19	40.93	120-130	32.32	3144	96.4,96.4
140	48.54	48.80	48.60	48.03	47.28	47.95	48.19	48.80	130-140	34.43	3179	97.5,97.5
150	53.78	54.29	54.08	54.22	52.81	53.37	54.43	54.21	140-150	32.15	3211	98.5,98.5
160	57.34	57.87	57.62	57.95	56.57	57.05	58.02	57.61	150-160	25.82	3237	99.2,99.2
170	71.41	71.74	71.62	71.68	69.10	69.97	70.51	70.83	160-170	17.61	3254	99.8,99.8
180	76.56	76.66	77.33	77.68	76.66	76.61	77.29	77.69	170-180	7.031	3261	100,100
DEG	LUMINOUS INTENSITY:cd									UNIT: lm		

Conical surface Flux(90deg): 2134.8 lm

%lum = 65.5%

%lamp = 65.5%

Conical surface Flux(130deg): 2810.3 lm

%lum = 86.2%

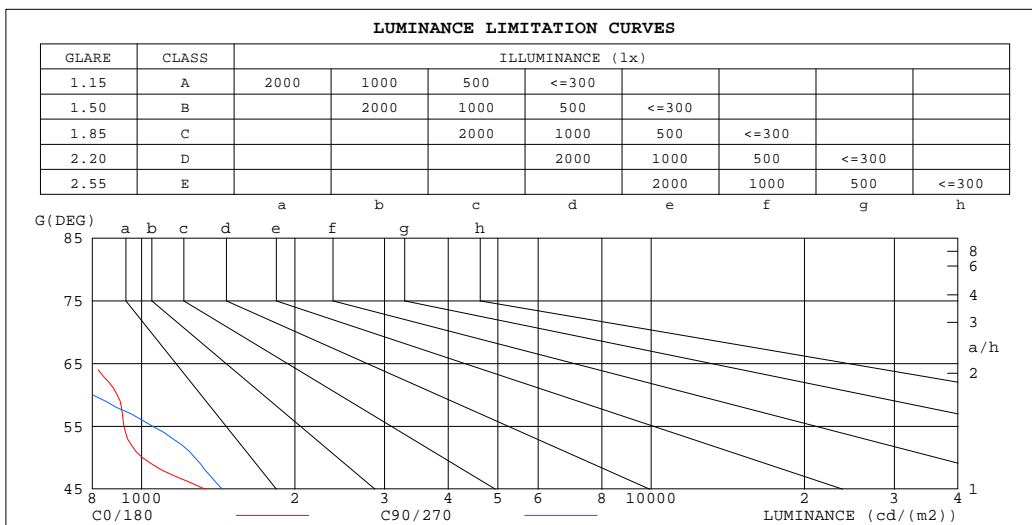
%lamp = 86.2%

C Range: 0 - 360DEG
C Interval: 30.0DEG
Test Speed: HIGH
Temperature:25.3℃
Operators:Mr.Ma
Test Date: 2024 8.12

γ Range: 0 - 180DEG
 γ Interval: 1.0DEG
Test System:EVERFINE GO-2000B_V1 SYSTEM V2.00.459
Humidity:65.0%
Test Distance:6.100m [K=1.0000]
Remarks:

LUMINANCE LIMITATION CURVES

Test:U:229.87V I:0.1427A P:32.124W PF:0.9791 Freq:50.00Hz Lamp Flux:3261.35x1 lm		
NAME: LED346 (30W 4000K) Uplight brighter	TYPE: 调光双色中性白白色	WEIGHT:
SPEC.:	DIM.:	SERIAL No.:
MFR.:	SUR.:	Shielding Angle:



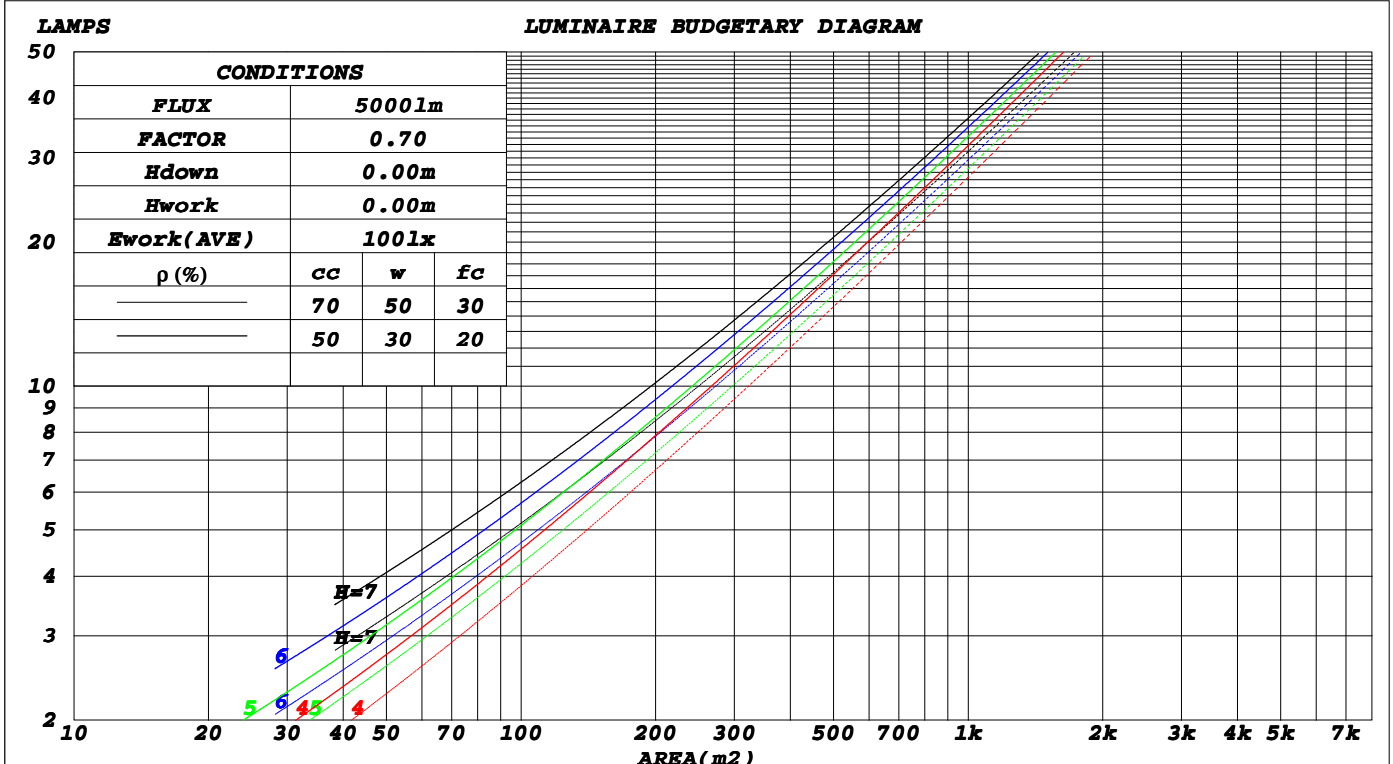
C Range: 0 - 360DEG
C Interval: 30.0DEG
Test Speed: HIGH
Temperature: 25.3°C
Operators: Mr.Ma
Test Date: 2024 8.12

γ Range: 0 - 180DEG
γ Interval: 1.0DEG
Test System: EVERFINE GO-2000B_V1 SYSTEM V2.00.459
Humidity: 65.0%
Test Distance: 6.100m [K=1.0000]
Remarks:

CU AND LUMINAIRE BUDGETARY ESTIMATE DIAGRAM

Test:U:229.87V I:0.1427A P:32.124W PF:0.9791 Freq:50.00Hz Lamp Flux:3261.35x1 lm		
NAME: LED346 (30W 4000K) Uplight brighter	TYPE: 调光双色中性白白色	WEIGHT:
SPEC.:	DIM.:	SERIAL No.:
MFR.:	SUR.:	Shielding Angle:

ρ_{cc}	80%			70%			50%			30%			10%			0
ρ_w	50%	30%	10%	50%	30%	10%	50%	30%	10%	50%	30%	10%	50%	30%	10%	0
ρ_{fc}	20%			20%			20%			20%			20%			0
RCR	RCR:Room Cavity Ratio Coefficients of Utilization(CU)															
0.0	1.18	1.18	1.18	1.14	1.14	1.14	1.08	1.08	1.08	1.02	1.02	1.02	.97	.97	.97	.94
1.0	1.05	1.01	.98	1.02	.99	.96	.97	.94	.92	.92	.90	.88	.87	.86	.84	.82
2.0	.93	.88	.83	.91	.86	.81	.87	.82	.78	.83	.79	.76	.79	.76	.73	.71
3.0	.84	.77	.71	.82	.75	.70	.78	.73	.68	.75	.70	.66	.71	.68	.64	.62
4.0	.75	.68	.62	.74	.67	.61	.71	.64	.60	.68	.62	.58	.65	.61	.57	.55
5.0	.68	.60	.54	.67	.59	.54	.64	.58	.53	.62	.56	.52	.59	.55	.51	.49
6.0	.62	.54	.48	.61	.53	.48	.59	.52	.47	.57	.51	.46	.55	.49	.45	.44
7.0	.57	.49	.43	.56	.48	.43	.54	.47	.42	.52	.46	.42	.50	.45	.41	.39
8.0	.52	.45	.39	.51	.44	.39	.50	.43	.38	.48	.42	.38	.47	.41	.37	.36
9.0	.48	.41	.36	.48	.40	.35	.46	.40	.35	.45	.39	.35	.43	.38	.34	.32
10.0	.45	.38	.33	.44	.37	.32	.43	.36	.32	.42	.36	.32	.40	.35	.31	.30



C Range: 0 - 360DEG
C Interval: 30.0DEG
Test Speed: HIGH
Temperature: 25.3°C
Operators: Mr.Ma
Test Date: 2024 8.12

γ Range: 0 - 180DEG
 γ Interval: 1.0DEG
 γ Test System: EVERFINE GO-2000B_V1 SYSTEM V2.00.459
Humidity: 65.0%
Test Distance: 6.100m [K=1.0000]
Remarks:

WEC AND CCEC

Test:U:229.87V I:0.1427A P:32.124W PF:0.9791 Freq:50.00Hz Lamp Flux:3261.35x1 lm		
NAME: LED346 (30W 4000K) Uplight brighter	TYPE: 调光双色中性白白色	WEIGHT:
SPEC.:	DIM.:	SERIAL No.:
MFR.:	SUR.:	Shielding Angle:

ρ_{cc}	80%			70%			50%			30%			10%			0														
ρ_w	50%	30%	10%	50%	30%	10%	50%	30%	10%	50%	30%	10%	50%	30%	10%	0														
ρ_{fc}	20%			20%			20%			20%			20%			0														
RCR	RCR:Room Cavity Ratio															Wall Exitance Coefficients(WEC)														
0.0																														
1.0	.264	.150	.048	.255	.146	.046	.239	.137	.044	.224	.129	.041	.210	.122	.039															
2.0	.249	.137	.042	.242	.133	.041	.227	.126	.039	.214	.120	.038	.202	.114	.036															
3.0	.233	.124	.037	.226	.121	.036	.214	.116	.035	.202	.111	.034	.191	.106	.033															
4.0	.218	.113	.033	.212	.111	.033	.200	.106	.032	.190	.102	.031	.180	.098	.030															
5.0	.203	.104	.030	.198	.102	.030	.188	.098	.029	.178	.094	.028	.169	.090	.027															
6.0	.190	.095	.027	.186	.094	.027	.176	.090	.026	.168	.087	.026	.160	.084	.025															
7.0	.179	.088	.025	.174	.087	.025	.166	.084	.024	.158	.081	.024	.151	.078	.023															
8.0	.168	.082	.023	.164	.081	.023	.157	.078	.022	.150	.076	.022	.143	.073	.021															
9.0	.159	.077	.021	.155	.076	.021	.148	.073	.021	.142	.071	.020	.136	.069	.020															
10.0	.150	.072	.020	.147	.071	.020	.141	.069	.019	.135	.067	.019	.129	.065	.019															

ρ_{cc}	80%			70%			50%			30%			10%			0
ρ_w	50%	30%	10%	50%	30%	10%	50%	30%	10%	50%	30%	10%	50%	30%	10%	0
ρ_{fc}	20%			20%			20%			20%			20%			0
RCR	RCR:Room Cavity Ratio Ceiling Cavity Exitance Coefficients(CCEC)															
0.0	.236	.236	.236	.201	.201	.201	.137	.137	.137	.079	.079	.079	.025	.025	.025	
1.0	.223	.202	.183	.190	.173	.158	.130	.119	.109	.075	.069	.063	.024	.022	.021	
2.0	.212	.178	.149	.182	.153	.129	.125	.106	.090	.072	.062	.053	.023	.020	.017	
3.0	.203	.160	.125	.174	.138	.109	.120	.096	.076	.069	.056	.045	.022	.018	.015	
4.0	.195	.146	.109	.168	.127	.095	.115	.088	.067	.067	.052	.040	.021	.017	.013	
5.0	.188	.136	.098	.161	.118	.085	.111	.082	.060	.064	.048	.036	.021	.016	.012	
6.0	.181	.127	.089	.155	.110	.077	.107	.077	.055	.062	.045	.033	.020	.015	.011	
7.0	.174	.120	.083	.150	.104	.072	.104	.073	.051	.060	.043	.030	.019	.014	.010	
8.0	.169	.115	.078	.145	.099	.068	.100	.070	.048	.058	.041	.029	.019	.013	.009	
9.0	.163	.110	.074	.140	.095	.064	.097	.067	.046	.057	.040	.027	.018	.013	.009	
10.0	.158	.106	.071	.136	.092	.062	.094	.064	.044	.055	.038	.026	.018	.013	.009	

C Range: 0 - 360DEG
C Interval: 30.0DEG
Test Speed: HIGH
Temperature: 25.3℃
Operators: Mr.Ma
Test Date: 2024 8.12

γ Range: 0 - 180DEG
 γ Interval: 1.0DEG
Test System: EVERFINE GO-2000B_V1 SYSTEM V2.00.459
Humidity: 65.0%
Test Distance: 6.100m [K=1.0000]
Remarks:

UGR(Unified Glare Rating) Table

Test:U:229.87V I:0.1427A P:32.124W PF:0.9791 Freq:50.00Hz Lamp Flux:3261.35x1 lm										
NAME: LED346 (30W 4000K) Uplight brighter					TYPE: 调光双色中性白白色			WEIGHT:		
SPEC.:					DIM.:			SERIAL No.:		
MFR.:					SUR.:			Shielding Angle:		
ceiling/cavity	0.7	0.7	0.5	0.5	0.3	0.7	0.7	0.5	0.5	0.3
walls	0.5	0.3	0.5	0.3	0.3	0.5	0.3	0.5	0.3	0.3
working plane	0.2	0.2	0.2	0.2	0.2	0.2	0.2	0.2	0.2	0.2
Room dimensions	Viewed crosswise					Viewed endwise				
x = 2H y = 2H	7.6	8.9	7.9	9.2	9.5	7.4	8.7	7.8	9.0	9.3
3H	8.4	9.5	8.7	9.9	10.2	8.2	9.4	8.6	9.7	10.1
4H	8.8	9.9	9.2	10.2	10.6	8.7	9.8	9.1	10.2	10.6
6H	9.1	10.2	9.6	10.5	10.9	9.2	10.2	9.6	10.6	10.9
8H	9.3	10.3	9.7	10.6	11.0	9.3	10.3	9.7	10.7	11.1
12H	9.3	10.3	9.8	10.7	11.1	9.4	10.4	9.9	10.8	11.2
4H 2H	7.8	8.9	8.2	9.3	9.6	7.7	8.8	8.1	9.2	9.5
3H	8.8	9.8	9.2	10.2	10.6	8.7	9.7	9.2	10.1	10.5
4H	9.4	10.3	9.9	10.7	11.1	9.4	10.3	9.8	10.7	11.1
6H	9.9	10.7	10.4	11.1	11.6	10.0	10.7	10.4	11.2	11.7
8H	10.1	10.8	10.6	11.3	11.8	10.2	10.9	10.7	11.4	11.9
12H	10.2	10.9	10.7	11.4	11.9	10.4	11.0	10.9	11.5	12.0
8H 4H	9.6	10.3	10.1	10.8	11.3	9.6	10.3	10.1	10.8	11.3
6H	10.3	10.8	10.8	11.3	11.9	10.3	10.9	10.9	11.4	12.0
8H	10.5	11.0	11.1	11.6	12.1	10.6	11.2	11.2	11.7	12.3
12H	10.8	11.2	11.3	11.7	12.3	10.9	11.4	11.5	11.9	12.5
12H 4H	9.6	10.3	10.1	10.7	11.3	9.6	10.2	10.1	10.7	11.2
6H	10.3	10.8	10.9	11.4	11.9	10.4	10.9	10.9	11.4	12.0
8H	10.6	11.1	11.2	11.6	12.2	10.7	11.2	11.3	11.7	12.3
Variations with the observer position at spacings(CIE Pub.117):										
S = 1.0H	+ 0.4 / - 0.5					+ 0.4 / - 0.4				
1.5H	+ 0.4 / - 0.6					+ 0.5 / - 0.3				
2.0H	+ 0.6 / - 0.8					+ 0.6 / - 0.6				

CIE Pub.117, 3261 lm Total Lamp Luminous Flux Correct ($8\log(F/F_0) = 4.1$)
 Area: 0.63 m2

C Range: 0 - 360DEG
 C Interval: 30.0DEG
 Test Speed: HIGH
 Temperature:25.3℃
 Operators:Mr.Ma
 Test Date: 2024 8.12

γ Range: 0 - 180DEG
 γ Interval: 1.0DEG
 Test System:EVERFINE GO-2000B_V1 SYSTEM V2.00.459
 Humidity:65.0%
 Test Distance:6.100m [K=1.0000]
 Remarks:

UTILIZATION FACTORS TABLE

Test:U:229.87V I:0.1427A P:32.124W PF:0.9791 Freq:50.00Hz Lamp Flux:3261.35x1 lm		
NAME: LED346 (30W 4000K) Uplight brighter	TYPE: 调光双色中性白白色	WEIGHT:
SPEC.:	DIM.:	SERIAL No.:
MFR.:	SUR.:	Shielding Angle:

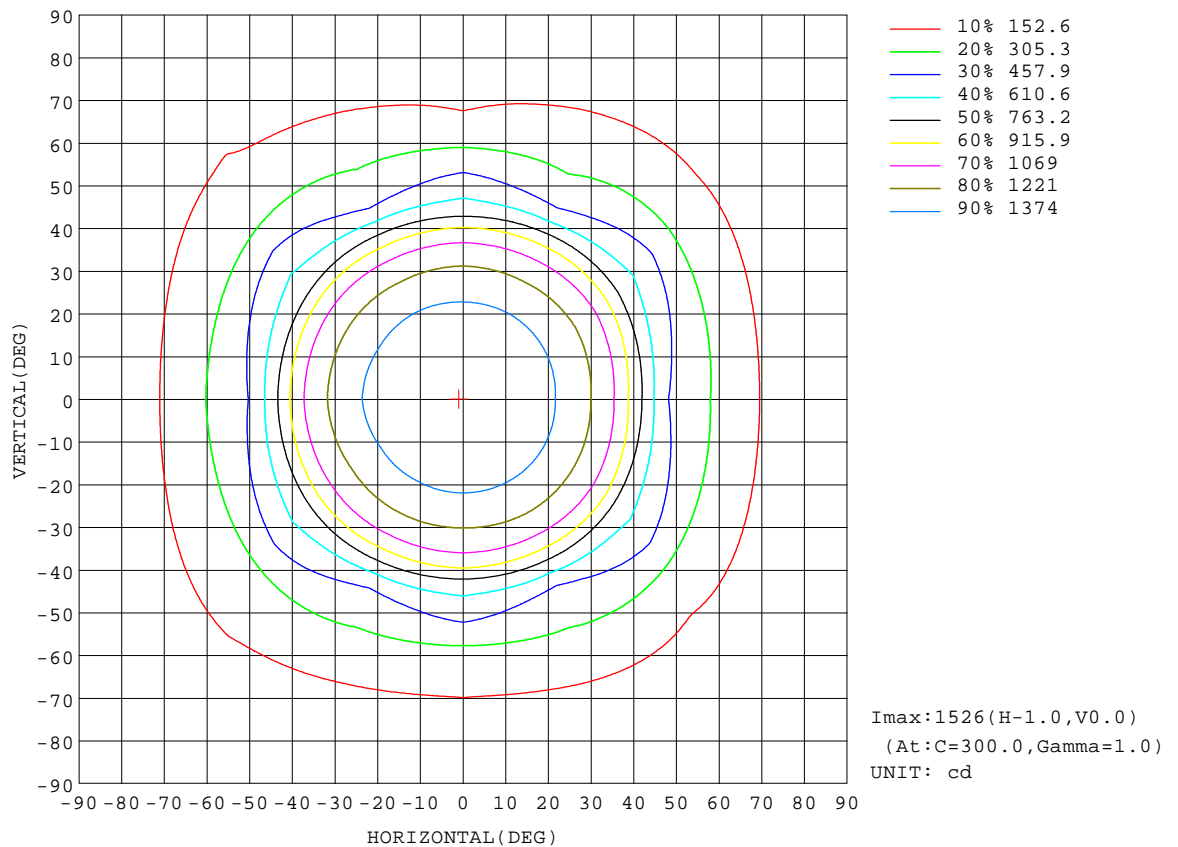
REFLECTANCE										
Ceiling	0.8	0.8	0.8	0.7	0.7	0.7	0.5	0.5	0.5	0
Walls	0.7	0.5	0.3	0.7	0.5	0.3	0.7	0.5	0.3	0
Working plane	0.2	0.2	0.2	0.2	0.2	0.2	0.2	0.2	0.2	0
ROOM INDEX	UTILIZATION FACTORS(PERCENT) $k(RI) \times RCR = 5$									
$k = 0.60$	65	55	49	64	54	49	62	54	48	42
0.80	74	64	58	73	64	58	71	63	57	51
1.00	82	72	66	80	72	66	78	72	65	58
1.25	88	79	73	86	78	73	83	76	71	64
1.50	92	84	78	90	83	77	87	81	76	68
2.00	98	91	85	96	89	84	92	86	82	74
2.50	101	94	89	99	93	88	94	89	85	77
3.00	104	98	93	101	96	92	96	92	89	79
4.00	107	102	98	104	100	96	99	96	93	83
5.00	109	105	101	106	102	99	101	98	95	85
ROOM INDEX	UF(total)									Direct
According to DIN EN 13032-2 2004			Suspended					SHRNM = 1.25		

C Range: 0 - 360DEG
C Interval: 30.0DEG
Test Speed: HIGH
Temperature: 25.3℃
Operators: Mr.Ma
Test Date: 2024 8.12

γ Range: 0 - 180DEG
γ Interval: 1.0DEG
Test System: EVERFINE GO-2000B_V1 SYSTEM V2.00.459
Humidity: 65.0%
Test Distance: 6.100m [K=1.0000]
Remarks:

ISOCANDELA DIAGRAM

Test:U:229.87V I:0.1427A P:32.124W PF:0.9791 Freq:50.00Hz Lamp Flux:3261.35x1 lm		
NAME: LED346 (30W 4000K) Uplight brighter	TYPE: 调光双色中性白白色	WEIGHT:
SPEC.:	DIM.:	SERIAL No.:
MFR.:	SUR.:	Shielding Angle:



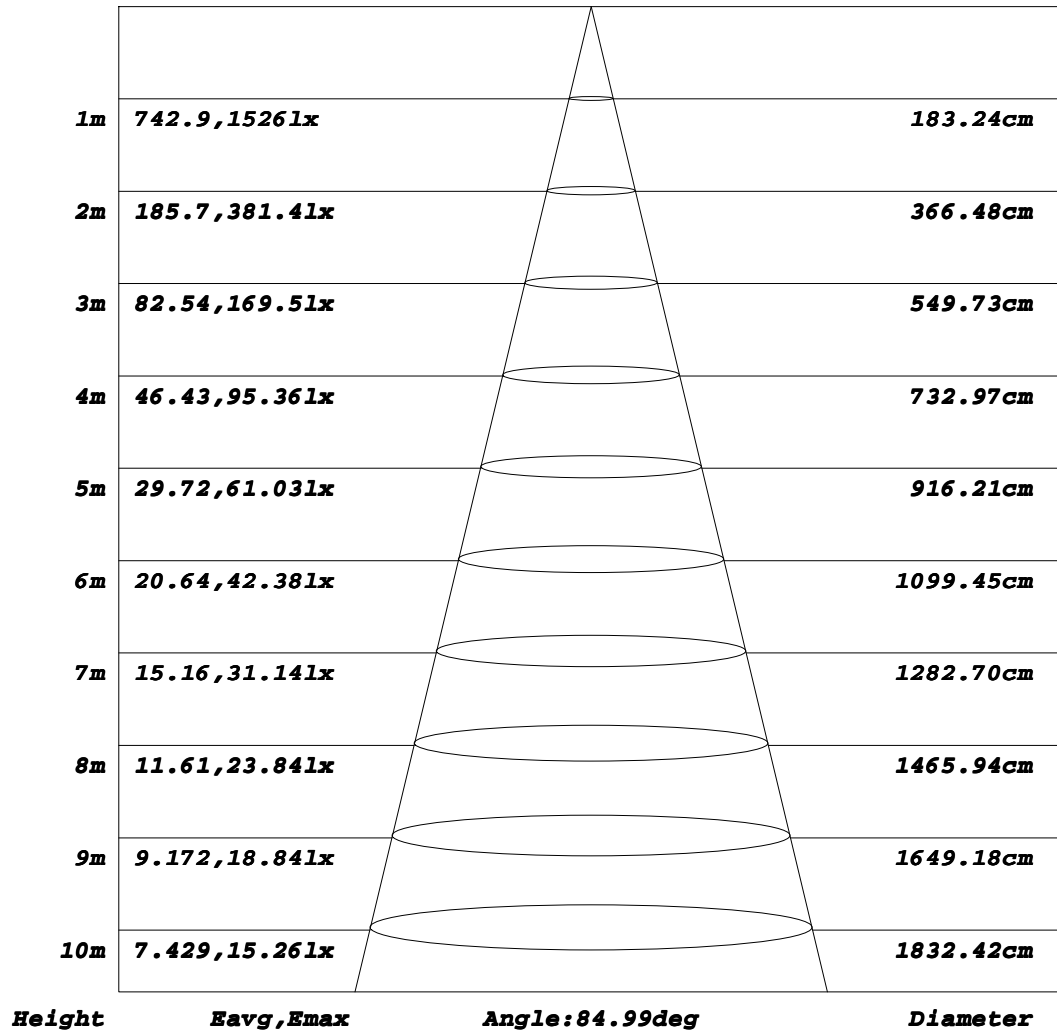
C Range: 0 - 360DEG
C Interval: 30.0DEG
Test Speed: HIGH
Temperature: 25.3°C
Operators: Mr.Ma
Test Date: 2024 8.12

γ Range: 0 - 180DEG
γ Interval: 1.0DEG
Test System: EVERFINE GO-2000B_V1 SYSTEM V2.00.459
Humidity: 65.0%
Test Distance: 6.100m [K=1.0000]
Remarks:

AAI Figure

Test:U:229.87V I:0.1427A P:32.124W PF:0.9791 Freq:50.00Hz Lamp Flux:3261.35x1 lm		
NAME: LED346 (30W 4000K) Uplight brighter	TYPE: 调光双色中性白白色	WEIGHT:
SPEC.:	DIM.:	SERIAL No.:
MFR.:	SUR.:	Shielding Angle:

Flux out:2029 lm



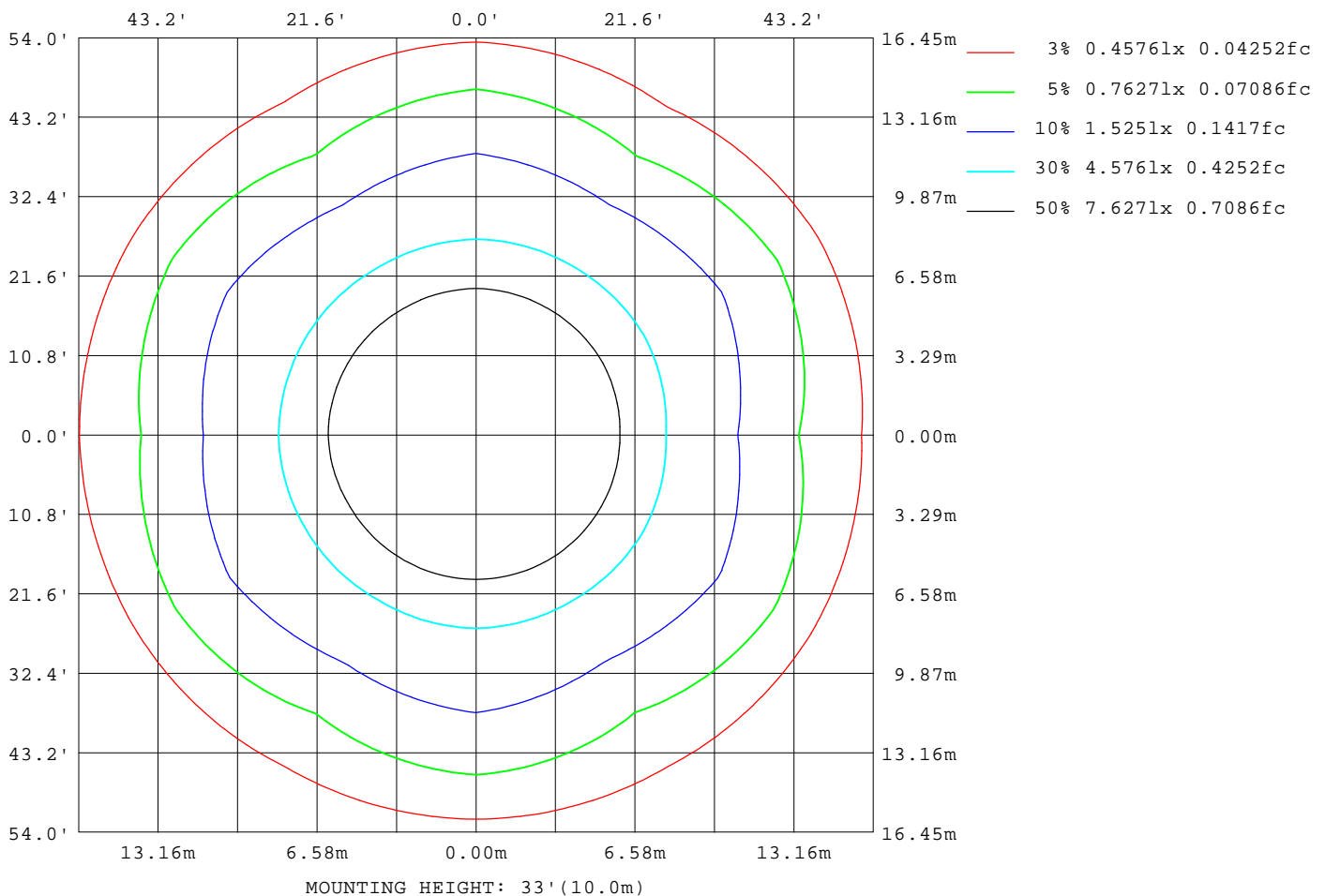
Note: The Curves indicate the illuminated area and the average illumination when the luminaire is at different distance.

C Range: 0 - 360DEG
C Interval: 30.0DEG
Test Speed: HIGH
Temperature: 25.3°C
Operators: Mr.Ma
Test Date: 2024 8.12

γ Range: 0 - 180DEG
γ Interval: 1.0DEG
Test System: EVERFINE GO-2000B_V1 SYSTEM V2.00.459
Humidity: 65.0%
Test Distance: 6.100m [K=1.0000]
Remarks:

ISOLUX DIAGRAM

Test:U:229.87V I:0.1427A P:32.124W PF:0.9791 Freq:50.00Hz Lamp Flux:3261.35x1 lm		
NAME: LED346 (30W 4000K) Uplight brighter	TYPE: 调光双色中性白白色	WEIGHT:
SPEC.:	DIM.:	SERIAL No.:
MFR.:	SUR.:	Shielding Angle:



C Range: 0 - 360DEG
C Interval: 30.0DEG
Test Speed: HIGH
Temperature: 25.3°C
Operators: Mr.Ma
Test Date: 2024 8.12

γ Range: 0 - 180DEG
γ Interval: 1.0DEG
Test System: EVERFINE GO-2000B_V1 SYSTEM V2.00.459
Humidity: 65.0%
Test Distance: 6.100m [K=1.0000]
Remarks:

LED Avg.L Report

Test:U:229.87V I:0.1427A P:32.124W PF:0.9791 Freq:50.00Hz Lamp Flux:3261.35x1 lm		
NAME: LED346 (30W 4000K) Uplight brighter	TYPE: 调光双色中性白白色	WEIGHT:
SPEC.:	DIM.:	SERIAL No.:
MFR.:	SUR.:	Shielding Angle:

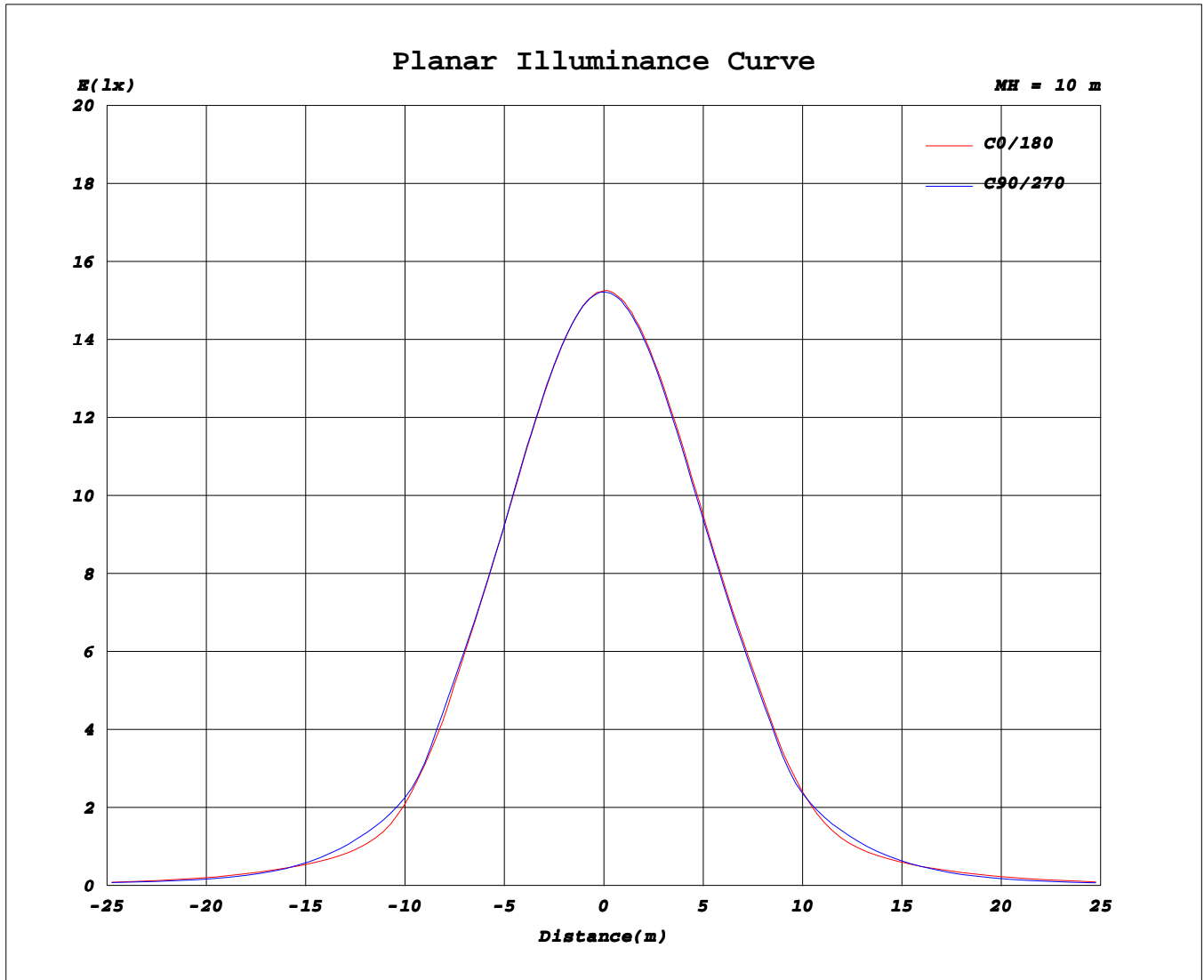
AvgL	cd/m2
L_0~180(65)av	847
L_0~180(75)av	709
L_0~180(85)av	737
L_90~270(65)av	672
L_90~270(75)av	797
L_90~270(85)av	800
L_45(65)av	757
L_45(75)av	738
L_45(85)av	761

Standard: GB/T 29293-2012

C Range: 0 - 360DEG
C Interval: 30.0DEG
Test Speed: HIGH
Temperature: 25.3℃
Operators: Mr.Ma
Test Date: 2024 8.12

γ Range: 0 - 180DEG
γ Interval: 1.0DEG
Test System: EVERFINE GO-2000B_V1 SYSTEM V2.00.459
Humidity: 65.0%
Test Distance: 6.100m [K=1.0000]
Remarks:

Planar Illuminance Curve



C Range: 0 - 360DEG
C Interval: 30.0DEG
Test Speed: HIGH
Temperature: 25.3°C
Operators: Mr.Ma
Test Date: 2024 8.12

γ Range: 0 - 180DEG
γ Interval: 1.0DEG
Test System: EVERFINE GO-2000B_V1 SYSTEM V2.00.459
Humidity: 65.0%
Test Distance: 6.100m [K=1.0000]
Remarks:

LUMINOUS DISTRIBUTION INTENSITY DATA

Test:U:229.87V I:0.1427A P:32.124W PF:0.9791 Freq:50.00Hz Lamp Flux:3261.35x1 lm		
NAME: LED346 (30W 4000K) Uplight brighter	TYPE: 调光双色中性白白色	WEIGHT:
SPEC.:	DIM.:	SERIAL No.:
MFR.:	SUR.:	Shielding Angle:

Table--1

UNIT: cd

C(°) \ γ (°)	0	30	60	90	120	150	180	210	240	270	300	330							
0	1523	1523	1523	1523	1523	1523	1523	1523	1523	1523	1523	1523							
5	1512	1514	1513	1514	1514	1516	1519	1517	1516	1518	1517	1515							
10	1487	1489	1489	1490	1491	1493	1501	1497	1497	1497	1497	1492							
15	1448	1451	1452	1454	1454	1457	1467	1461	1463	1463	1462	1456							
20	1393	1397	1399	1400	1401	1404	1420	1410	1413	1411	1411	1404							
25	1318	1321	1325	1325	1326	1328	1352	1340	1341	1340	1340	1334							
30	1219	1225	1227	1225	1228	1233	1258	1249	1239	1248	1239	1242							
35	1080	1100	1093	1098	1094	1111	1139	1125	1111	1122	1112	1118							
40	853	887	864	894	870	914	946	930	899	929	914	921							
45	592	660	597	642	605	683	680	688	637	670	634	690							
50	406	538	396	516	408	557	466	566	416	539	421	554							
55	333	405	325	381	328	415	368	433	331	408	325	420							
60	282	266	280	253	278	275	309	287	283	279	275	285							
65	213	176	211	177	211	185	238	183	227	181	227	192							
70	146	146	145	153	146	156	167	155	154	143	160	149							
75	111	121	112	126	112	133	120	137	112	134	109	128							
80	72.8	69.4	76.3	75.9	75.3	79.2	88.3	88.9	85.6	87.6	84.0	80.9							
85	32.2	36.8	37.1	38.7	34.6	43.4	48.7	48.7	45.3	49.1	45.1	43.6							
90	1.87	1.88	1.92	1.83	1.62	1.44	4.96	2.17	2.17	2.27	2.35	2.00							
95	4.14	3.92	3.98	3.97	3.75	3.37	2.77	3.22	3.46	3.81	3.60	3.78							
100	8.49	7.96	8.02	7.89	7.96	7.39	6.47	7.08	7.39	7.85	7.38	7.61							
105	14.1	13.8	13.6	13.0	13.2	12.3	11.3	12.2	12.6	12.8	12.9	13.1							
110	20.7	20.6	20.1	19.4	19.3	18.3	17.0	18.0	18.4	18.7	19.1	19.5							
115	27.2	27.5	26.8	26.2	26.0	25.2	23.4	24.5	24.9	25.1	25.6	26.2							
120	32.8	33.2	32.5	32.2	32.1	31.3	29.9	31.0	31.2	31.5	32.0	32.6							
125	36.6	37.0	36.7	36.5	36.5	35.1	34.5	35.3	35.5	35.8	36.3	36.7							
130	41.2	41.4	41.2	41.0	40.5	39.5	39.0	39.5	40.1	40.2	40.8	41.1							
135	45.2	45.5	45.4	45.2	44.7	43.9	43.4	43.7	44.6	44.4	45.0	45.2							
140	48.5	48.8	48.8	48.6	48.6	47.5	47.3	47.6	48.3	48.2	48.8	48.8							
145	51.4	51.7	51.8	51.5	51.8	51.0	50.3	50.6	51.2	51.4	51.8	51.9							
150	53.8	54.2	54.3	54.1	54.5	53.9	52.8	53.2	53.6	54.4	54.2	54.2							
155	55.8	56.4	56.3	56.0	56.5	56.1	54.9	55.2	55.6	56.5	56.2	56.0							
160	57.3	58.0	57.8	57.6	58.1	57.8	56.6	56.8	57.3	58.0	57.7	57.5							
165	63.1	63.4	63.3	63.2	63.1	62.3	59.2	59.9	60.0	61.2	60.8	61.4							
170	71.4	71.8	71.7	71.6	71.7	71.7	69.1	70.0	69.9	70.5	70.5	71.2							
175	75.0	75.4	75.1	75.5	75.8	75.9	73.9	74.1	74.2	74.6	74.9	75.3							
180	76.6	76.9	76.4	77.3	77.6	77.8	76.7	76.8	76.4	77.3	77.6	77.7							

C Range: 0 - 360DEG

C Interval: 30.0DEG

Test Speed: HIGH

Temperature: 25.3℃

Operators: Mr.Ma

Test Date: 2024 8.12

γ Range: 0 - 180DEG

γ Interval: 1.0DEG

Test System: EVERFINE GO-2000B_V1 SYSTEM V2.00.459

Humidity: 65.0%

Test Distance: 6.100m [K=1.0000]

Remarks: